

Business Interoperability Specification



OpenPEPPOL AISBL



**Post Award Coordinating
Community**

ICT - Models

BIS 30A – DespatchAdvice



**Version: 1.00
Status: In use**



This PEPPOL Business Interoperability Specification (BIS) document is based on the CEN CWA prepared by the BII workshop specified in the Introduction below. The original CEN CWA document contains the following copyright notice which still applies:

© 2012 CEN All rights of exploitation in any form and by any means reserved worldwide for CEN national Members.

The CEN CWA documents and profiles prepared by the BII workshop are not specific to a business area. Subject to agreement with CEN, customizations have been made by PEPPOL to establish the PEPPOL BIS, detailing and adding further guidance on the use of BII profiles.

OpenPEPPOL AISBL holds the copyright in the customizations made to the original document. The customizations appear from the corresponding conformance statement which is attached to this document. For the purpose of national implementations, customizations covered by the conformance statement may be further refined and detailed by PEPPOL Authorities and/or other entities authorized by OpenPEPPOL AISBL, provided that interoperability with PEPPOL BIS is ensured.

This PEPPOL BIS document may not be modified, re-distributed, sold or repackaged in any other way without the prior consent of CEN and/or OpenPEPPOL AISBL.

Table of Contents

1	INTRODUCTION TO OPENPEPPOL AND BIS	5
1.1	BACKGROUND AND OBJECTIVE	5
1.2	AUDIENCE	5
2	REFERENCES	6
3	DOCUMENT HISTORY	7
3.1	REVISION HISTORY	7
3.2	CONTRIBUTORS	7
4	PRINCIPLES AND PREREQUISITES	8
4.1	DESPATCH ADVICE MESSAGE IN GENERAL	8
4.2	PARTIES AND ROLES	8
4.3	OTHER IMPORTANT CONCEPTS	9
4.4	DESPATCH ADVICE TRANSACTION BUSINESS REQUIREMENTS	10
5	PROCESS AND TYPICAL SCENARIOS	12
5.1	LEGEND FOR BPMN DIAGRAMS	12
5.2	SIMPLE PROCESS – TWO PARTIES INVOLVED	13
5.3	MORE ADVANCED PROCESS – USE OF DESPATCH PARTY	14
5.4	TYPICAL USE CASES	15
5.4.1	<i>Use case 1 - Simple Despatch</i>	15
5.4.2	<i>Use case 2 - Simple Despatch with outstanding quantity</i>	16
5.4.3	<i>Use case 3 - Despatch with Logistic units using GS1 Keys</i>	16
5.4.4	<i>Use case 4 - Despatch with weight and/or volume based items (ie vegetables, meat)</i>	20
5.4.5	<i>Use case 5 – Advanced Despatch demonstrating most of the business terms</i>	21
6	DESCRIPTION OF SELECTED PARTS OF THE DESPATCH ADVICE MESSAGE	25
6.1	PARTIES	25
6.1.1	<i>DespatchSupplier party (Despatch party)</i>	25
6.1.2	<i>DeliveryCustomerParty (Consignee)</i>	25
6.1.3	<i>BuyerCustomerParty (Customer)</i>	26
6.1.4	<i>SellerSupplierParty (Supplier)</i>	26
6.1.5	<i>OriginatorCustomerParty (Originating party)</i>	26
6.1.6	<i>Using Swedish organization number as PartyIdentification</i>	27
6.1.7	<i>Using Norwegian organization number as PartyIdentification</i>	27
6.1.8	<i>Using Danish organization number as PartyIdentification</i>	27
6.2	ORDER REFERENCE	28
6.3	SHIPMENT	28
6.3.1	<i>Shipment ID</i>	28
6.4	DESPATCH LINE	29
6.4.1	<i>Item description and identification</i>	29
6.4.2	<i>Outstanding quantity</i>	29
6.4.3	<i>Hazardous item</i>	30
6.4.4	<i>Serial numbers</i>	30
6.4.5	<i>Batch/Lot numbers, Expiry Date and Best Before Date</i>	30
6.4.6	<i>Transport handling unit</i>	31
7	DESPATCH ADVICE BUSINESS RULES	32
7.1	BUSINESS RULES	32
8	MESSAGE STRUCTURE AND INFORMATION CONTENT	33
8.1	TECHNICAL PARAMETERS	33
8.1.1	<i>UBL Version ID</i>	33
8.1.2	<i>Profile ID</i>	33
8.1.3	<i>Customization ID</i>	33
8.1.4	<i>Namespaces</i>	33

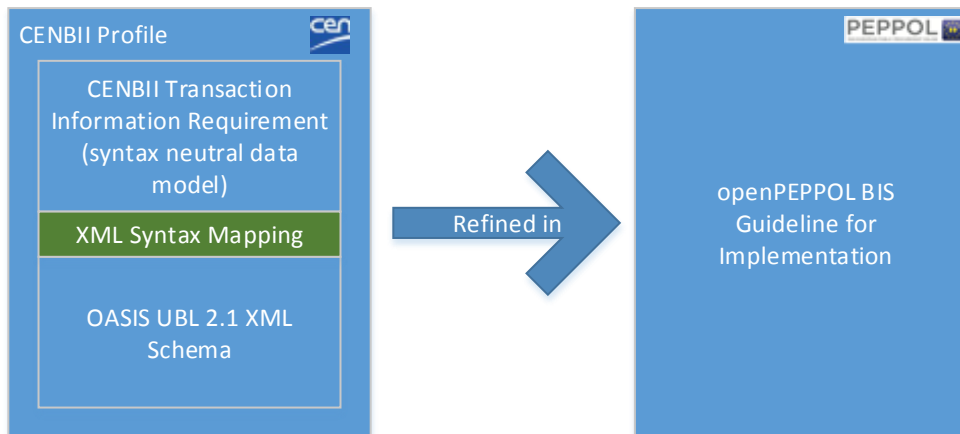
8.2 XML SCHEMA GUIDELINE AND INFORMATION CONTENT 33



1 Introduction to openPEPPOL and BIS

This BIS is a result of work within PEPPOL project and is published as part of PEPPOL specifications.

This PEPPOL BIS provides a set of specifications for implementing a PEPPOL business process. The document is concerned with clarifying requirements for ensuring interoperability of pan-European Public eProcurement and provides guidelines for supporting these requirements and how to implement them. This PEPPOL BIS is based on the CEN WS/BII2 Profile “Profile BII30 Dispatch Only”. A conformance statement is included in this BIS, see annex B.



1.1 Background and objective

The PEPPOL BIS (Business Interoperability Specification) provides a set of specifications for implementing PEPPOL business documents. The specifications enable any company to issue electronic documents that fulfill legal and business processing requirement within the European Union and the EEA. It supports a subset of information that is used by most industries and enables users to issue documents (invoices, orders, despatch advices, etc...) that are valid for cross border trade within the European Union and the EEA.

The purpose of this document is to describe a common format for the despatch advice message in the European market, and to facilitate an efficient implementation and increased use of electronic collaboration regarding the fulfillment process based on this format.

1.2 Audience

The audience for this document is organizations wishing to be PEPPOL enabled for exchanging electronic despatch advices, and/or their ICT-suppliers. These organizations may be:

- ▶ Service providers
- ▶ Contracting Authorities
- ▶ Economic Operators
- ▶ Software Developers

More specifically it is addressed towards the following roles:

- ▶ ICT Architects
- ▶ ICT Developers
- ▶ Business Experts

The development of this BIS was initiated as a joint project between DIFI (NO), DIGST (DK) and SFTI (SE). However, the project group decided that the Post-Award Community within openPEPPOL would be a better platform which also would give more stakeholders possibility to participate. Members of the project team have

searched advice from, and interviewed, several small and large companies using electronic despatch advices today. Particularly with the aim of identifying the most important and commonly used scenarios.

2 References

- [PEPPOL] <http://www.peppol.eu/>
[PEPPOL_EIA] http://www.peppol.eu/peppol_components/peppol-eia/eia
[PEPPOL_PostAward] http://www.peppol.eu/peppol_components/peppol-eia/eia#ict-architecture/post-award-eprocurement/models
[PEPPOL_Transp] http://www.peppol.eu/peppol_components/peppol-eia/eia#ict-architecture/transport-infrastructure/models
- [CEN_BII] <http://www.cen.eu/cwa/bii/specs>
[CEN_BII2] <http://www.cenbii.eu>
[BII_DespatchAdvice] ftp://ftp.cen.eu/public/CWAs/BII2/CWA16562/CWA16562-Annex-H-BII-Profile-30-DispatchOnly-V1_0_0.pdf
[BII_DespatchAdvModel] An browsable HTML version:
http://spec.cenbii.eu/BII2/fxhtml/Trdm016-DispatchAdvice/g_1.htm?http://spec.cenbii.eu/BII2/fxhtml/Trdm016-DispatchAdvice/g_5.htm
- [UBL] <http://docs.oasis-open.org/ubl/prd3-UBL-2.1/UBL-2.1.html>
[UBL_DespatchAdvice] <http://docs.oasis-open.org/ubl/prd3-UBL-2.1/xsd/maindoc/UBL-DespatchAdvice-2.1.xsd>
[Schematron] <http://www.schematron.com>
[XSLT] <http://www.w3.org/TR/xslt20/>
- [DIR_2006/112/EC] Council Directive 2006/112/EC of 28 November 2006 on the common system of value added tax, found at:
<http://eur-lex.europa.eu/LexUriServ/LexUriServ.do?uri=CELEX:32006L0112:EN:NOT>
- [DIR_1999/93/EC] Directive 1999/93/EC of the European Parliament and of the Council of 13 December 1999 on a Community framework for electronic signatures, found at:
<http://eur-lex.europa.eu/LexUriServ/LexUriServ.do?uri=CELEX:31999L0093:EN:NOT>
- [EIF] European Interoperability Framework 2.0, found at:
http://ec.europa.eu/isa/library/index_en.htm
http://ec.europa.eu/isa/documents/isa_annex_ii_eif_en.pdf
- [GS1 Keys] http://www.gs1.org/barcodes/technical/id_keys

3 Document history

3.1 Revision history

Version	Date	Author	Organisation	Description
1.0	2013-04-29	Project team	openPEPPOL	First version

3.2 Contributors

Thomas Pettersson, SFTI
Sven Rostgaard Rasmussen, DIGST
Philip Helger, BRZ
Per Martin Jøraholmen, DFO
Pavels Bubens, EDIGARD
Ole Ellerbæk Madsen, DIGST
Olav Astad Kristiansen, DIFI
Morten Gjestad, NETS
Martin Forsberg, SFTI
Ken Halpin, CELTRINO
Jerry Dimitriou, URPC
Jesper Larsen, DIGST
Jesper Kervin Franke, GS1
Helle Schade-Sørensen, DIGST
Georg Birgisson, MIDRAS
Erik Gustavsen, DIFI
Douglas Hill, GS1
Christian Druschke, CAPGEMINI
Anders Kingstedt, ESV
Oriol Bausà, Invinet

4 Principles and prerequisites

This chapter describes the principles and assumptions that underlie the use of the PEPPOL Despatch Advice. It is based on the CEN BII 30 Dispatch only profile.

4.1 Despatch Advice message in general

The electronic transaction described in this implementation guide is the Despatch Advice message. The Despatch Advice message is used in the fulfillment process by the supplier to notify the receiver about, the despatch and delivery period for the goods being sent, as well as details about the goods for cross checking with the order and ultimately the Electronic Despatch Advice is used for declaring how the despatched goods are packed.

The main activities supported by this message are:

- **Transport** Full description of how the goods are packed and delivered. A delivery is taken to be a number of items that are despatched as a single consignment to a single delivery address.
- **Ordering** States what is shipped; the quantity of goods shipped and what is outstanding.
- **Receiving goods** Full support of the process of receiving goods into a warehouse, inventory, in stores or simply at a reception counter.

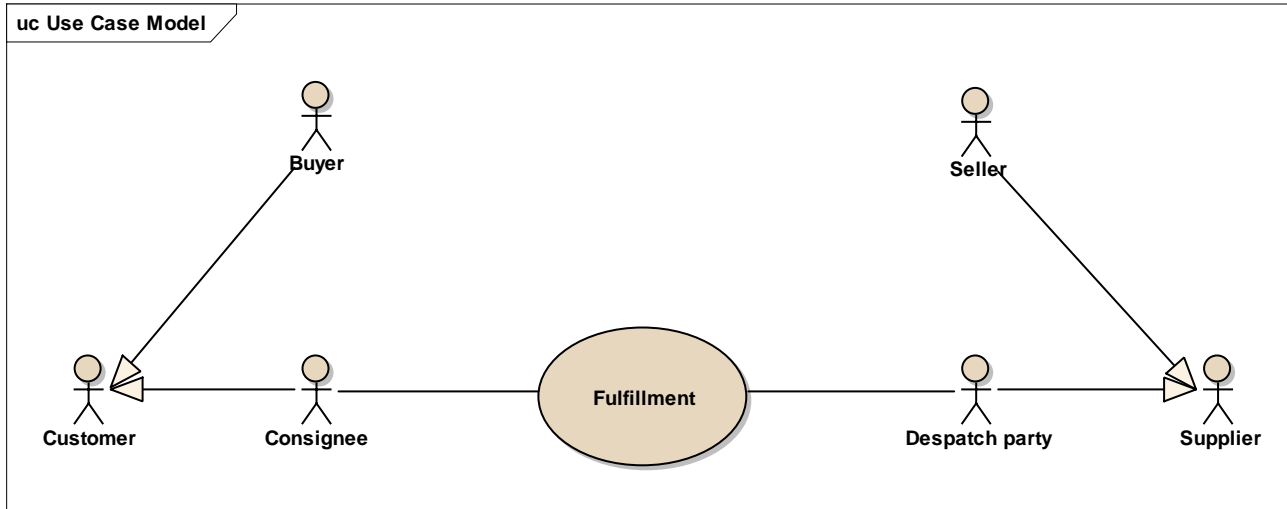
4.2 Parties and roles

The table below gives the definitions of the parties and roles of the fulfillment process.

Parties	Definition
Customer	The customer is the legal person or organization who is in demand of a product or service. Examples of customer roles: buyer, consignee, debtor, contracting authority.
Supplier	The supplier is the legal person or organization who provides a product or service. Examples of supplier roles: seller, despatch party, creditor, economic operator.
Carrier	The carrier handles the physical delivery/transportation of the despatched shipment. Used if a third party is handling the physical transport.
Roles	Definition
Consignee (UBL:DeliveryCustomerParty)	The consignee is the person or organization to which the products will be shipped and who is taking possession. The role is carried out by the customer or on behalf of the customer.
Despatch Party (UBL:DespatchSupplierParty)	The Despatch Party is the person or organization who provides (despatch) the goods or services. The role is carried out by the supplier or on behalf of the supplier. (Despatch Party is sometimes known as the Consignor)
Buyer (UBL:BuyerCustomerParty)	The buyer is the legal person or organization who buys or purchases the goods or services. The role is carried out by the customer or on behalf of the customer.
Seller	The seller is the legal person or organization who sells goods or

(UBL:SellerSupplierParty)	services to the customer. The role is carried out by the supplier or on behalf of the supplier.
Originating party (UBL:OriginatorCustomerParty)	The party who will eventually receive and consume the goods and on whose behalf the buyer makes the purchase.

The diagram below shows the roles in the fulfillment process.



4.3 Other important concepts

The table below gives the definitions of key concepts of the fulfillment process.

Term	Definition
Shipment	A contractual arrangement whereby an identifiable collection of goods items is to be transported from one party (usually a Supplier) to another party (usually a Customer).
Consignment	The transportation of an identifiable collection of goods items from one party (the Despatch Party) to another party (the Consignee) via one or more modes of transport.
Transport Handling Unit	A description of individual handling units in which the line items are packed.
Master Data	Master data is data which is generally static. Data such as locations or product item can be considered master data. The process of data alignment is the exchange, “up-front”, between trading partners of location and/or item data. In a GS1 context, master data is referenced by GS1 identification keys; the GLN – the global location number for locations, and the GTIN – global trade item number for item products.
Logistics Label	A logistics’ label has been applied to each of the pallets where the SSCCs are used and rendered as clear text numbers, address details and GS1 128 barcode. NB where multiple SSCCs are applied to logistics’ units on one pallet, there needs to be a GS1 logistics label applied and exterior of the pallet. The subordinate SSCCs on the individual logistics units should be packaged in such a way that they are not visible to the naked eye (in this scenario). For a full description of how to apply SSCCs and the GS1 Logistic label see link; http://www.gs1.eu/?page=&tudasbasis=60&lister=26

4.4 Despatch Advice transaction business requirements

General requirements (the identifiers in the first column are referenced to from the detailed message structure)

ID	Requirement
tbr16-016	The despatch advice must be identified with an identifier, with the issue date and possibly the issue time.
tbr16-001	The despatch advice message is used by the supplier to indicate to the receiver, the goods to be delivered and how they are packaged.
tbr16-002	To support transportation of goods, a delivery is taken to be a number of items that are despatched as a single consignment to a single delivery address. <ul style="list-style-type: none"> ➤ Each delivery must be accompanied by its own despatch advice ➤ Each despatch advice relates to one delivery address ➤ there may be multiple despatch advices to cover one purchase order
tbr16-003	The despatch advice may refer to an order. <ul style="list-style-type: none"> ➤ Each despatch advice relates to one purchase order.
tbr16-011	The despatch advice may state the reason for the chosen mode/means of transport.
tbr16-015	The despatch advice may state the volume and weight of the consignment.
tbr16-017	The despatch advice may contain a textual note.

Parties

ID	Requirement
tbr16-004	The despatch advice must identify the despatch party, who is responsible for the physical despatch. <ul style="list-style-type: none"> ➤ The despatch party may act on behalf of the supplier ➤ The receiver of goods may need to contact a person responsible for despatching the goods.
tbr16-005	The despatch advice must identify the consignee, who is responsible for receiving the goods. <ul style="list-style-type: none"> ➤ The receiver may act on behalf of the customer. ➤ The customer may need to be able to look up or verify the actual delivery address of the goods. The delivery address is where the despatched items have been shipped.
tbr16-006	The despatch advice may identify the Buyer, who is the commercially responsible party on whose behalf the goods are being received. <ul style="list-style-type: none"> ➤ The buyer is identified providing at least a full name and a postal address ➤ The buyer party information includes contact person that issuer or receiver can contact about status of delivery, like in-house routing from inventory or reception.
tbr16-012	The despatch advice may include the delivery address.
tbr16-013	The despatch advice may identify the Seller, who is legally responsible for providing the goods and on whose behalf the goods are being sent. <ul style="list-style-type: none"> ➤ The Seller is identified providing at least the full name and, the postal address and the VAT number ➤ The Seller party information includes contact person that issuer or receiver can contact about status of despatch.
tbr16-014	If the physical transport is provided by a third party, the despatch advice may identify that carrier. <ul style="list-style-type: none"> ➤ The carrier information may include the name of the driver.

Line Item

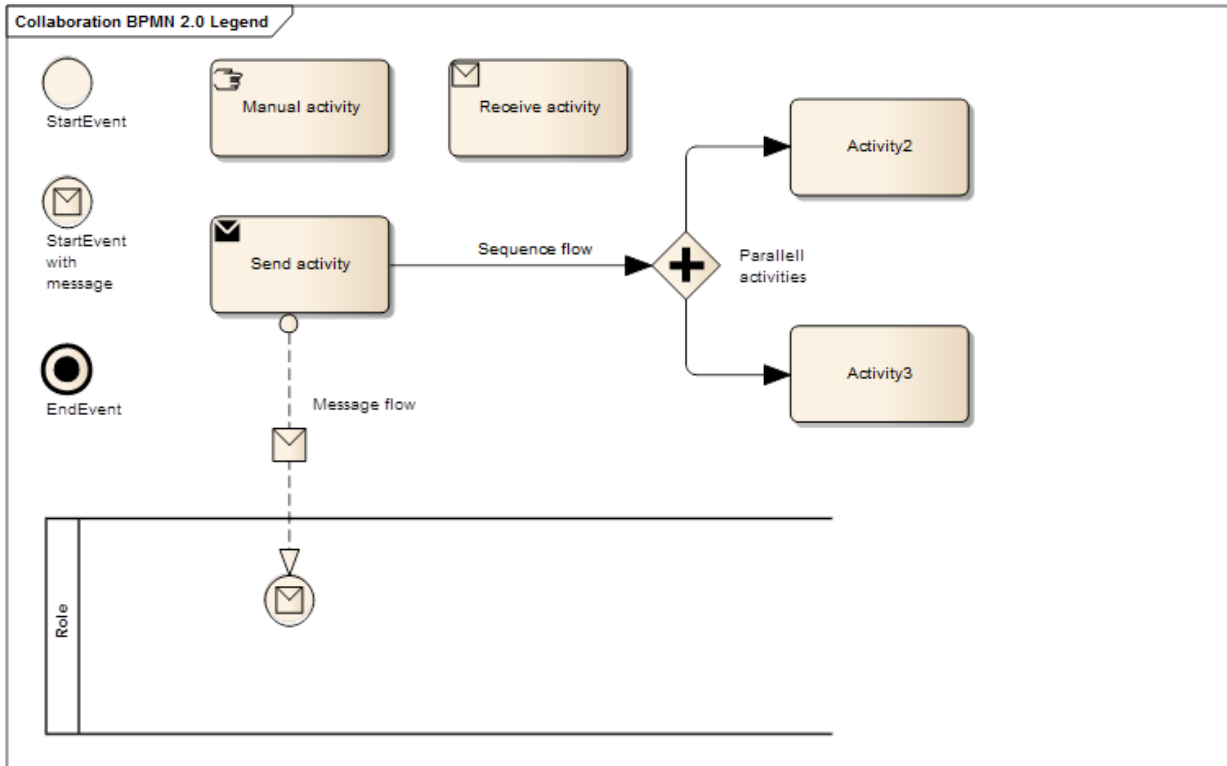
ID	Requirement
tbr16-007	Each despatch statement line should describe despatching of each order line. The line should provide reference to <ul style="list-style-type: none"> ➤ order line, ➤ delivered quantity, outstanding quantity (to be delivered on a different shipment). ➤ The line should provide for line note.

tbr16-008	Each line should identify the product shipped so the receiver can verify its content. This may include <ul style="list-style-type: none">➤ Item name,➤ Seller id➤ Item standard id➤ Dates, such as best before date, manufacturing date, etc.
tbr16-009	Each line should identify hazardous items that may require special handling during transport, receiving of goods and storage.
tbr16-010	Each line may identify the transport handling unit for each item delivered. The handling units may have external marking or bar codes that - during reception of goods - allow tracking and locating package units that the goods are placed in.

5 Process and typical scenarios

5.1 Legend for BPMN diagrams

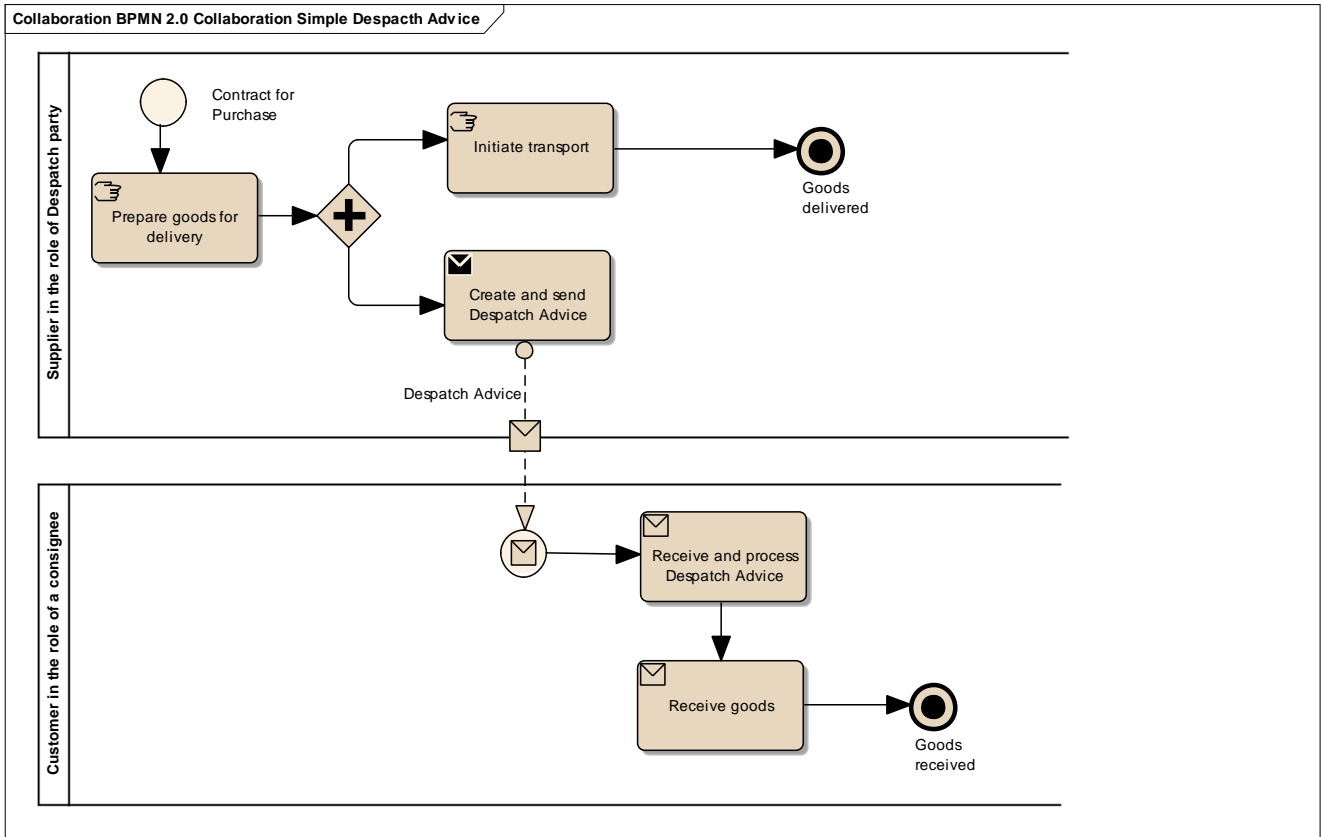
The diagrams are expressed in the BPMN notation. The diagram below serves as an explanation for the diagrams used in the process descriptions.



The following section and diagrams show the choreography of the business process involving various parties.

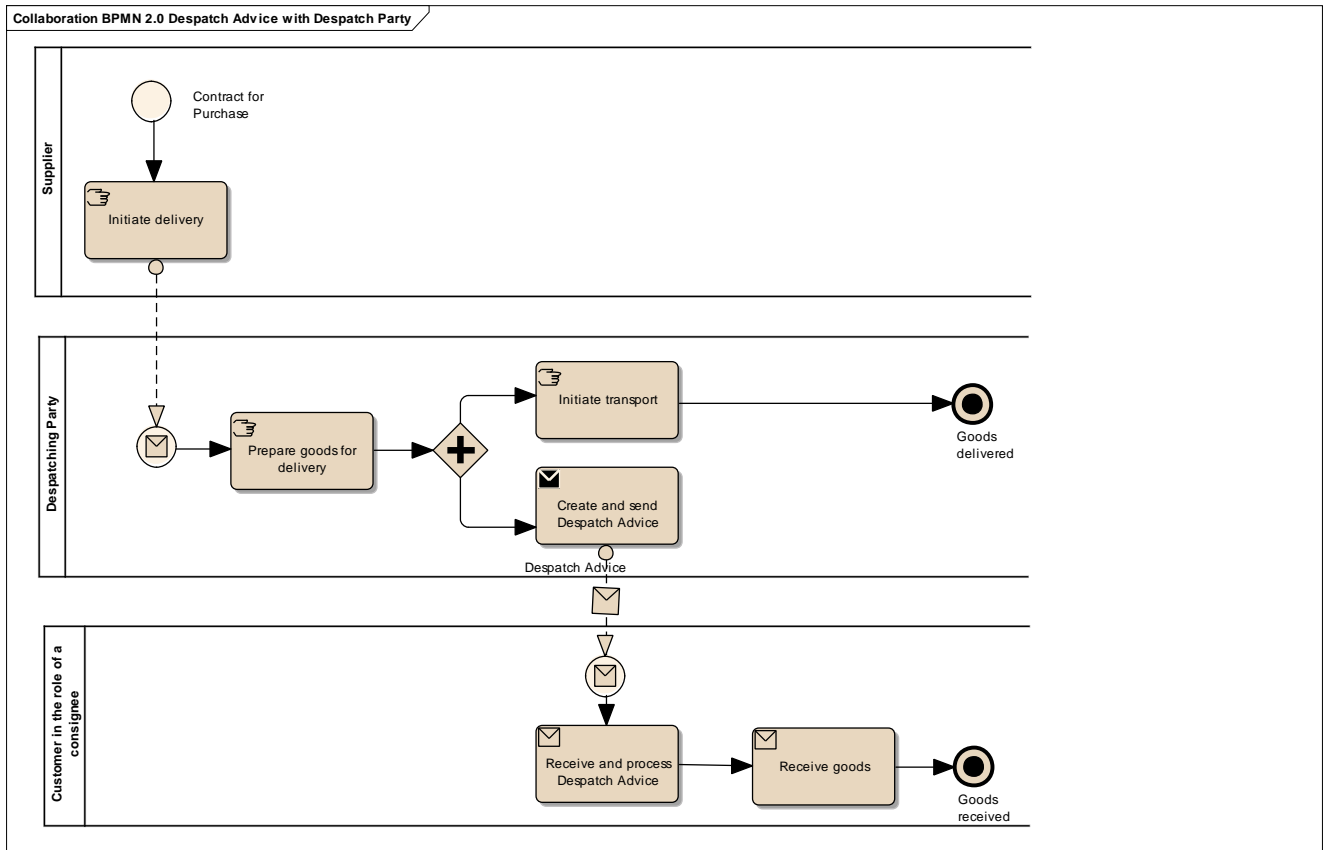
5.2 Simple process – two parties involved

Following the establishment of a contract for purchase the Supplier, in the role of Despatch party, delivers or provides the contracted goods or services to the customer, who has the role of a consignee.



5.3 More advanced process – use of Despatch party

The more advanced process is based on the simple process above with the addition of the Despatch party who is responsible for the physical preparation of the goods for delivery. This situation will typically occur when the supplier has outsourced the logistics function to another company.



5.4 Typical use cases

5.4.1 Use case 1 - Simple Despatch

This use case is a simple despatch where no handling units are used in the Despatch Advice. There are only two parties (legal entities) in this use case.

Use Case number	1
Use Case Name	Simple Despatch
Use Case Description	This use case is a simple despatch where no handling units are used in the Despatch Advice. There are only two parties (legal entities) in this use case.
Parties involved	Despatch party (In UBL: DespatchSupplierParty) (same legal entity as the Supplier/Seller in this use case) Consignee party (In UBL: DeliveryCustomerParty) (same legal entity as the Customer/Buyer in this use case)
Assumptions	<ol style="list-style-type: none"> 1. The Seller has received one order from the Buyer with <ol style="list-style-type: none"> a. 2 lines (2 articles) b. to be delivered at one delivery address c. at the same time. 2. The Seller has accepted the order without changes. 3. The Despatch party delivers the complete order as accepted
The flow	<ol style="list-style-type: none"> 1. The Seller collects the ordered articles 2. The Seller loads the articles in boxes 3. The Despatch party creates a Despatch advice message 4. The Despatch party sends Despatch advice message to the Consignee 5. The Consignee party receives the Despatch advice message 6. The Consignee party uses the content in the Despatch advice message for registration receipt. <ol style="list-style-type: none"> a. Two despatch lines, two items (No handling units in the message)
Result	<ol style="list-style-type: none"> 1. The Despatch advice message helped the Consignee party to prepare receipt <ol style="list-style-type: none"> a. At the right time b. At the right place (address) 2. The Despatch advice message helped the Consignee party in the process of register receipt to identify the <ol style="list-style-type: none"> a. Order b. The order lines c. The articles d. The delivered quantity
XML example file	See Annex A for a sample file illustrating Use Case 1.


5.4.2 Use case 2 - Simple Despatch with outstanding quantity.

This use case is a simple Despatch where there are no transport handling units, but an outstanding quantity on line level. There are various examples on use of the outstanding quantity and outstanding reason There are four parties (legal entities) in this use case.

Use Case number	2
Use Case Name	Simple Despatch with outstanding quantity
Use Case Description	This use case is a simple Despatch where there are no transport handling units, but an outstanding quantity on line level. There are various examples on use of the outstanding quantity and the outstanding reason. There are four parties (legal entities) in this use case.
Parties involved	Buyer (In UBL: BuyerCustomerParty) Seller (In UBL: SellerSupplierParty) Despatch party (In UBL: DespatchSupplierParty) (Different legal entity than the Seller in this use case) Consignee party (In UBL: DeliveryCustomerParty) (Different legal entity than the Buyer in this use case)
Assumptions	<ol style="list-style-type: none"> 1. The Seller has received one order from the Buyer with <ol style="list-style-type: none"> a. 5 lines (5 different items) b. To be delivered at one delivery address c. At the same time. 2. The Seller has accepted the order without changes. 3. The Seller can't deliver the complete order as accepted. 4. The first line contains the ordered quantity 5. The second line contains a delivery of 6 of 10 ordered items. The remaining 4 items will be delivered in another Despatch. 6. The third line contains a delivery of 6 of 10 ordered items. The remaining 4 items will not be delivered. 7. The fourth line contains a delivery of 6 of 10 items. 3 items will be delivered in another Despatch and 1 item will not be delivered. 8. The fifth line contains a delivery of 12 of 10 ordered items.
The flow	<ol style="list-style-type: none"> 1. The Seller collects the ordered items 2. The Seller loads the articles in boxes 3. The Despatch party creates a Despatch advice message 4. The Despatch party sends Despatch advice message to the Customer 5. The Consignee party receives the Despatch advice message 6. The Consignee party uses the content in Despatch advice message for registration receipt. <ol style="list-style-type: none"> a. Five Despatch lines with different articles, but a part of the articles related to line 2-5 is either outstanding or can't be delivered at all. (No handling units in the message)
Result	<ol style="list-style-type: none"> 1. The Despatch advice message helped the Consignee party to prepare receipt <ol style="list-style-type: none"> a. At the right time b. At the right place (address) 2. The Despatch advice message helped the Consignee party in the process of register receipt to identify the <ol style="list-style-type: none"> a. Order b. The order lines c. The items d. The delivered quantity e. The outstanding quantity to be delivered at a later time f. The outstanding quantity which will never be delivered
XML example file	See Annex A for a sample file illustrating Use Case 2.

5.4.3 Use case 3 - Despatch with Logistic units using GS1 Keys

This use case is a refined use of the Despatch Advice where several GS1 keys are applied within the Despatch Advice to identify various entities in the despatch advice, namely; Parties, Endpoints, Shipment id, consignment ids, logistic unit ids and product identification.

Use Case number	3
Use Case Name	Despatch Advice with Logistic units using GS1 Keys
Use Case Description	<p>Describes a complete process whereby a Despatch party generates a Despatch Advice based on information about the order and the product.</p> <p>The Despatch Advice enables the supplier / carrier to provide detailed information about the content of a shipment and enables a Buyer to reconcile, or confirm, the physical shipment against the order; it provides a mirror of the shipment’s packaging details and structure of the delivery.</p> <p>The Despatch Advice is sent by the Despatch party to the Consignee party when the goods are sent.</p>
Parties involved	Despatch party (In UBL: DespatchSupplierParty) (Different legal entity than the Seller in this use case) Seller (In UBL: SellerSupplierParty) Consignee party (In UBL: DeliveryCustomerParty) (Different legal entity than the Buyer in this use) Buyer (In UBL: BuyerCustomerParty)
Pre conditions	Master data alignment of locations (GLNs) and products (GTINs).
Post conditions	Despatch advice is received by the receiver of the goods.
Assumptions	<ol style="list-style-type: none"> a. The Despatch Advice has one shipment id (GSIN) assigned by the seller b. The Despatch Advice has one consignment id which has been assigned by the carrier (GINC) c. One delivery point (no cross docking) which is identified by a GLN. d. The four despatch lines are each an orderable unit – a GTIN. e. Two ordered units (GTINS) are packed on each pallet. f. There are two pallets in the shipment. g. Each standard pallet is assigned one logistics’ unit id (SSCC). h. A logistics’ label has been applied to each of the pallets where the SSCC is used rendered as clear text numbers, address details and GS1 128 barcode <p style="text-align: center;"><i>Relationship between the GTIN and the SSCC keys</i></p> 
The flow	<p>The Seller has accepted the order without changes.</p> <ol style="list-style-type: none"> 1. The Seller collects the ordered goods 2. The ordered goods consist of one pallet per ordered 2 line items. 3. The Despatch party loads the goods onto the transport. 4. The Despatch party sends the Despatch advice to the Consignee 5. The Consignee party receives the Despatch advice message 7. The Consignee party uses the content in the Despatch advice message for registration receipt.
Result	<ol style="list-style-type: none"> 1. The Despatch advice message helped the Consignee party to prepare for receipt of goods: <ol style="list-style-type: none"> a. At the right time b. At the right location (address) 2. The Despatch advice helped the Consignee party in the process of receipt registration to identify the: <ol style="list-style-type: none"> a. Order b. The order lines

	<ul style="list-style-type: none"> c. The logistics' handling units d. The goods description e. The delivered quantity f. The parties involved in the process
XML example file	See Annex A for a sample file illustrating Use Case 3.

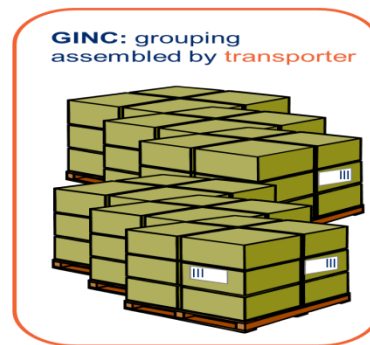
The following provides additional details and clarifications about the various keys and identifiers used in this Use Case, as well as the benefits implementers can obtain when using them. Ultimately there are two pictures clarifying the relationship between the GSIN and the GINC identifiers.

Beneath are an overview and an explanation of the keys used in the Use Case.	
GLN: Global location number	Despatch party - Organizational identification. Despatch party - Endpoint identification Consignee - Organizational identification. Consignee - Endpoint identification Buyer - Organizational identification. Buyer - Endpoint identification. Seller - Organizational identification Seller - Endpoint identification.
SSCC: Serial Shipping Container Code	Each transport handling unit is assigned an SSCC. The SSCC is the GS1 Identification Key for an item of any composition established for transport and/or storage which needs to be managed through the supply chain. The SSCC is assigned for the life time of the transport item and is a mandatory element on the GS1 Logistic Label
GSIN: Global Shipment Identification Number	Shipment identification. One shipment number for the despatch advice. A document level id that specifies the number of the Shipment along the entire shipment, which, may consist of several consignments. <ul style="list-style-type: none"> • Number assigned by the seller to identify a logical grouping of logistic or transport units that are typically assembled by the seller for a transport shipment. • It meets the World Customs Organisation (WCO) requirement for a Unique Consignment Reference (UCR). It is endorsed by ISO/IEC 15459 (ISO License Plate)
GINC: Global Identification Number of Consignment	One consignment number for the Despatch Advice <ul style="list-style-type: none"> • Used to identify a logical grouping of logistic or transport units that are assembled to be transported under one transport document. • It is used to identify a logical grouping of logistic units during a specific journey of which there may be multiple consignment stages.
GTIN: Global trade Item Number	Each ordered item as a GTIN. Product identification.

Beneath are an overview of the benefits implementers can get when using the keys and identifiers.	
GTIN: Global trade Item Number	<ul style="list-style-type: none"> • Correct goods and associated data have been sourced through upfront data alignment
GLN Global Location Number	<ul style="list-style-type: none"> • Precise and trustworthy location data has been achieved through GS1 master data alignment location registers.
SSCC: Serial Shipping Container Code	<ul style="list-style-type: none"> • Logistic units are individually identified with the SSCC (Serial Shipping Container Code) • The item (goods) details accessed by scanning (bar code) or reading (EPC/RFID) the SSCC on the logistic unit and accessing the relevant information. • The usage of the SSCC on a logistic unit is subject to rules, namely that multiple visible SSCCs on one logistics unit can only be used for transit purposes. <ul style="list-style-type: none"> ○ If two or more SSCCs are applied on a logistics unit then the units associated to a given SSCC have to be individually wrapped or bound together to form individual logistics units. ○ Multiple SSCCs can be applied to individual units on one logistic unit for subsequent cross docking but they HAVE to be wrapped so that they are not visible. • Additionally, a master logistics label needs to be applied to the whole logistics unit for the consignment to the distribution center.
GSIN: Global Shipment Identification Number	<ul style="list-style-type: none"> • A globally recognised shipping number used to uniquely identify the shipment as a whole as specified by the seller
GINC: Global Identification Number of Consignment	<ul style="list-style-type: none"> • A globally recognised consignment number used to uniquely identify the consignment as specified by the shipper.

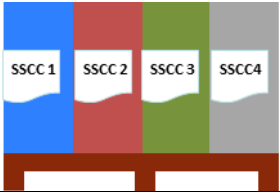
Supplementary clarification on the usage of the GSIN and the GINC.

Assembling of the keys:



5.4.4 Use case 4 - Despatch with weight, length and/or volume based items (ie vegetables, meat)


This use case demonstrates the use of the Despatch Advice, where the Seller is despatching items which are priced on weight, length and/or volume.

Use Case number	4
Use Case Name	Despatch with weight, length and/or volume based items (ie vegetables, meat)
Use Case Description	<p>This use case demonstrates the use of the Despatch Advice, where the Seller is despatching items which are priced on weight, length and/or volume. Therefore the weight, length or volume of the items is important. Transport handling units are used to indicate how the items are packed.</p> <p>The use case also demonstrates:</p> <ul style="list-style-type: none"> • The use of different party identifiers (GLN and Swedish organization number) • The use of ItemBestBeforeDate, ItemExpiryDate, ItemBatchNumber, ItemSerialNumbers, • The use of SSCC keys, • The use of ItemSellersIdentifier and ItemStandardIdentifier (GTIN).
Parties involved	Despatch party (In UBL: DespatchSupplierParty) (same legal entity as the Supplier/Seller in this use case) Consignee party (In UBL: DeliveryCustomerParty) (same legal entity as the Customer/Buyer in this use case)
Assumptions	<ol style="list-style-type: none"> 1. The Seller has received one order from the Buyer with <ol style="list-style-type: none"> a. 4 lines (4 items) which are priced by the weight b. To be delivered at one delivery address c. At the same time. 2. The Seller has accepted the order without changes. 3. The Seller delivers the complete order as accepted. 4. The items are in four separate transport handling units. 
The flow	<ol style="list-style-type: none"> 1. The Seller collects the ordered items 2. The Seller weighs the items. 3. The Seller loads the items into transport handling units (Boxes) 4. The Despatch party creates the Despatch Advice message 5. The Despatch party sends the Despatch Advice message to the Consignee 6. The Consignee party receives the Despatch Advice message 7. The Consignee party uses the content in the Despatch Advice message for registration receipt. <ol style="list-style-type: none"> a. Four despatch lines, four items. b. Handling units are identified using SSCC identifiers c. The delivered weight is used in the receipt activity (for verification) 8. The Consignee party uses the content in the Despatch Advice message for storing- and handling. <ol style="list-style-type: none"> a. Items can be stored by BestBeforeDate or ExpiryDate b. Items can be stored by batch and/or serial numbers c. Items can be handled according to the weight of the handling unit
Result	<ol style="list-style-type: none"> 1. The Despatch Advice message helped the Consignee party to prepare receipt <ol style="list-style-type: none"> a. At the right time b. At the right place (address) c. With appropriate storage facilities 2. The Despatch Advice message helped the Consignee party in the process of register receipt to identify the <ol style="list-style-type: none"> a. Order b. The order lines c. The transport handling units d. The items e. The delivered quantity/weight

XML example file	See Annex A for a sample file illustrating Use Case 4.
-------------------------	--

5.4.5 Use case 5 – Advanced Despatch demonstrating most of the business terms

This use case is a relatively more complex use of the Despatch Advice which will demonstrate the use of most of the business terms available in the electronic Despatch Advice message.

Use Case number	5
Use Case Name	Advanced Despatch Advice demonstrating most of the business terms
Use Case Description	<p>This use case is a very complex use of the Despatch Advice which will demonstrate the use of all of the existing business terms available in the electronic Despatch advice message.</p> <p>The use case will also demonstrate different use of:</p> <ul style="list-style-type: none"> • Party identification • Item identification • Packages
Parties involved	<p>Buyer (In UBL: BuyerCustomerParty) Seller (In UBL: SellerSupplierParty) Despatch party (In UBL: DespatchSupplierParty) (Different legal entity than the Seller in this use case) Consignee party (In UBL: DeliveryCustomerParty) (Different legal entity than the Buyer in this use case) Originating party (In UBL: OriginatorCustomerParty)</p>
Assumptions	<ol style="list-style-type: none"> 1. The Seller party and Despatch party are different legal entities 2. The Buyer party and Consignee party are different legal entities 3. The Seller has received one order from the Buyer <ol style="list-style-type: none"> a. 5 order lines (5 items) b. Order line 4 is not delivered in this despatch c. The second Despatch line contains a delivery 6 of 10 ordered items. The remaining 4 items will be delivered in another despatch. d. The third Despatch line is weight based e. Order to be delivered at one delivery address f. At the same time. g. Despatch line 4 contain hazardous items 4. The Seller has accepted the order without changes 5. The Despatch party is responsible for the delivery and is using a carrier for the physical transportation 6. The items in the first and second line are in the same transport handling unit 7. The items in line three and four are in two separate transport handling units 
The flow	<ol style="list-style-type: none"> 1. The Seller collects the ordered items 2. The Seller loads the items into transport handling units (Boxes, crates, pallets etc.) 3. The Despatch party identifies all shipping details 4. The carrier picks up the goods for transport 5. The Despatch party creates the Despatch advice message 6. The Despatch party sends the Despatch advice message to the Consignee 7. The Consignee can use the tracking ID to track the shipment

	<ol style="list-style-type: none"> 8. The Consignee party receives the Despatch advice message 9. The carrier delivers the goods to the Consignee 10. The Consignee party uses the content in the Despatch advice message for registration receipt. <ol style="list-style-type: none"> a. Four Despatch lines, four items. b. Handling units are identified using SSCC identifiers 11. The Consignee party uses the content in the Despatch advice message for storing- and handling. <ol style="list-style-type: none"> a. Handling unit with Hazardous items are identified b. Items can be stored by best before date, by batch and serial number c. Items can be handled according to the weight of the handling unit
<p>Result</p>	<ol style="list-style-type: none"> 1. The Despatch advice message helped the Consignee party to prepare receipt <ol style="list-style-type: none"> a. At right time b. At the right place (address) c. With appropriate tools and storage facilities d. In a secure manner 2. The Despatch advice message helped the Consignee party in the process of register receipt to identify the <ol style="list-style-type: none"> a. Order b. The order lines c. The transport handling units d. The articles e. The delivered quantity/weight
<p>XML example file</p>	<p>See Annex A for a sample file illustrating Use Case 5.</p>

6 Codelists

6.1 Codelists for coded elements

Table of the code lists used in the Despatch Advice transaction:

Business Term	Source	Subset	Xpath	listID
Country Code	ISO 3166-1 alpha2	-	cac:Country/cbc:IdentificationCode	ISO3166-1:Alpha2
Unit Of Measure	UN/ECE Rec 20	-	@unitCode	UNECERec20 Note: Use this list identifier in the attribute unitCodeListID
UNDG Code	UN CL 8273	-	cbc:UNDGCode	UNCL8273
Transport Handling Unit Type Code	UN/ECE Rec 21	-	cbc:TransportHandlingUnitTypeCode	UNECERec21
Handling unit gross weight and Handling unit gross volume	UN CL 6313	"AAB" for Unit gross weight "AAW" for Gross volume	cac:MeasurementDimension/ cbc:AttributeID	UNCL6313 (use attribute schemeID)

ISO 3166-1 alpha2:

http://www.iso.org/iso/home/standards/country_codes.htm

UN/ECE Rec 20:

<http://www.unece.org/tradewelcome/areas-of-work/un-centre-for-trade-facilitation-and-e-business-uncefact/outputs/cefactrecommendationsrec-index/list-of-trade-facilitation-recommendations-n-16-to-20.html>

UN CL 8273

<http://www.unece.org/trade/untdid/d12b/tred/tred8273.htm>

UN CL 6313

<http://www.unece.org/trade/untdid/d12b/tred/tred6313.htm>

UN/ECE Rec 21

<http://www.unece.org/tradewelcome/areas-of-work/un-centre-for-trade-facilitation-and-e-business-uncefact/outputs/cefactrecommendationsrec-index/list-of-trade-facilitation-recommendations-n-21-to-24.html>

6.2 Codelists for identifier schemes

The table of the code lists below describes constrains for the values of schemeID for identifiers in the Despatch Advice transaction.

Use of attributes for identifiers:

schemeID indicates what type of identifier is used (for example the type of numbering system) **(Mandatory)**
schemeAgencyID indicates the agency responsible for issuing the ID (for example AgencyID 9 corresponding to GS1) **(Optional)**
schemeAgencyName the name of the Agency responsible for issuing the ID. **(Optional)**



Business Term	Allowed SchemeID	Applicable Xpath	Note
Party Identifier	See “PEPPOL Policy for using Identifiers”	cbc:EndpointID/@schemeID cac:PartyIdentification/cbc:ID/@schemeID	

7 Description of selected parts of the despatch advice message

7.1 Parties

The following parties/roles may be specified in the message. The same actor may play more than one role depending on the handling routine.

7.1.1 Despatch party (DespatchSupplierParty)

The Despatch Party is the person or organization who provides (despatch) the goods or services. The role is carried out by the supplier or on behalf of the supplier. (Despatch Party is sometimes known as the Consignor). The Despatch Party is mandatory information in the Despatch Advice message.

Example:

```
<cac:DespatchSupplierParty>
  <cac:Party>
    <cbc:EndpointID schemeID="DK:CVR">DK87654321</cbc:EndpointID>
    <cac:PartyIdentification>
      <cbc:ID schemeID="GLN" schemeAgencyID="9">3213213213243</cbc:ID>
    </cac:PartyIdentification>
    <cac:PartyName>
      <cbc:Name>Sender Company</cbc:Name>
    </cac:PartyName>
    <cac:Contact>
      <cbc:Name>John</cbc:Name>
      <cbc:Telephone>123456789</cbc:Telephone>
      <cbc:Telefax>8273741728</cbc:Telefax>
      <cbc:ElectronicMail>John@SenderCompany.dk</cbc:ElectronicMail>
    </cac:Contact>
  </cac:Party>
</cac:DespatchSupplierParty>
```

7.1.2 Consignee (DeliveryCustomerParty)

The Consignee is the person or organization to which the products will be shipped and who is taking possession. The role is carried out by the customer or on behalf of the customer. The Consignee is mandatory information in the Despatch Advice message.

Example:

```
<cac:DeliveryCustomerParty>
  <cac:Party>
    <cbc:EndpointID schemeID="DK:CVR">DK12345678</cbc:EndpointID>
    <cac:PartyIdentification>
      <cbc:ID schemeID="GLN" schemeAgencyID="9">1231412341323</cbc:ID>
    </cac:PartyIdentification>
    <cac:PartyName>
      <cbc:Name>Reciever Company</cbc:Name>
    </cac:PartyName>
    <cac:PostalAddress>
      <cbc:ID>25</cbc:ID>
      <cbc:StreetName>Reciever Street 1</cbc:StreetName>
      <cbc:AdditionalStreetName>Reciever Building</cbc:AdditionalStreetName>
      <cbc:CityName>Reciever City</cbc:CityName>
      <cbc:PostalZone>9000</cbc:PostalZone>
      <cbc:CountrySubentity>Region A</cbc:CountrySubentity>
    </cac:PostalAddress>
  </cac:Party>
</cac:DeliveryCustomerParty>
```

```

1:Alpha2">DK</cbc:IdentificationCode>
    <cbc:IdentificationCode listID="ISO3166-
    </cac:Country>
    </cac:PostalAddress>
  </cac:Party>
  <cac:DeliveryContact>
    <cbc:Name>Tim</cbc:Name>
    <cbc:Telephone>987654321</cbc:Telephone>
    <cbc:Telefax>4546474849</cbc:Telefax>
    <cbc:ElectronicMail>Tim@RecieverCompany.dk</cbc:ElectronicMail>
  </cac:DeliveryContact>
</cac:DeliveryCustomerParty>

```

7.1.3 Buyer (BuyerCustomerParty)

The buyer is the legal person or organization who buys or purchases the goods or services. The role is carried out by the customer or on behalf of the customer.

The Buyer is optional information in the Despatch Advice message.

Example:

```

<cac:BuyerCustomerParty>
  <cac:Party>
    <cac:PartyIdentification>
      <cbc:ID schemeID="GLN" schemeAgencyID="9">1251513513245</cbc:ID>
    </cac:PartyIdentification>
    <cac:PartyName>
      <cbc:Name>Buyer Company</cbc:Name>
    </cac:PartyName>
  </cac:Party>
</cac:BuyerCustomerParty>

```

7.1.4 Seller (SellerSupplierParty)

The seller is the legal person or organization who sells goods or services to the customer. The role is carried out by the supplier or on behalf of the supplier. The Seller is optional information in the Despatch Advice message.

Example:

```

<cac:SellerSupplierParty>
  <cac:Party>
    <cac:PartyIdentification>
      <cbc:ID schemeID="GLN" schemeAgencyID="9">1231612366324</cbc:ID>
    </cac:PartyIdentification>
    <cac:PartyName>
      <cbc:Name>Seller Company</cbc:Name>
    </cac:PartyName>
    <cac:Contact>
      <cbc:Name>Allan</cbc:Name>
      <cbc:Telephone>43444546</cbc:Telephone>
      <cbc:Telefax>12345678</cbc:Telefax>
      <cbc:ElectronicMail>Allan@SellerCompany.dk</cbc:ElectronicMail>
    </cac:Contact>
  </cac:Party>
</cac:SellerSupplierParty>

```

7.1.5 Originating party (OriginatorCustomerParty)

The party who will eventually receive and consume the goods and on whose behalf the buyer makes the purchase. The Originator Party is optional information in the Despatch Advice message.

Example:

```

<cac:OriginatorCustomerParty>

```



```
<cac:Party>  
  <cac:PartyIdentification>  
    <cbc:ID schemeID="GLN" schemeAgencyID="9">1234415341925</cbc:ID>  
  </cac:PartyIdentification>  
  <cac:PartyName>  
    <cbc:Name>Originator</cbc:Name>  
  </cac:PartyName>  
</cac:Party>  
</cac:OriginatorCustomerParty>
```

7.1.6 Example of party identifiers

This section contains examples of party identifiers. See the openPEPPOL “Policy for use of Identifiers” for the complete list of identifier schemes.

7.1.6.1 Using Swedish organization number as PartyIdentification

In Sweden parties often are identified by a company organization number. This can be used for all parties.

```
<cac:PartyIdentification>  
  <cbc:ID schemeID="SE:ORGNR">5541277711</cbc:ID>  
</cac:PartyIdentification>
```

7.1.6.2 Using Norwegian organization number as PartyIdentification

In Norway parties often are identified by a company organization number. This can be used for all parties.

```
<cac:PartyIdentification>  
  <cbc:ID schemeID="NO:ORGNR">987654321</cbc:ID>  
</cac:PartyIdentification>
```

7.1.6.3 Using Danish organization number as PartyIdentification

In Denmark parties often are identified by a company organization number. This can be used for all parties.

```
<cac:PartyIdentification>  
  <cbc:ID schemeID="DK:CVR">DK16356706</cbc:ID>  
</cac:PartyIdentification>
```

7.1.6.4 Using Italian VAT-number as PartyIdentification

In Italy parties often are identified by their VAT-number. This can be used for all parties.

```
<cac:PartyIdentification>  
  <cbc:ID schemeID="IT:VAT">IT01234567890</cbc:ID>  
</cac:PartyIdentification>
```

7.2 Order reference

Used to provide a reference to the purchase order on which the Despatch Advice is based. There may be multiple Despatch Advices to cover one purchase order. Each Despatch Advice relates to one purchase order. The reference to Order Line-ID is required in the UBL syntax. To cater for scenarios where no order line reference exist a dummy value must be applied. The dummy value must consist of the characters **NA**.

Example header level:

```
<cac:OrderReference>  
  <cbc:ID>4321</cbc:ID>  
</cac:OrderReference>
```

Example Line level:

```
<cac:OrderLineReference>  
  <cbc:LineID>5</cbc:LineID>  
</cac:OrderLineReference>
```

Or

```
<cac:OrderLineReference>  
  <cbc:LineID>NA</cbc:LineID>  
</cac:OrderLineReference>
```

7.3 Shipment

Description of the actual shipment that contains the goods that are being despatched.

7.3.1 Shipment ID

In some uses of the Despatch Advice, there is no unique identifier assigned to the shipment. However, the UBL syntax requires the Shipment ID. Consequently, to be able to use elements such as GrossWeightMeasure or CarrierParty, the Shipment/ID must be filled in. To cater for scenarios where no ID exist a dummy value must be applied. The dummy value must consist of the characters **NA**.

Example:

```
<cac:Shipment>  
  <cbc:ID>NA</cbc:ID>  
  <cbc:Information>Free text information relating to the Shipment</cbc:Information>  
  <cbc:GrossWeightMeasure unitCode="KGM"  
unitCodeListID="UNECERec20">23</cbc:GrossWeightMeasure>  
  <cbc:GrossVolumeMeasure unitCode="MTQ"  
unitCodeListID="UNECERec20">27</cbc:GrossVolumeMeasure>  
  <cac:Consignment>  
    <cbc:ID>12345</cbc:ID>  
    <cac:CarrierParty>  
      <cac:PartyName>  
        <cbc:Name>CarrierPart</cbc:Name>  
      </cac:PartyName>  
    </cac:CarrierParty>  
  </cac:Consignment>  
  <cac:Delivery>  
    <cac:EstimatedDeliveryPeriod>  
      <cbc:StartDate>2013-03-15</cbc:StartDate>  
      <cbc:StartTime>08:00:00</cbc:StartTime>  
      <cbc:EndDate>2013-03-16</cbc:EndDate>  
      <cbc:EndTime>12:00:00</cbc:EndTime>  
    </cac:EstimatedDeliveryPeriod>  
  <cac:Despatch>  
    <cbc:ActualDespatchDate>2013-03-13</cbc:ActualDespatchDate>  
    <cbc:ActualDespatchTime>08:00:00</cbc:ActualDespatchTime>
```

```
</cac:Despatch>  
</cac:Delivery>  
</cac:Shipment>
```

7.4 Despatch line

Description of items that are being despatched.

7.4.1 Item description and identification

Each despatch line contains elements for description and identification of the item. Normally only one of the identifiers is needed in the message.

Example:

```
<cac:Item>  
  <cbc:Name>Item123</cbc:Name>  
  <cac:SellersItemIdentification>  
    <cbc:ID>010120401</cbc:ID>  
  </cac:SellersItemIdentification>  
  <cac:StandardItemIdentification>  
<cbc:ID schemeID="GTIN" schemeAgencyID="9" schemeAgencyName="GS1">7611104117056</cbc:ID>  
  </cac:StandardItemIdentification>  
</cac:Item>
```

7.4.2 Outstanding quantity

The outstanding element on the Despatch line is both used to signal the outstanding quantity and to inform about delivery discrepancies.

The handling of “The outstanding quantity which will never be delivered” is done like this: The amount that is declared in the element OutstandingQuantity is equivalent to the amount that will be delivered in a later Despatch. This implicitly means that the missing items that are NOT declared in the OutstandingQuantity cant or will not will be delivered.

Example 1:

10 items are ordered, 6 items are delivered and the rest of 4 items will be delivered later:

Quantity ordered: 10

Quantity delivered: 6

Outstanding quantity: 4

```
<cbc:DeliveredQuantity unitCode="EA" unitCodeListID="UNECERec20">6</cbc:DeliveredQuantity>  
<cbc:OutstandingQuantity unitCode="EA" unitCodeListID="UNECERec20">4</cbc:OutstandingQuantity>
```

Example 2:

10 items are ordered. 6 items are delivered and the rest of 4 items will NOT be delivered:

Quantity ordered: 10

Quantity delivered: 6

Outstanding quantity: 0

```
<cbc:DeliveredQuantity unitCode="EA" unitCodeListID="UNECERec20">6</cbc:DeliveredQuantity>  
<cbc:OutstandingQuantity unitCode="EA" unitCodeListID="UNECERec20">0</cbc:OutstandingQuantity>
```

Example 3:

10 items are ordered. 6 items are delivered and 3 will be delivered later and 1 item will NOT be delivered:

Quantity ordered: 10



Quantity delivered: 6
Outstanding quantity: 3

```
<cbc:DeliveredQuantity unitCode="EA" unitCodeListID="UNECERec20">6</cbc:DeliveredQuantity>  
<cbc:OutstandingQuantity unitCode="EA" unitCodeListID="UNECERec20">3</cbc:OutstandingQuantity>
```

Ref. use case 2 above.

7.4.3 Hazardous item

The PEPPOL Despatch Advice also contains the possibility to inform the Consignee about Hazardous Items. This is done by informing the dangerous regulation code for example ADR (Road transport), IMDG (transport by sea) or RID (railroad transport). When declaring hazardous items it is recommended to use the UNDG code to inform about the convention the item is declared hazardous under. When the UNDG code has been declared the Hazard class is declared. The Hazard class corresponds to the hazardous class of the item for example class 2.3 which indicates Poisonous Gas.

Additionally it is important to state that the transport handling unit is containing Hazardous risks. See beneath for an example of declaring hazardous items.

```
<cac:HazardousItem>  
  <cbc:UNDGCode listID="UNCL8273" >ADR</cbc:UNDGCode>  
  <cbc:HazardClassID>2.3</cbc:HazardClassID>  
</cac:HazardousItem>  
<cac:Shipment>  
  <cbc:ID>NA</cbc:ID>  
  <cac:TransportHandlingUnit>  
    <cbc:HazardousRiskIndicator>true</cbc:HazardousRiskIndicator>  
  </cac:TransportHandlingUnit>  
</cac:Shipment>
```

7.4.4 Serial numbers

If each of the delivered items is marked with an individual serial number, these numbers may be sent in the Despatch Advice on Item level.

```
<cac:Item>  
  <cac:ItemInstance>  
    <cbc:SerialID>OR250RHZ444</cbc:SerialID>  
  </cac:ItemInstance>  
  <cac:ItemInstance>  
    <cbc:SerialID>OR250RHZ4445</cbc:SerialID>  
  </cac:ItemInstance>  
  <cac:ItemInstance>  
    <cbc:SerialID>OR250RHZ4446</cbc:SerialID>  
  </cac:ItemInstance>  
</cac:Item>
```

7.4.5 Batch/Lot numbers, Expiry Date and Best Before Date

The Batch number (Lot number) applies to all items in the despatch line.

Expiry date is used for medical drugs.

Best before date is often used for food.

Example 1:

```
<cac:ItemInstance>
```

```
<cac:LotIdentification>  
  <cbc:LotNumberID>898A129</cbc:LotNumberID>  
  <cbc:ExpiryDate>2015-07-01</cbc:ExpiryDate>  
</cac:LotIdentification>  
</cac:ItemInstance>
```

Example 2:

```
<cac:ItemInstance>  
  <cbc:BestBeforeDate>2015-04-15</cbc:BestBeforeDate>  
</cac:LotIdentification>  
</cac:ItemInstance>
```

7.4.6 Transport handling unit

The items on a Despatch line may be packed in several transport handling units which are the physical handling units such as box, container, pallet, etc. containing the consignment.

Serial shipping container code (SSCC) issued by GS1 may be used to identify the transport handling unit. Note that the same physical handling unit may contain items from different despatch lines. Implemented by referencing the same SSCC code in the ID element of the TransportHandlingUnit on several despatch lines.

Example:

```
<cac:TransportHandlingUnit>  
  <cbc:ID schemeID="SSCC" schemeAgencyName="GS1">123456789012345675</cbc:ID>  
  <cbc:TransportHandlingUnitTypeCode listID="UNECERec21">CT  
</cbc:TransportHandlingUnitTypeCode>  
  <cbc:ShippingMarks>Free text information that is written/printed on to the transport handling unit  
</cbc:ShippingMarks>  
  <cac:MeasurementDimension>  
    <cbc:AttributeID schemeID="UNCL6313">AAB</cbc:AttributeID>  
    <cbc:Measure unitCode="KGM">23.00</cbc:Measure>  
  </cac:MeasurementDimension>  
</cac:TransportHandlingUnit>
```

8 Despatch Advice Business Rules

8.1 Business rules

Rule ID	Rule	Target	Error level
BII2-T16-R009	A consignee party SHOULD have the party name or a party identifier	Consignee Party	warning
BII2-T16-R001	A despatch advice MUST have a customization identifier	despatch advice	fatal
BII2-T16-R002	A despatch advice MUST have a profile identifier	despatch advice	fatal
BII2-T16-R003	A despatch advice MUST have a document identifier	despatch advice	fatal
BII2-T16-R004	A despatch advice MUST have a document issue date	despatch advice	fatal
BII2-T16-R005	A despatch advice SHOULD have an order identifier	despatch advice	warning
BII2-T16-R006	A despatch advice MUST have a Despatch party	despatch advice	fatal
BII2-T16-R008	A despatch advice MUST have a consignee party	despatch advice	fatal
BII2-T16-R012	A despatch advice MUST have at least one despatch advice line	despatch advice	fatal
BII2-T16-R013	Each despatch advice line MUST have a despatch line identifier that is unique within the despatch advice	despatch advice Line	fatal
BII2-T16-R016	Each despatch advice line MUST have an item identifier and/or an item name	despatch advice Line	fatal
BII2-T16-R017	Each despatch advice line SHOULD have a delivered quantity	despatch advice Line	warning
BII2-T16-R019	Each despatch advice line delivered quantity MUST not be negative	despatch advice Line	fatal
BII2-T16-R020	Each despatch advice line delivered quantity SHOULD have an associated unit of measure	despatch advice Line	warning
BII2-T16-R021	An outstanding quantity reason SHOULD be provided if the despatch line contains an outstanding quantity	despatch advice Line	warning
BII2-T16-R011	Shipment identifier MUST be provided if the despatch advice contains shipment information	despatched shipment	fatal
BII2-T16-R007	A Despatch party SHOULD have the Despatch party name	Despatch Party	warning
BII2-T16-R018	An item standard identifier MUST have an identification schema (e.g. GTIN)	Item	fatal
OP-T16-R001	A country identification code MUST have a list identifier attribute "ISO3166-1:Alpha2".	despatch advice	fatal
OP-T16-R002	A unit code attribute MUST have a unit code list identifier attribute "UNECERec20"	despatch advice	fatal
OP-T16-R003	A UNDG code MUST have a list identifier attribute "UNCL8273"	despatch advice	fatal
OP-T16-R004	A transport handling unit type code MUST have a list identifier attribute "UNECERec21".	despatch advice	fatal
OP-T16-R005	An Endpoint Identifier Scheme MUST be from the list of PEPPOL Party Identifiers.	despatch advice	Fatal
OP-T16-R006	A Party Identifier Scheme MUST be from the list of PEPPOL Party Identifiers	despatch advice	fatal
OP-T16-R007	The handling unit measure AttributeID MUST be of value "AAB" for Unit gross weight or "AAW" for Gross volume	Handling unit	fatal

9 Message structure and information content

9.1 Technical parameters

9.1.1 UBL Version ID

This BIS is using the UBL 2.1 syntax. The namespace of the XML-message does only communicate the major version number. Since it is important for the receiver to also know what minor version of the syntax that is used, the element UBLVersionID must be stated with the value **2.1**.

9.1.2 Profile ID

The ProfileID identifies the process the business document is part of. PEPPOL BIS uses the identification system according to BII:

ProfileID: urn:www.cenbii.eu:profile:bii30:ver2.0

9.1.3 Customization ID

The Customization identifies the specification of content and rules that apply to the transaction. This BIS has required some minor additions and changes to the CEN BII transaction. Following the CENBII methodology any extension must be communicated by adding an extension ID onto the Customization ID.

Original CustomizationID: urn:www.cenbii.eu:transaction:biitrns016:ver1.0

OpenPEPPOL ExtensionID: urn:www.peppol.eu:bis:peppol30a:ver1.0

CustomizationID to use:

urn:www.cenbii.eu:transaction:biitrns016:ver1.0:extended:urn:www.peppol.eu:bis:peppol30a:ver1.0

9.1.4 Namespaces

The target namespace for the UBL2.1 Despatch Advice is:

urn:oasis:names:specification:ubl:schema:xsd:DespatchAdvice-2

9.2 XML Schema Guideline and information content

Structure

Occurrence	Element/Attribute	BII Business Term	Info req.
DespatchAdvice			
1 .. 1	cbc:UBLVersionID		
1 .. 1	cbc:CustomizationID	Customization identifier	tir16-002
1 .. 1	cbc:ProfileID	Profile identifier	tir16-001
1 .. 1	cbc:ID	Document identifier	tir16-003
1 .. 1	cbc:IssueDate	Despatch advice issue date	tir16-004
0 .. 1	cbc:IssueTime	Despatch advice issue time	tir16-005
0 .. 1	cbc:Note	Despatch note	tir16-088
0 .. 1	cac:OrderReference		
1 .. 1	cbc:ID	Order reference	tir16-006
1 .. 1	cac:DespatchSupplierParty		
1 .. 1	cac:Party		
0 .. 1	cbc:EndpointID	Electronic address identifier	tir16-071
0 .. 1	cac:PartyIdentification		
1 .. 1	cbc:ID	Despatching party identifier	op-tir16-001
0 .. 1	cac:PartyName		
1 .. 1	cbc:Name	Despatching party name	tir16-007
0 .. 1	cac:Contact		
0 .. 1	cbc:Name	Contact person name	tir16-008
0 .. 1	cbc:Telephone	Contact telephone number	tir16-012
0 .. 1	cbc:Telefax	Contact fax number	tir16-010
0 .. 1	cbc:ElectronicMail	Contact email address	tir16-013
1 .. 1	cac:DeliveryCustomerParty		
1 .. 1	cac:Party		
0 .. 1	cbc:EndpointID	Consignee party identifier	tir16-016
0 .. 1	cac:PartyIdentification		
1 .. 1	cbc:ID	Consignee party identifier	tir16-015
0 .. 1	cac:PartyName		
1 .. 1	cbc:Name	Consignee party name	tir16-014
0 .. 1	cac:PostalAddress		
0 .. 1	cbc:ID	Consignee party address identifier	tir16-017
0 .. 1	cbc:StreetName	Address line 1	tir16-018
0 .. 1	cbc:AdditionalStreetName	Address line 2	tir16-019
0 .. 1	cbc:CityName	City	tir16-020
0 .. 1	cbc:PostalZone	Post code	tir16-021
0 .. 1	cbc:CountrySubentity	Country subdivision	tir16-022
0 .. 1	cac:Country		
1 .. 1	cbc:IdentificationCode	Country code	tir16-023
0 .. 1	cac:DeliveryContact		
0 .. 1	cbc:Name	Contacting details	tir16-024
0 .. 1	cbc:Telephone	Contact telephone number	tir16-027
0 .. 1	cbc:Telefax	Contact fax number	tir16-026
0 .. 1	cbc:ElectronicMail	Contact email address	tir16-028
0 .. 1	cac:BuyerCustomerParty		
1 .. 1	cac:Party		
0 .. 1	cac:PartyIdentification		
1 .. 1	cbc:ID	Buying party identifier	tir16-030
0 .. 1	cac:PartyName		
1 .. 1	cbc:Name	Buying party name	tir16-029
0 .. 1	cac:SellerSupplierParty		
1 .. 1	cac:Party		
0 .. 1	cac:PartyIdentification		
1 .. 1	cbc:ID	Selling party identifier	tir16-066

Bold = Simple Element, Blue = Complex Element

Occurrence	Element/Attribute	BII Business Term	Info req.
0 .. 1	cac:PartyName		
1 .. 1	-cbc:Name	Selling party name	tir16-065
0 .. 1	cac:Contact		
0 .. 1	-cbc:Name	Contact person name	tir16-067
0 .. 1	-cbc:Telephone	Contact telephone number	tir16-069
0 .. 1	-cbc:Telefax	Contact fax number	tir16-068
0 .. 1	-cbc:ElectronicMail	Contact email address	tir16-070
0 .. 1	cac:OriginatorCustomerParty		
1 .. 1	-cac:Party		
0 .. 1	-cac:PartyIdentification		
1 .. 1	-cbc:ID	Originating party identifier	tir16-032
0 .. 1	-cac:PartyName		
1 .. 1	-cbc:Name	Originating party name	tir16-031
0 .. 1	cac:Shipment		
1 .. 1	-cbc:ID	Shipment identifier	tir16-038
0 .. 1	-cbc:Information	Shipment description	tir16-039
0 .. 1	-cbc:GrossWeightMeasure	Shipment gross weight	tir16-074
0 .. 1	-cbc:GrossVolumeMeasure	Shipment gross volume	tir16-075
0 .. 1	-cbc:TotalTransportHandlingUnitQuantity	Total number of transport handling units	op-tir16-002
0 .. 1	cac:Consignment		
1 .. 1	-cbc:ID	Consignment identifier	tir16-040
0 .. 1	-cbc:Information	Vehicle description	tir16-077
0 .. 1	cac:CarrierParty		
0 .. 1	-cac:PartyName		
1 .. 1	-cbc:Name	Carrier name	tir16-076
0 .. 1	cac:Person		
1 .. 1	-cac:IdentityDocumentReference		
1 .. 1	-cbc:ID	Driver information	tir16-078
0 .. 1	-cbc:DocumentType	Driver identification document type	op-tir16-009
0 .. 1	cac:Delivery		
0 .. 1	-cbc:TrackingID	Delivery tracking identifier	tir16-041
0 .. 1	cac:EstimatedDeliveryPeriod		
0 .. 1	-cbc:StartDate	Period start date	tir16-042
0 .. 1	-cbc:StartTime	Period start time	tir16-043
0 .. 1	-cbc:EndDate	Period end date	tir16-044
0 .. 1	-cbc:EndTime	Period end time	tir16-045
0 .. 1	cac:Despatch		
0 .. 1	-cbc:ActualDespatchDate	Shipment dispatch date	tir16-072
0 .. 1	-cbc:ActualDespatchTime	Shipment dispatch time	tir16-073
0 .. 1	cac:DespatchAddress		
0 .. 1	-cbc:ID		
0 .. 1	-cbc:StreetName	Address line 1	op-tir16-003
0 .. 1	-cbc:AdditionalStreetName	Address line 2	op-tir16-004
0 .. 1	-cbc:CityName	City	op-tir16-005
0 .. 1	-cbc:PostalZone	Post code	op-tir16-006
0 .. 1	-cbc:CountrySubentity	Country subdivision	op-tir16-007
0 .. 1	cac:Country		
1 .. 1	-cbc:IdentificationCode	Country code	op-tir16-008
1 .. unbounded	cac:DespatchLine		
1 .. 1	-cbc:ID	Despatch line identifier	tir16-046
0 .. 1	-cbc:Note	Despatch line note	tir16-047
1 .. 1	-cbc:DeliveredQuantity	Delivered quantity	tir16-048
0 .. 1	-cbc:OutstandingQuantity	Outstanding quantity	tir16-049
0 .. 1	-cbc:OutstandingReason	Outstanding quantity reason	tir16-050

Bold = Simple Element, Blue = Complex Element

Occurrence	Element/Attribute	BII Business Term	Info req.
1 .. 1	cac:OrderLineReference		
1 .. 1	cbc:LineID	Order line reference	tir16-051
1 .. 1	cac:Item		
0 .. 1	cbc:Name	Item name	tir16-052
0 .. 1	cac:SellersItemIdentification		
1 .. 1	cbc:ID	Item sellers identifier	tir16-053
0 .. 1	cbc:ExtendedID	Item sellers extended identifier	tir16-054
0 .. 1	cac:StandardItemIdentification		
1 .. 1	cbc:ID	Item standard identifier	tir16-055
0 .. 1	cbc:ExtendedID	Item standard extended identifier	tir16-056
0 .. unbounded	cac:HazardousItem		
0 .. 1	cbc:UNDGCode	Haszardous item UNDG code	tir16-057
0 .. 1	cbc:HazardClassID	Haszardous hazard class Identifier	tir16-058
0 .. unbounded	cac:ItemInstance		
0 .. 1	cbc:ManufactureDate	Item manufactured date	tir16-079
0 .. 1	cbc:BestBeforeDate	Item best before date	tir16-080
0 .. 1	cbc:SerialID	Item serial numbers	tir16-083
0 .. 1	cac:LotIdentification		
0 .. 1	cbc:LotNumberID	Item batch number	tir16-082
0 .. 1	cbc:ExpiryDate	Item expiry date	tir16-081
0 .. 1	cac:Shipment		
1 .. 1	cbc:ID		
0 .. unbounded	cac:TransportHandlingUnit		
0 .. 1	cbc:ID	Handling unit identifier	tir16-061
0 .. 1	cbc:TransportHandlingUnitTypeCode	Handling unit type	tir16-085
0 .. 1	cbc:HazardousRiskIndicator	Handling unit hazardous indicator	tir16-062
0 .. 1	cbc:ShippingMarks	Handling unit shipping marks	tir16-064
0 .. unbounded	cac:MeasurementDimension		
1 .. 1	cbc:AttributeID		
0 .. 1	cbc:Measure	Handling unit gross weight Handling unit gross volume	tir16-086 tir16-087

Bold = Simple Element, Blue = Complex Element

Element/Attribute	Description	Usage
DespatchAdvice	Type DespatchAdviceType	
cbc:UBLVersionID	Occurence 1 .. 1 Type cbc:UBLVersionIDType XML Note Must be value "2.1".	
cbc:CustomizationID	Occurence 1 .. 1 Type cbc:CustomizationIDType Info req.ID tir16-002 XML Note Must be urn:www.cenbii.eu:transaction:biitrns016:ver1.0:extended:urn:www.peppol.eu:bis:peppol30a:ver1.0	Term name Customization identifier <i>Identifies the specification of content and rules that apply to the transaction.</i> Rules BII2-T16-R001 - A despatch advice MUST have a customization identifier
schemeID	Type xs:normalizedString Use optional	
cbc:ProfileID	Occurence 1 .. 1 Type cbc:ProfileIDType Info req.ID tir16-001 XML Note Must be urn:www.cenbii.eu:profile:bii30:ver2.0	Term name Profile identifier <i>Identifies the BII profile or business process context in which the transaction appears.</i> Rules BII2-T16-R002 - A despatch advice MUST have a profile identifier
schemeID	Type xs:normalizedString Use optional	
cbc:ID	Occurence 1 .. 1 Type cbc:IDType Info req.ID tir16-003 Bus req.ID tbr16-016	Term name Document identifier <i>An transaction instance must contain an identifier. The identifier enables positive referencing the document instance for various purposes including referencing between transactions that are part of the same process.</i> Rules BII2-T16-R003 - A despatch advice MUST have a document identifier
cbc:IssueDate	Occurence 1 .. 1 Type cbc:IssueDateType Info req.ID tir16-004 Bus req.ID tbr16-016 XML Note Date format CCYY-MM-DD	Term name Despatch advice issue date <i>The date when the despatch advice is issued.</i> Rules BII2-T16-R004 - A despatch advice MUST have a document issue date
cbc:IssueTime	Occurence 0 .. 1 Type cbc:IssueTimeType Info req.ID tir16-005 Bus req.ID tbr16-016 XML Note Date format HH:MM:SS	Term name Despatch advice issue time <i>The time when the despatch advice is issued.</i>

Element/Attribute	Description	Usage
cbc:Note	Occurence 0 .. 1 Type cbc:NoteType Info req.ID tir16-088 Bus req.ID tbr16-017	Term name Despatch note BII Usage A textual note for the despatch as whole.
cac:OrderReference	Occurence 0 .. 1 Type cac:OrderReferenceType	
cbc:ID	Occurence 1 .. 1 Type cbc:IDType Info req.ID tir16-006 Bus req.ID tbr16-003	Term name Order reference BII Usage Used to provide a reference to the buyers order on which the despatch is based. Rules BII2-T16-R005 - A despatch advice SHOULD have an order identifier
cac:DespatchSupplierParty	Occurence 1 .. 1 Type cac:SupplierPartyType	
cac:Party	Occurence 1 .. 1 Type cac:PartyType	
cbc:EndpointID	Occurence 0 .. 1 Type cbc:EndpointIDType Info req.ID tir16-071 Bus req.ID tbr16-004	Term name Electronic address identifier BII Usage A despatch advice may contain the despatching party electronic address identifier. The address can be of any format and the format should be identified in the message. Rules OP-T16-R005 - An Endpoint Identifier Scheme MUST be from the list of PEPPOL Party Identifiers.
schemeID	Type xs:normalizedString Use required	
schemeAgencyID	Type xs:normalizedString Use optional	
schemeAgencyName	Type xs:string Use optional	
cac:PartyIdentification	Occurence 0 .. 1 Type cac:PartyIdentificationType	
cbc:ID	Occurence 1 .. 1 Type cbc:IDType Info req.ID op-tir16-001 Bus req.ID tbr16-004	Term name Despatching party identifier BII Usage The identifier of the despatching party. Rules OP-T16-R006 - A Party Identifier Scheme MUST be from the list of PEPPOL Party Identifiers
schemeID	Type xs:normalizedString Use required	
schemeAgencyID	Type xs:normalizedString Use optional	
schemeAgencyName	Type xs:string Use optional	
cac:PartyName	Occurence 0 .. 1	

Element/Attribute	Description	Usage
cbc:Name	Type cac:PartyNameType Occurrence 1 .. 1 Type cbc:NameType Info req.ID tir16-007 Bus req.ID tbr16-004	Term name Despatching party name <i>The name of the despatching party</i> Rules BII2-T16-R007 - A Despatch party SHOULD have the Despatch party name
cac:Contact	Occurrence 0 .. 1 Type cac:ContactType	
cbc:Name	Occurrence 0 .. 1 Type cbc:NameType Info req.ID tir16-008 Bus req.ID tbr16-004	Term name Contact person name <i>The name of the contact person.</i>
cbc:Telephone	Occurrence 0 .. 1 Type cbc:TelephoneType Info req.ID tir16-012 Bus req.ID tbr16-004	Term name Contact telephone number <i>A phone number for the contact person. If the person has a direct number, this is that number.</i>
cbc:Telefax	Occurrence 0 .. 1 Type cbc:TelefaxType Info req.ID tir16-010 Bus req.ID tbr16-004	Term name Contact fax number <i>A fax number for the contact persons.</i>
cbc:ElectronicMail	Occurrence 0 .. 1 Type cbc:ElectronicMailType Info req.ID tir16-013 Bus req.ID tbr16-004	Term name Contact email address <i>The e-mail address for the contact person. If the person has a direct e-mail this is that email.</i>
cac:DeliveryCustomerParty	Occurrence 1 .. 1 Type cac:CustomerPartyType	
cac:Party	Occurrence 1 .. 1 Type cac:PartyType	
cbc:EndpointID	Occurrence 0 .. 1 Type cbc:EndpointIDType Info req.ID tir16-016 Bus req.ID tbr16-004	Term name Consignee party identifier <i>A despatch advice may contain the despatching party electronic address identifier. The address can be of any format and the format should be identified in the message.</i> Rules OP-T16-R005 - An Endpoint Identifier Scheme MUST be from the list of PEPPOL Party Identifiers.
schemeID	Type xs:normalizedString Use required	
schemeAgencyID	Type xs:normalizedString Use optional	
schemeAgencyName	Type xs:string	

Element/Attribute	Description	Usage
cac:PartyIdentification	<i>Use optional</i> Occurrence 0 .. 1 Type cac:PartyIdentificationType	
cbc:ID	Occurrence 1 .. 1 Type cbc:IDType Info req.ID tir16-015 Bus req.ID tbr16-005	Term name Consignee party identifier <i>The receiving party identifier.</i> Rules OP-T16-R006 - A Party Identifier Scheme MUST be from the list of PEPPOL Party Identifiers
schemeID	Type xs:normalizedString <i>Use required</i>	
schemeAgencyID	Type xs:normalizedString <i>Use optional</i>	
schemeAgencyName	Type xs:string <i>Use optional</i>	
cac:PartyName	Occurrence 0 .. 1 Type cac:PartyNameType	
cbc:Name	Occurrence 1 .. 1 Type cbc:NameType Info req.ID tir16-014 Bus req.ID tbr16-005	Term name Consignee party name <i>The name of the receiving party.</i> Rules BII2-T16-R009 - A consignee party SHOULD have the party name or a party identifier
cac:PostalAddress	Occurrence 0 .. 1 Type cac:AddressType	
cbc:ID	Occurrence 0 .. 1 Type cbc:IDType Info req.ID tir16-017 Bus req.ID tbr16-005	Term name Consignee party address identifier <i>An identifier for a specific address within a scheme of registered addresses. Identifying the address to where the items have been despatched.</i>
schemeID	Type xs:normalizedString <i>Use optional</i>	
schemeAgencyID	Type xs:normalizedString <i>Use optional</i>	
schemeAgencyName	Type xs:string <i>Use optional</i>	
cbc:StreetName	Occurrence 0 .. 1 Type cbc:StreetNameType Info req.ID tir16-018 Bus req.ID tbr16-012	Term name Address line 1 <i>The main address line in a postal address usually the street name and number.</i>
cbc:AdditionalStreetName	Occurrence 0 .. 1 Type cbc:AdditionalStreetNameType Info req.ID tir16-019 Bus req.ID tbr16-012	Term name Address line 2 <i>An additional address line in a postal address that can be used to give further details supplementing the main line. Common use are secondary house number in a complex or in a building.</i>

Element/Attribute	Description	Usage
cbc:CityName	<p>Occurence 0 .. 1</p> <p>Type cbc:CityNameType</p> <p>Info req.ID tir16-020</p> <p>Bus req.ID tbr16-012</p>	<p>Term name City</p> <p>Bill Usage <i>The common name of the city where the postal address is. The name is written in full rather than as a code.</i></p>
cbc:PostalZone	<p>Occurence 0 .. 1</p> <p>Type cbc:PostalZoneType</p> <p>Info req.ID tir16-021</p> <p>Bus req.ID tbr16-012</p>	<p>Term name Post code</p> <p>Bill Usage <i>The identifier for an addressable group of properties according to the relevant national postal service, such as a ZIP code or Post Code.</i></p>
cbc:CountrySubentity	<p>Occurence 0 .. 1</p> <p>Type cbc:CountrySubentityType</p> <p>Info req.ID tir16-022</p> <p>Bus req.ID tbr16-012</p>	<p>Term name Country subdivision</p> <p>Bill Usage <i>For specifying a region, county, state, province etc. within a country by using text.</i></p>
cac:Country	<p>Occurence 0 .. 1</p> <p>Type cac:CountryType</p>	
cbc:IdentificationCode	<p>Occurence 1 .. 1</p> <p>Type cbc:IdentificationCodeType</p> <p>Info req.ID tir16-023</p> <p>Bus req.ID tbr16-012</p>	<p>Term name Country code</p> <p>Bill Usage <i>The country where the address is. The country should always be given by using ISO code 3166 alpha 2</i></p>
listID	<p>Type xs:normalizedString</p> <p>Use optional</p>	<p>Rules OP-T16-R001- A country identification code MUST have a list identifier attribute "ISO3166-1:Alpha2".</p>
cac:DeliveryContact	<p>Occurence 0 .. 1</p> <p>Type cac:ContactType</p>	
cbc:Name	<p>Occurence 0 .. 1</p> <p>Type cbc:NameType</p> <p>Info req.ID tir16-024</p> <p>Bus req.ID tbr16-005</p>	<p>Term name Contacting details</p> <p>Bill Usage <i>The name of the contact person.</i></p>
cbc:Telephone	<p>Occurence 0 .. 1</p> <p>Type cbc:TelephoneType</p> <p>Info req.ID tir16-027</p> <p>Bus req.ID tbr16-005</p>	<p>Term name Contact telephone number</p> <p>Bill Usage <i>A phone number for the contact person. If the person has a direct number, this is that number.</i></p>
cbc:Telefax	<p>Occurence 0 .. 1</p> <p>Type cbc:TelefaxType</p> <p>Info req.ID tir16-026</p> <p>Bus req.ID tbr16-005</p>	<p>Term name Contact fax number</p> <p>Bill Usage <i>A fax number for the contact persons.</i></p>

Element/Attribute	Description	Usage
cbc:ElectronicMail	Occurence 0 .. 1 Type cbc:ElectronicMailType Info req.ID tir16-028 Bus req.ID tbr16-005	Term name Contact email address BII Usage <i>The e-mail address for the contact person. If the person has a direct e-mail this is that email.</i>
cac:BuyerCustomerParty	Occurence 0 .. 1 Type cac:CustomerPartyType	
cac:Party	Occurence 1 .. 1 Type cac:PartyType	
cac:PartyIdentification	Occurence 0 .. 1 Type cac:PartyIdentificationType	
cbc:ID	Occurence 1 .. 1 Type cbc:IDType Info req.ID tir16-030 Bus req.ID tbr16-006	Term name Buying party identifier BII Usage <i>The buying party identifier</i>
schemeID	Type xs:normalizedString Use required	
schemeAgencyID	Type xs:normalizedString Use optional	
schemeAgencyName	Type xs:string Use optional	
cac:PartyName	Occurence 0 .. 1 Type cac:PartyNameType	
cbc:Name	Occurence 1 .. 1 Type cbc:NameType Info req.ID tir16-029 Bus req.ID tbr16-006	Term name Buying party name BII Usage <i>The name of the buying party</i>
cac:SellerSupplierParty	Occurence 0 .. 1 Type cac:SupplierPartyType	
cac:Party	Occurence 1 .. 1 Type cac:PartyType	
cac:PartyIdentification	Occurence 0 .. 1 Type cac:PartyIdentificationType	
cbc:ID	Occurence 1 .. 1 Type cbc:IDType Info req.ID tir16-066 Bus req.ID tbr16-013	Term name Selling party identifier BII Usage <i>An identifier for the seller party.</i>
schemeID	Type xs:normalizedString Use required	
schemeAgencyID	Type xs:normalizedString Use optional	
schemeAgencyName	Type xs:string	
		Rules OP-T16-R006 - A Party Identifier Scheme MUST be from the list of PEPPOL Party Identifiers

Element/Attribute	Description	Usage
	<i>Use optional</i>	
cac:PartyName	Occurrence 0 .. 1 Type cac:PartyNameType	
cbc:Name	Occurrence 1 .. 1 Type cbc:NameType Info req.ID tir16-065 Bus req.ID tbr16-013	Term name Selling party name BII Usage <i>The seller party name.</i>
cac:Contact	Occurrence 0 .. 1 Type cac:ContactType	
cbc:Name	Occurrence 0 .. 1 Type cbc:NameType Info req.ID tir16-067 Bus req.ID tbr16-013	Term name Contact person name BII Usage <i>The name of the contact person.</i>
cbc:Telephone	Occurrence 0 .. 1 Type cbc:TelephoneType Info req.ID tir16-069 Bus req.ID tbr16-013	Term name Contact telephone number BII Usage <i>A phone number for the contact person. If the person has a direct number, this is that number.</i>
cbc:Telefax	Occurrence 0 .. 1 Type cbc:TelefaxType Info req.ID tir16-068 Bus req.ID tbr16-013	Term name Contact fax number BII Usage <i>A fax number for the contact persons.</i>
cbc:ElectronicMail	Occurrence 0 .. 1 Type cbc:ElectronicMailType Info req.ID tir16-070 Bus req.ID tbr16-013	Term name Contact email address BII Usage <i>The e-mail address for the contact person. If the person has a direct e-mail this is that email.</i>
cac:OriginatorCustomerParty	Occurrence 0 .. 1 Type cac:CustomerPartyType	
cac:Party	Occurrence 1 .. 1 Type cac:PartyType	
cac:PartyIdentification	Occurrence 0 .. 1 Type cac:PartyIdentificationType	
cbc:ID	Occurrence 1 .. 1 Type cbc:IDType Info req.ID tir16-032 Bus req.ID tbr16-004	Term name Originating party identifier BII Usage <i>The originator party identifier.</i>
schemeID	Type xs:normalizedString Use required	
schemeAgencyID	Type xs:normalizedString Use optional	Rules OP-T16-R006 - A Party Identifier Scheme MUST be from the list of PEPPOL Party Identifiers

Element/Attribute	Description	Usage
<ul style="list-style-type: none"> — <i>schemeAgencyName</i> 	<p>Type <i>xs:string</i> Use <i>optional</i></p>	
<ul style="list-style-type: none"> — cac:PartyName <ul style="list-style-type: none"> — cbc:Name 	<p>Occurence 0 .. 1 Type cac:PartyNameType</p> <p>Occurence 1 .. 1 Type cbc:NameType Info req.ID tir16-031 Bus req.ID tbr16-004</p>	<p>Term name Originating party name BII Usage <i>The originator party name.</i></p>
<ul style="list-style-type: none"> — cac:Shipment <ul style="list-style-type: none"> — cbc:ID — <i>schemeID</i> — <i>schemeAgencyID</i> — <i>schemeAgencyName</i> — cbc:Information — cbc:GrossWeightMeasure <ul style="list-style-type: none"> — <i>unitCode</i> — cbc:GrossVolumeMeasure <ul style="list-style-type: none"> — <i>unitCode</i> 	<p>Occurence 0 .. 1 Type cac:ShipmentType</p> <p>Occurence 1 .. 1 Type cbc:IDType Info req.ID tir16-038 Bus req.ID tbr16-002</p> <p>XML Note If no unique identifier is assigned to the shipment, use "NA".</p> <p>Type <i>xs:normalizedString</i> Use <i>optional</i></p> <p>Type <i>xs:normalizedString</i> Use <i>optional</i></p> <p>Type <i>xs:string</i> Use <i>optional</i></p> <p>Occurence 0 .. 1 Type cbc:InformationType Info req.ID tir16-039 Bus req.ID tbr16-002</p> <p>Occurence 0 .. 1 Type cbc:GrossWeightMeasureType Info req.ID tir16-074 Bus req.ID tbr16-015</p> <p>Type <i>xs:normalizedString</i> Use <i>required</i></p> <p>Occurence 0 .. 1 Type cbc:GrossVolumeMeasureType Info req.ID tir16-075 Bus req.ID tbr16-015</p> <p>Type <i>xs:normalizedString</i> Use <i>required</i></p>	<p>Term name Shipment identifier BII Usage <i>Identifies a shipment.</i></p> <p>Term name Shipment description BII Usage <i>Free-form text applying to a shipment. This element may contain notes or any other similar information that is not contained explicitly in another structure.</i></p> <p>Term name Shipment gross weight BII Usage <i>The total weight of the shipment including packaging, as dispatched from the despatching party.</i></p> <p>Term name Shipment gross volume BII Usage <i>The total volume of the shipment including packaging, as dispatched from the despatching party.</i></p>

Element/Attribute	Description	Usage
cbc:TotalTransportHandlingUnitQuantity	Occurence 0 .. 1 Type cbc:TotalTransportHandlingUnitQuantityType Info req.ID op-tir16-002	Term name Total number of transport handling units BII Usage <i>The total number of transport handling units in this despatch.</i>
cac:Consignment	Occurence 0 .. 1 Type cac:ConsignmentType	
cbc:ID	Occurence 1 .. 1 Type cbc:IDType Info req.ID tir16-040 Bus req.ID tbr16-002	Term name Consignment identifier BII Usage <i>An association to Consignment covering the shipment. Unique number assigned to goods, both for import and export.</i>
schemeID	Type xs:normalizedString Use optional	
schemeAgencyID	Type xs:normalizedString Use optional	
schemeAgencyName	Type xs:string Use optional	
cbc:Information	Occurence 0 .. 1 Type cbc:InformationType Info req.ID tir16-077 Bus req.ID tbr16-014	Term name Vehicle description BII Usage <i>Description and/or identification of the vehicle that transports the despatched shipment.</i>
cac:CarrierParty	Occurence 0 .. 1 Type cac:PartyType	
cac:PartyName	Occurence 0 .. 1 Type cac:PartyNameType	
cbc:Name	Occurence 1 .. 1 Type cbc:NameType Info req.ID tir16-076 Bus req.ID tbr16-014	Term name Carrier name BII Usage <i>The name of the carrier that handles the delivery of the despatched shipment.</i>
cac:Person	Occurence 0 .. 1 Type cac:PersonType	
cac:IdentityDocumentReference	Occurence 1 .. 1 Type cac:DocumentReferenceType	
cbc:ID	Occurence 1 .. 1 Type cbc:IDType Info req.ID tir16-078 Bus req.ID tbr16-014	Term name Driver information BII Usage <i>Identification about the driver of the vehicle that delivers the despatched shipment.</i>
cbc:DocumentType	Occurence 0 .. 1 Type cbc:DocumentTypeType Info req.ID op-tir16-009	Term name Driver identification document type BII Usage <i>The type of document used for identifying the driver, expressed in text.</i>
cac:Delivery	Occurence 0 .. 1	

Element/Attribute	Description	Usage
cbc:TrackingID	Type cac:DeliveryType Occurrence 0 .. 1 Type cbc:TrackingIDType Info req.ID tir16-041 Bus req.ID tbr16-002	Term name Delivery tracking identifier BII Usage <i>Used to provide a tracking id for delivery e.g. UPS or postal.</i>
cac:EstimatedDeliveryPeriod	Occurrence 0 .. 1 Type cac:PeriodType	
cbc:StartDate	Occurrence 0 .. 1 Type cbc:StartDateType Info req.ID tir16-042 Bus req.ID tbr16-002	Term name Period start date BII Usage <i>The start date of the period</i>
cbc:StartTime	Occurrence 0 .. 1 Type cbc:StartTimeType Info req.ID tir16-043 Bus req.ID tbr16-002	Term name Period start time BII Usage <i>The start time of the period.</i>
cbc:EndDate	Occurrence 0 .. 1 Type cbc:EndDateType Info req.ID tir16-044 Bus req.ID tbr16-002	Term name Period end date BII Usage <i>The end date of the period.</i>
cbc:EndTime	Occurrence 0 .. 1 Type cbc:EndTimeType Info req.ID tir16-045 Bus req.ID tbr16-002	Term name Period end time BII Usage <i>The end time of the period.</i>
cac:Despatch	Occurrence 0 .. 1 Type cac:DespatchType	
cbc:ActualDespatchDate	Occurrence 0 .. 1 Type cbc:ActualDespatchDateType Info req.ID tir16-072 Bus req.ID tbr16-002	Term name Shipment dispatch date BII Usage <i>The actual or expected date when the shipment was despatched from the despatching party.</i>
cbc:ActualDespatchTime	Occurrence 0 .. 1 Type cbc:ActualDespatchTimeType Info req.ID tir16-073 Bus req.ID tbr16-002	Term name Shipment dispatch time BII Usage <i>The actual or expected time when the shipment was despatched from the despatching party.</i>
cac:DespatchAddress	Occurrence 0 .. 1 Type cac:AddressType	
cbc:ID	Occurrence 0 .. 1 Type cbc:IDType	

Element/Attribute	Description	Usage
cbc:StreetName	<p>Occurence 0 .. 1 Type cbc:StreetNameType Info req.ID op-tir16-003</p>	<p>Term name Address line 1 BII Usage <i>The main address line in a postal address usually the street name and number.</i></p>
cbc:AdditionalStreetName	<p>Occurence 0 .. 1 Type cbc:AdditionalStreetNameType Info req.ID op-tir16-004</p>	<p>Term name Address line 2 BII Usage <i>An additional address line in a postal address that can be used to give further details supplementing the main line. Common use are secondary house number in a complex or in a building.</i></p>
cbc:CityName	<p>Occurence 0 .. 1 Type cbc:CityNameType Info req.ID op-tir16-005</p>	<p>Term name City BII Usage <i>The common name of the city where the postal address is. The name is written in full rather than as a code.</i></p>
cbc:PostalZone	<p>Occurence 0 .. 1 Type cbc:PostalZoneType Info req.ID op-tir16-006</p>	<p>Term name Post code BII Usage <i>The identifier for an addressable group of properties according to the relevant national postal service, such as a ZIP code or Post Code.</i></p>
cbc:CountrySubentity	<p>Occurence 0 .. 1 Type cbc:CountrySubentityType Info req.ID op-tir16-007</p>	<p>Term name Country subdivision BII Usage <i>For specifying a region, county, state, province etc. within a country by using text.</i></p>
cac:Country	<p>Occurence 0 .. 1 Type cac:CountryType</p>	
cbc:IdentificationCode	<p>Occurence 1 .. 1 Type cbc:IdentificationCodeType Info req.ID op-tir16-008</p>	<p>Term name Country code BII Usage <i>The country where the address is. The country should always be given by using ISO code 3166 alpha 2</i></p> <p>Rules OP-T16-R001- A country identification code MUST have a list identifier attribute "ISO3166-1:Alpha2".</p>
listID	<p>Type xs:normalizedString Use optional</p>	
cac:DespatchLine	<p>Occurence 1 .. unbounded Type cac:DespatchLineType</p>	
cbc:ID	<p>Occurence 1 .. 1 Type cbc:IDType Info req.ID tir16-046 Bus req.ID tbr16-007</p>	<p>Term name Despatch line identifier BII Usage <i>A identifier for the individual line in the despatch advice.</i></p> <p>Rules BII2-T16-R013 - Each despatch advice line MUST have a despatch line identifier that is unique within the despatch advice</p>

Element/Attribute	Description	Usage
cbc:Note	Occurence 0 .. 1 Type cbc:NoteType Info req.ID tir16-047 Bus req.ID tbr16-007	Term name Despatch line note BII Usage <i>General note regarding the despatch advice line. Free-form text applying to the Despatch Line. This element may contain notes or any other similar information that is not contained explicitly in another structure.</i>
cbc:DeliveredQuantity	Occurence 1 .. 1 Type cbc:DeliveredQuantityType Info req.ID tir16-048 Bus req.ID tbr16-007	Term name Delivered quantity BII Usage <i>The quantity that is despatched in the line.</i> Rules BII2-T16-R017 - Each despatch advice line SHOULD have a delivered quantity BII2-T16-R019 - Each despatch advice line delivered quantity MUST not be negative BII2-T16-R020 - Each despatch advice line delivered quantity SHOULD have an associated unit of measure OP-T16-R002 - A unit code attribute MUST have a unit code list identifier attribute "UNECERec20"
<i>unitCode</i>	Type <i>xs:normalizedString</i> Use <i>optional</i>	
<i>unitCodeListID</i>	Type <i>xs:normalizedString</i> Use <i>optional</i>	
<i>unitCodeListAgencyID</i>	Type <i>xs:normalizedString</i> Use <i>optional</i>	
<i>unitCodeListAgencyName</i>	Type <i>xs:string</i> Use <i>optional</i>	
cbc:OutstandingQuantity	Occurence 0 .. 1 Type cbc:OutstandingQuantityType Info req.ID tir16-049 Bus req.ID tbr16-007 XML Note If the delivered quantity is less than the ordered quantity, and there will be no more shipment on this order line, the OutstandingQuantity shall be 0.	Term name Outstanding quantity BII Usage <i>The quantity outstanding (which will follow in a later shipment).</i> Rules OP-T16-R002 - A unit code attribute MUST have a unit code list identifier attribute "UNECERec20"
<i>unitCode</i>	Type <i>xs:normalizedString</i> Use <i>optional</i>	
<i>unitCodeListID</i>	Type <i>xs:normalizedString</i> Use <i>optional</i>	
<i>unitCodeListAgencyID</i>	Type <i>xs:normalizedString</i> Use <i>optional</i>	
<i>unitCodeListAgencyName</i>	Type <i>xs:string</i> Use <i>optional</i>	

Element/Attribute	Description	Usage
cbc:OutstandingReason	<p>Occurence 0 .. 1</p> <p>Type cbc:OutstandingReasonType</p> <p>Info req.ID tir16-050</p> <p>Bus req.ID tbr16-007</p>	<p>Term name Outstanding quantity reason <i>The reason for the outstanding quantity.</i></p> <p>Rules BI12-T16-R021 - An outstanding quantity reason SHOULD be provided if the despatch line contains an outstanding quantity</p>
cac:OrderLineReference	<p>Occurence 1 .. 1</p> <p>Type cac:OrderLineReferenceType</p>	
cbc:LineID	<p>Occurence 1 .. 1</p> <p>Type cbc:LineIDType</p> <p>Info req.ID tir16-051</p> <p>Bus req.ID tbr16-007</p>	<p>Term name Order line reference <i>To uniquely identify the line of the order that is being despatched.</i></p>
	<p>XML Note If no order line reference exists, use dummy value "NA"</p>	
cac:Item	<p>Occurence 1 .. 1</p> <p>Type cac:ItemType</p>	
cbc:Name	<p>Occurence 0 .. 1</p> <p>Type cbc:NameType</p> <p>Info req.ID tir16-052</p> <p>Bus req.ID tbr16-008</p>	<p>Term name Item name <i>A short name for an item.</i></p> <p>Rules BI12-T16-R016 - Each despatch advice line MUST have an item identifier and/or an item name</p>
	<p>XML Note At least one of Name or Item Identifier must be used.</p>	
cac:SellersItemIdentification	<p>Occurence 0 .. 1</p> <p>Type cac:ItemIdentificationType</p>	
cbc:ID	<p>Occurence 1 .. 1</p> <p>Type cbc:IDType</p> <p>Info req.ID tir16-053</p> <p>Bus req.ID tbr16-008</p>	<p>Term name Item sellers identifier <i>The sellers identifier for the item.</i></p> <p>Rules BI12-T16-R016 - Each despatch advice line MUST have an item identifier and/or an item name</p>
	<p>XML Note Normally only one of SellersItemIdentification and StandardItemIdentification is used.</p>	
cbc:ExtendedID	<p>Occurence 0 .. 1</p> <p>Type cbc:ExtendedIDType</p> <p>Info req.ID tir16-054</p> <p>Bus req.ID tbr16-008</p>	<p>Term name Item sellers extended identifier <i>An extended identifier for the item that identifies the item with specific properties, e.g., Item 123 = Chair / Item 123 Ext 45 = brown chair.</i></p>
cac:StandardItemIdentification	<p>Occurence 0 .. 1</p> <p>Type cac:ItemIdentificationType</p>	
cbc:ID	<p>Occurence 1 .. 1</p> <p>Type cbc:IDType</p> <p>Info req.ID tir16-055</p> <p>Bus req.ID tbr16-008</p>	<p>Term name Item standard identifier <i>A item identifier based on a registered schema.</i></p> <p>Rules BI12-T16-R016 - Each despatch advice line MUST have an item identifier and/or an item name BI12-T16-R018 - An item standard identifier MUST have an identification schema (e.g. GTIN)</p>
	<p>XML Note Normally only one of SellersItemIdentification and StandardItemIdentification is used.</p>	

Element/Attribute	Description	Usage
<ul style="list-style-type: none"> — <i>schemeID</i> 	<p>Type <i>xs:normalizedString</i> Use <i>optional</i></p>	
<ul style="list-style-type: none"> — <i>schemeAgencyID</i> 	<p>Type <i>xs:normalizedString</i> Use <i>optional</i></p>	
<ul style="list-style-type: none"> — <i>schemeAgencyName</i> 	<p>Type <i>xs:string</i> Use <i>optional</i></p>	
<ul style="list-style-type: none"> — cbc:ExtendedID 	<p>Occurrence 0 .. 1 Type <i>cbc:ExtendedIDType</i> Info req.ID <i>tir16-056</i> Bus req.ID <i>tbr16-008</i></p>	<p>Term name Item standard extended identifier BII Usage <i>with specific properties, e.g., Item 123 = Chair / Item 123 Ext 45 = brown chair.</i></p>
<ul style="list-style-type: none"> — cac:HazardousItem 	<p>Occurrence 0 .. unbounded Type <i>cac:HazardousItemType</i></p>	
<ul style="list-style-type: none"> — cbc:UNDGCode 	<p>Occurrence 0 .. 1 Type <i>cbc:UNDGCodeType</i> Info req.ID <i>tir16-057</i> Bus req.ID <i>tbr16-009</i></p>	<p>Term name Hazardous item UNDG code BII Usage <i>The identifier assigned to transportable hazardous goods by the United Nations, expressed as a code.</i></p> <p>Rules <i>OP-T16-R003 - A UNDG code MUST have a list identifier attribute "UNCL8273"</i></p>
<ul style="list-style-type: none"> — <i>listID</i> 	<p>Type <i>xs:normalizedString</i> Use <i>optional</i></p>	
<ul style="list-style-type: none"> — <i>listAgencyID</i> 	<p>Type <i>xs:normalizedString</i> Use <i>optional</i></p>	
<ul style="list-style-type: none"> — <i>listAgencyName</i> 	<p>Type <i>xs:string</i> Use <i>optional</i></p>	
<ul style="list-style-type: none"> — <i>listVersionID</i> 	<p>Type <i>xs:normalizedString</i> Use <i>optional</i></p>	
<ul style="list-style-type: none"> — <i>name</i> 	<p>Type <i>xs:string</i> Use <i>optional</i></p>	
<ul style="list-style-type: none"> — cbc:HazardClassID 	<p>Occurrence 0 .. 1 Type <i>cbc:HazardClassIDType</i> Info req.ID <i>tir16-058</i> Bus req.ID <i>tbr16-009</i></p>	<p>Term name Hazardous hazard class Identifier BII Usage <i>Identifies a hazard class applicable to dangerous goods as defined by the relevant regulation authority, such as the IMDG Class Number of the SOLAS Convention of IMO and the ADR/RID Class Number for the road/rail environment.</i></p>
<ul style="list-style-type: none"> — <i>schemeID</i> 	<p>Type <i>xs:normalizedString</i> Use <i>optional</i></p>	
<ul style="list-style-type: none"> — <i>schemeAgencyID</i> 	<p>Type <i>xs:normalizedString</i> Use <i>optional</i></p>	
<ul style="list-style-type: none"> — <i>schemeAgencyName</i> 	<p>Type <i>xs:string</i> Use <i>optional</i></p>	
<ul style="list-style-type: none"> — cac:ItemInstance 	<p>Occurrence 0 .. unbounded Type <i>cac:ItemInstanceType</i></p>	

Element/Attribute	Description	Usage
cbc:ManufactureDate	Occurence 0 .. 1 Type cbc:ManufactureDateType Info req.ID tir16-079 Bus req.ID tbr16-008	Term name Item manufactured date BII Usage <i>The manufacturing date of all items listed in this despatch line.</i>
cbc:BestBeforeDate	Occurence 0 .. 1 Type cbc:BestBeforeDateType Info req.ID tir16-080 Bus req.ID tbr16-008	Term name Item best before date BII Usage <i>The best before date of all items listed in this despatch line.</i>
cbc:SerialID	Occurence 0 .. 1 Type cbc:SerialIDType Info req.ID tir16-083 Bus req.ID tbr16-008	Term name Item serial numbers BII Usage <i>Serial numbers for items listed in the despatch line.</i>
<i>schemeID</i>	Type <i>xs:normalizedString</i> Use <i>optional</i>	
<i>schemeAgencyID</i>	Type <i>xs:normalizedString</i> Use <i>optional</i>	
<i>schemeAgencyName</i>	Type <i>xs:string</i> Use <i>optional</i>	
cac:LotIdentification	Occurence 0 .. 1 Type cac:LotIdentificationType	
cbc:LotNumberID	Occurence 0 .. 1 Type cbc:LotNumberIDType Info req.ID tir16-082 Bus req.ID tbr16-008	Term name Item batch number BII Usage <i>The batch number that applies to all items in the despatch line.</i>
<i>schemeID</i>	Type <i>xs:normalizedString</i> Use <i>optional</i>	
<i>schemeAgencyID</i>	Type <i>xs:normalizedString</i> Use <i>optional</i>	
<i>schemeAgencyName</i>	Type <i>xs:string</i> Use <i>optional</i>	
cbc:ExpiryDate	Occurence 0 .. 1 Type cbc:ExpiryDateType Info req.ID tir16-081 Bus req.ID tbr16-008	Term name Item expiry date BII Usage <i>The expiry date of all items listed in this despatch line. The expiry date indicates that the items should not be used after this date.</i>
cac:Shipment	Occurence 0 .. 1 Type cac:ShipmentType	

Element/Attribute	Description	Usage
cbc:ID	Occurence 1 .. 1 Type cbc:IDType XML Note Shipment identifier is only identified on header level. On line level use "NA".	
schemeID	Type xs:normalizedString Use optional	
schemeAgencyID	Type xs:normalizedString Use optional	
schemeAgencyName	Type xs:string Use optional	
cac:TransportHandlingUnit	Occurence 0 .. unbounded Type cac:TransportHandlingUnitType	
cbc:ID	Occurence 0 .. 1 Type cbc:IDType Info req.ID tir16-061 Bus req.ID tbr16-010	Term name Handling unit identifier Bill Usage Identifies the transport handling unit.
schemeID	Type xs:normalizedString Use optional	
schemeAgencyID	Type xs:normalizedString Use optional	
schemeAgencyName	Type xs:string Use optional	
cbc:TransportHandlingUnitTypeCode	Occurence 0 .. 1 Type cbc:TransportHandlingUnitTypeCodeType Info req.ID tir16-085 Bus req.ID tbr16-010	Term name Handling unit type Bill Usage The type of packaging that represent the handling unit, such as box, pallet, container etc. Rules OP-T16-R004 - A transport handling unit type code MUST have a list identifier attribute "UNECERec21".
listID	Type xs:normalizedString Use optional	
listAgencyID	Type xs:normalizedString Use optional	
listAgencyName	Type xs:string Use optional	
listVersionID	Type xs:normalizedString Use optional	
cbc:HazardousRiskIndicator	Occurence 0 .. 1 Type cbc:HazardousRiskIndicatorType Info req.ID tir16-062 Bus req.ID tbr16-010	Term name Handling unit hazardous indicator Bill Usage Indicates whether the shipment contains hazardous materials.

Element/Attribute	Description	Usage
cbc:ShippingMarks	Occurence 0 .. 1 Type cbc:ShippingMarksType Info req.ID tir16-064 Bus req.ID tbr16-010	Term name Handling unit shipping marks BII Usage <i>Free-form description of the marks and numbers on a transport unit or package.</i>
cac:MeasurementDimension	Occurence 0 .. unbounded Type cac:DimensionType	
cbc:AttributeID	Occurence 1 .. 1 Type cbc:AttributeIDType XML Note AttributeID should be set to code "AAB" for Unit gross weight and "AAW" for Gross volume	
schemeID	Type xs:normalizedString Use optional	
schemeAgencyID	Type xs:normalizedString Use optional	
schemeAgencyName	Type xs:string Use optional	
cbc:Measure	Occurence 0 .. 1 Type cbc:MeasureType Info req.ID tir16-086 tir16-087 Bus req.ID tbr16-010 tbr16-010	Term name Handling unit gross weight Handling unit gross volume BII Usage <i>Handling gross weight, including packaging as despatched by despatching party.</i> <i>Handling gross volume, including packaging as despatched by despatching party.</i> Rules OP-T16-R002 - A unit code attribute MUST have a unit code list identifier attribute "UNECERec20" The handling unit measure AttributeID MUST be of value "AAB" for Unit gross weight or "AAW" for Gross volume
unitCode	Type xs:normalizedString Use required	

Appendices

Appendix A – Example XML instance document

Appendix B – Conformance Statement towards CENBII