

# Specification



**Project Acronym:** PEPPOL  
**Grant Agreement number:** 224974  
**Project Title:** Pan-European Public Procurement Online




---

## PEPPOL Business Interoperability Specifications

# Criteria Template BIS



**Version:** 1.0  
**Status:** Work in progress

---

**Authors:** Arianna Brutti  
 Daniel Reiser




---

<b>Project co-funded by the European Commission within the ICT Policy Support Programme</b>		
<b>Dissemination Level</b>		
<b>P</b>	Public	<b>X</b>
<b>C</b>	Confidential, only for members of the consortium and the Commission Services	

## Revision History

Version	Date	Editor	Organization	Description
0.1	22.02.2012	Arianna Brutti	InfoCamere	Table of contents
0.2	01.03.2012	Arianna Brutti	InfoCamere	Initial inputs
0.3	20.04.2012	Arianna Brutti	InfoCamere	Editing chapters 2, 5, 7, 8, A
0.4	30.05.2012	Daniel Reiser	UKL	Editing chapters 2, 3
0.5	01.06.2012	Arianna Brutti	InfoCamere	Editing chapters 3.2, 4, 5.1, 5.2, 5.3
0.6	25.06.2012	Arianna Brutti	InfoCamere	Editing chapters 5.2, A
0.7	09.08.2012	Arianna Brutti	InfoCamere	Editing chapters 6
0.8	10.08.2012	Arianna Brutti	InfoCamere	Editing chapters 6
0.9	13.08.2012	Ansgar Mondorf Arianna Brutti	UKL InfoCamere	Revision of chapter 6
1.0	15.08.2012	Ansgar Mondorf	UKL	Final Editing

### Statement of originality

This deliverable contains original unpublished work except where clearly indicated otherwise. Acknowledgement of previously published material and of the work of others has been made through appropriate citation, quotation or both.

### Statement of copyright



This deliverable is released under the terms of the **Creative Commons Licence** accessed through the following link: <http://creativecommons.org/licenses/by/3.0/>.

In short, it is free to

**Share** — to copy, distribute and transmit the work

**Remix** — to adapt the work

Under the following conditions

**Attribution** — You must attribute the work in the manner specified by the author or licensor (but not in any way that suggests that they endorse you or your use of the work).



## Contributors

### Organisations

Adetef: Ministry of Economy, Finance and Employment, France, <http://www.minefe.gouv.fr/>

InfoCamere, Italy, <http://www.infocamere.it/>

PEPPOL.AT: Federal Ministry of Finance, Austria, <http://www.bmf.gv.at/>

UPRC: University of Piraeus, Greece <http://www.unipi.gr/>

UKL: University of Koblenz-Landau, Germany, <http://www.uni-koblenz.de/agvinf/>

### Persons

Arianna Brutti, InfoCamere, Italy

Daniel Reiser, UKL, Germany

Ansgar Mondorf, UKL (contributor)

Jerry Dimitriou, UPRC, Greece (contributor)

Paola Fumiani, InfoCamere, Italy (contributor)

Wolfgang Groiss, PEPPOL.AT, Austria (contributor)

Doris Ipsmiller, PEPPOL.AT, Austria (contributor)

Lefteris Leontaridis, UPRC, Greece (contributor)

Piero Milani, InfoCamere, Italy (contributor)

Ansgar Mondorf, UKL, Germany (contributor)

Panagiotis Nicolaou, UPRC, Greece (contributor)

Andriana Prentza, UPRC, Greece (contributor)

Markus Schett, PEPPOL.AT, Austria (contributor)

Silke Weiß, PEPPOL.AT, Austria (contributor)

Maria A. Wimmer, UKL, Germany (editor, contributor)

## Table of Contents

<b>1</b>	<b>Introduction .....</b>	<b>6</b>
1.1	Audience .....	6
1.2	PEPPOL BIS overview .....	6
1.3	Criteria Template BIS .....	8
1.3.1	Scope.....	8
1.3.2	Summary .....	10
1.3.3	Benefits.....	10
1.3.4	Status.....	11
1.4	References.....	11
<b>2</b>	<b>Legal interoperability.....</b>	<b>12</b>
2.1	EU Directive .....	12
2.2	Taxonomy of the term Evidences .....	16
2.3	Legal mappings of relevant national procurement regulations and European regulation requirements .....	17
2.4	National requirements.....	18
<b>3</b>	<b>Organizational - Organization/Business Interoperability.....</b>	<b>19</b>
3.1	Organizational scope .....	19
3.2	Business requirements .....	21
<b>4</b>	<b>Organizational - Process Interoperability.....</b>	<b>24</b>
4.1	Process model .....	24
4.2	Collaboration business rules.....	25
<b>5</b>	<b>Semantic Interoperability .....</b>	<b>26</b>
5.1	Concept database.....	26
5.2	Transaction Data Model.....	26
5.3	Validation rules .....	28
5.3.1	Validation rules from VCD concept database 2.0.....	28
5.4	Identifiers .....	29
5.5	Code lists .....	30
<b>6</b>	<b>Technical Interaction Interoperability – Process and Semantic Implementation.....</b>	<b>32</b>
6.1	Example XML Implementation.....	32
6.1.1	A request for qualification example .....	32
6.1.2	Criteria Template 2.0.0 XML File.....	34
6.2	Technical validation artefacts .....	44
<b>7</b>	<b>Technical Interaction Interoperability – eSignature Validation .....</b>	<b>45</b>

<b>8</b>	<b>Technical Interaction Interoperability - Transport</b> .....	<b>46</b>
8.1	Sending Criteria Template through PEPPOL Transport Infrastructure .....	46
<b>A.</b>	<b>Transactions data models</b> .....	<b>47</b>
i.	<i>Criteria Template</i> .....	47



# 1 Introduction

This Business Interoperability Specification (BIS) has been realized within the PEPPOL project. It provides a set of specifications for implementing a PEPPOL business process. The document is concerned with clarifying requirements for ensuring interoperability of pan-European Public eProcurement and provides guidelines for supporting these requirements and how to implement them.

## 1.1 Audience

The audience for this document is organizations, and/or ICT-suppliers, wishing to be PEPPOL enabled for the electronic exchange of structured information about criteria selected/requested by a Contracting Authority as part of a Call for Tender. These may include the following PEPPOL stakeholders:

- ▶▶ PEPPOL Community Governance
- ▶▶ Contracting Authorities
- ▶▶ Economic Operators
- ▶▶ ICT Providers
- ▶▶ Service Providers

In terms of roles it is addressed to:

- ▶▶ Business Experts
- ▶▶ ICT Architects
- ▶▶ ICT Developers
- ▶▶ ICT Governing participants

## 1.2 PEPPOL BIS overview

A PEPPOL BIS (Business Interoperability Specification) is a set of formal requirements for ensuring the interoperable exchange of documents in a pan-European Public eProcurement scenario.

The specifications enable any company to issue electronic documents that fulfil legal and business processing requirements within the European Union and the EEA. It supports a subset of information that is used by most industries and enables users to issue documents (invoices, orders, etc...) that are valid for cross border trade within the European Union and the EEA<sup>1</sup>. It does not support requirements that are specific to certain industries or may be required in other areas.

A PEPPOL BIS can be seen as part of a standardised communication agreement that deals with:

---

<sup>1</sup> EEA is the European Economic Area. Current members are Iceland, Liechtenstein and Norway.

- ▶▶ sequence of document in scope;
- ▶▶ content of documents (data elements);
- ▶▶ business rules that govern the exchange.

It aims to enable the trading parties to make their business transactions without a prior or bi-lateral agreement or setup.

Starting from the European Interoperability Framework 2.0<sup>2</sup>, PEPPOL identifies 6 interoperability layers (Figure 1); the BIS specification detects and describes the set of interoperability requirements at each level

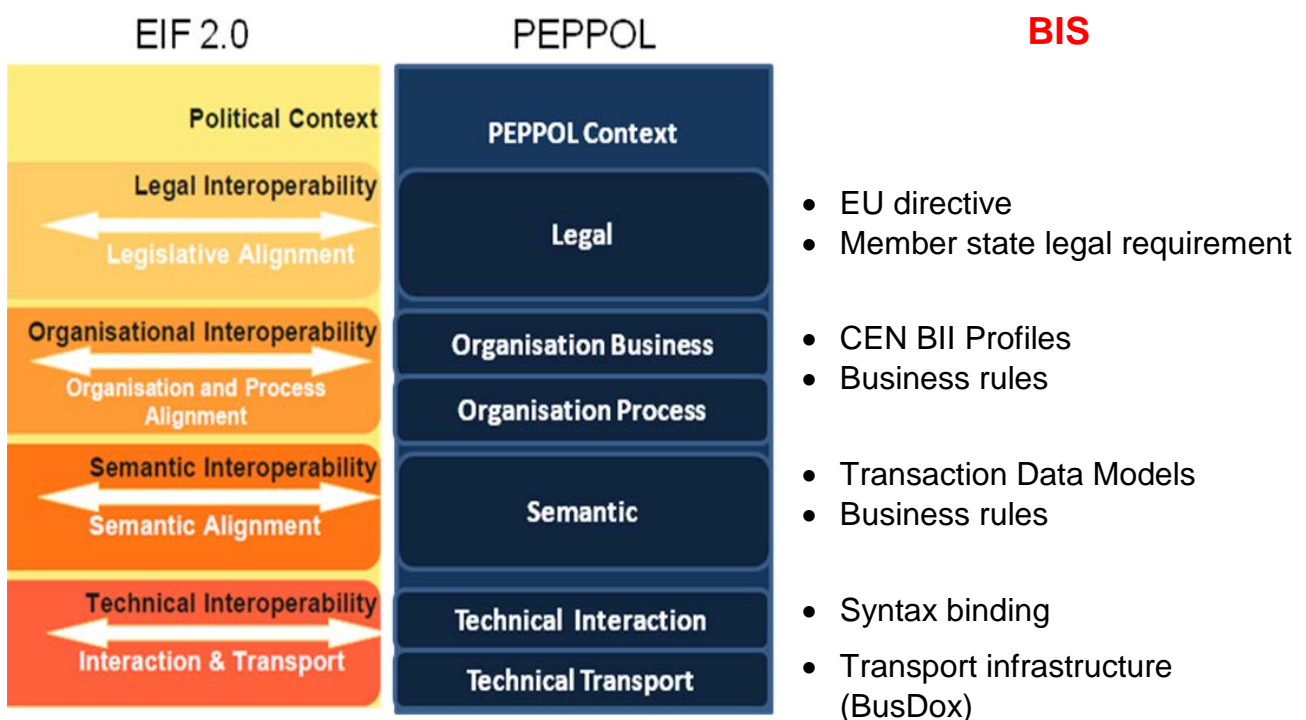


Figure 1 PEPPOL's Interoperability Framework

- ▶▶ **Legal:** identifies legal requirements, setting the legal scope of the specification both European and national level.
- ▶▶ **Organisation business:** starting from a CEN ISSS WS/BII Profile [CEN\_BII], it identifies business requirements, setting the Organization/Business scope of the specification.
- ▶▶ **Organisation process:** defines the choreography of the business processes covered, i.e. a detailed description of the way the business partners collaborate, play their respective roles and share

<sup>2</sup> [http://europa.eu/index\\_en.htm](http://europa.eu/index_en.htm)

responsibilities to achieve mutually agreed goals with the support of their respective information systems.

- ▶▶ **Semantic:** defines:
  - ▶ the electronic business transactions exchanged as part of the business process and the sequence in which these transactions are exchanged;
  - ▶ the business rules governing the execution of that business process, as well as any constraints on information elements used in the transaction data models;
  - ▶ the information content of the electronic business transactions exchanged by referencing a common data model for each of the business transactions.
- ▶▶ **Technical interaction:** guides the technical implementation of the business specifications and semantic specifications. In particular, it states the bounding between the common data model and a specific syntax (e.g. UBL).
- ▶▶ **Technical transport:** states the relationships with PEPPOL e-Signature [PEPPO\_Sign] and PEPPOL Transport Infrastructure [PEPPO\_Trans]..

In order to comply with a PEPPOL BIS, it is necessary to comply with each interoperability layer. Conformance with PEPPOL BIS specifications is defined in terms of document instance. A document must conform to series of specifications and business rules that apply to the content.

## 1.3 Criteria Template BIS

### 1.3.1 Scope

The PEPPOL Criteria Template BIS is intended to support the pre-awarding phase of a tendering process involving any Contracting Authority and any Economic Operator in any European country.

It supports the Contracting Authority in: a) defining the suggested and/or requested criteria in an interoperable electronic data format; b) publishing it as part of a Call for Tender.

Actually PEPPOL has defined two architectural approaches for supporting the Contracting Authorities in creating a Criteria Template and a third one is under evaluation. All of them are based on the implementation of a Criteria Editor functionality that can be provided as:

- ▶▶ central component with local service provision for countries that do not have a national system to provide Criteria Editor functionality (*Figure 2*);
- ▶▶ decentred component with central service provision by providing a system-interface to the EVS (*Figure 3*);
- ▶▶ (under evaluation) as decentred component with local service provision.

In any case the Criteria Editor functionality is fully compliant to this BIS specification.



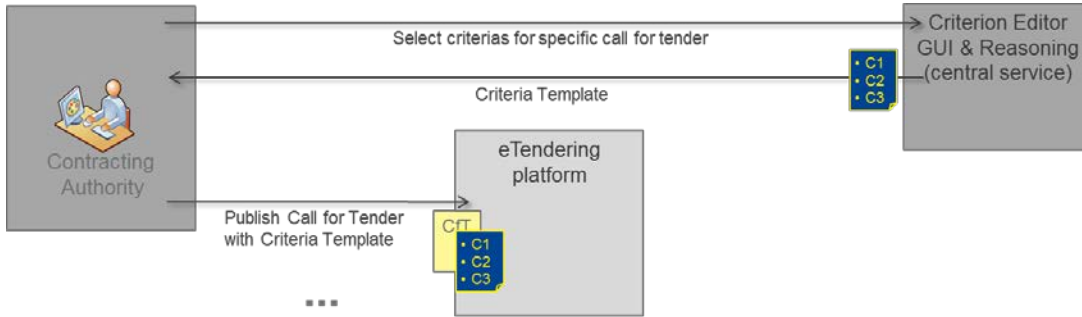


Figure 2 Criteria Editor with central GUI and reasoning

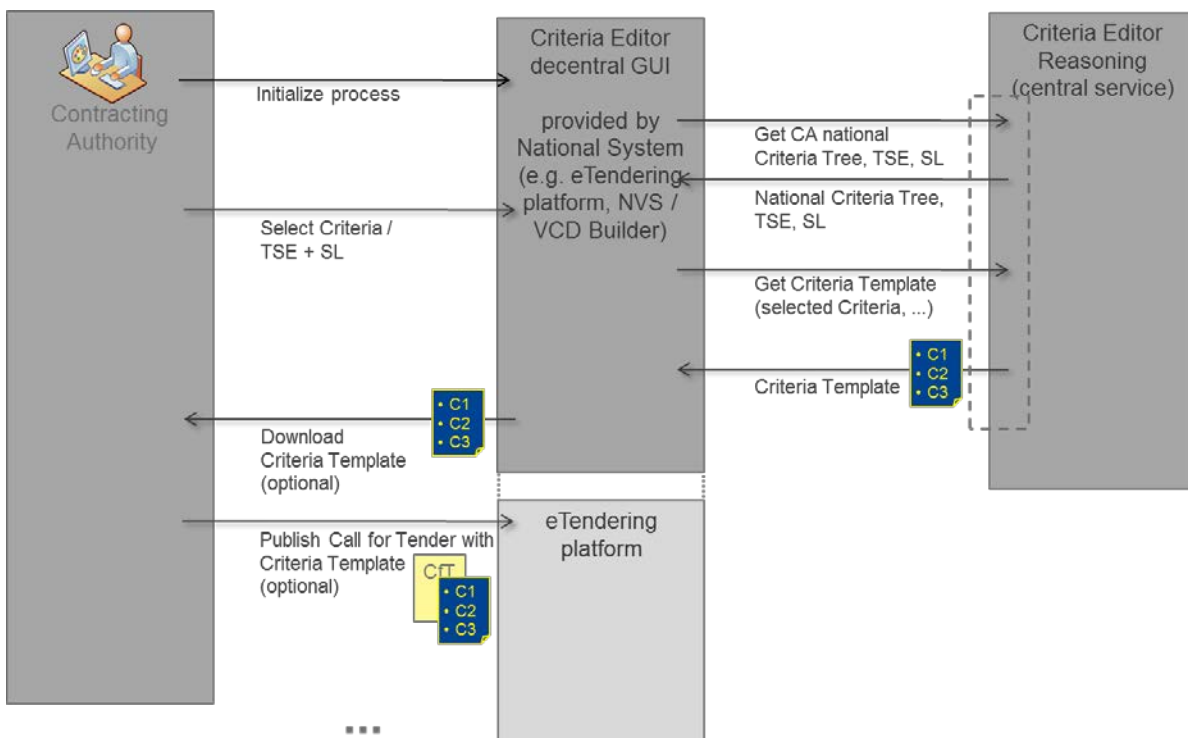


Figure 3 Criterion Editor with local GUI and reasoning as a service

The intended scope for this BIS is:

- ▶▶ B2G
- ▶▶ Common business processes for cross border tendering
- ▶▶ Regional tendering within EU and EEA
- ▶▶ Mainly for purchase of goods and services and/or services that can be itemized.

### 1.3.2 Summary

Respect to the layers of the European Interoperability Framework 2.0, the PEPPOL VCD BIS addresses interoperability as follows:

- ▶ Legal:
  - ▶▶ compliance with directive 2004/18/EC (art. 45-52);
  - ▶▶ legal mappings of relevant evidence to national procurement regulations and European regulation requirements;
  - ▶▶ specific National requirements.
- ▶ Organization (Organization/Business):
  - ▶▶ This PEPPOL BIS supports B2G
  - ▶▶ This PEPPOL BIS supports cross border, regional and domestic tendering in EU and EEA
  - ▶▶ This PEPPOL BIS can act as a standardized EDI agreement within a community
- ▶ Organization (Process):
  - ▶▶ This PEPPOL BIS supports the economic operator in proofing his capabilities in the tendering process.
- ▶ Semantic:
  - ▶▶ The set of information elements is assumed to be sufficient to support Organizational Business and Processing requirements stated above.
  - ▶▶ This PEPPOL BIS defines a set of Business rules ensuring a common way of processing the information elements. The rules are stated in a way that allows automated validation of document instances. Economic Operator cannot issue documents that conflict with these rules.
- ▶ Technical Interaction (Process and semantic implementation):
  - ▶▶ Binding compatible with OASIS UBL 2.0, see [UBL]
  - ▶▶ ISO/IEC 19757-3 Schematron, for automation of document validation, see [Schematron]
- ▶ Technical Interaction (eSignature Validation):
  - ▶▶ Not mandatory in this PEPPOL BIS. Not supported.
- ▶ Technical Transport:
  - ▶▶ PEPPOL has developed a Transport Infrastructure but its use is not mandatory in this PEPPOL BIS.
  - ▶▶ If Economic Operators want to use the PEPPOL Transport Infrastructure to exchange pre-awarding qualification documents complying with this PEPPOL BIS, they must fulfil the approach defined in chapter 8.1 of this PEPPOL BIS.

### 1.3.3 Benefits

When participating in public tenders the Economic Operators are required to provide proof of fulfilment of the qualitative selection criteria requested by the Contracting Authority.



In this scope, potential benefits of using the Criteria Template PEPPOL BIS are:

- ▶▶ the Contracting Authority defines the requested criteria early in the process in an interoperable electronic data format (instead of defining them only in written free text);
- ▶▶ the Economic Operator does not need to "select" the criteria manually (based on the written free text statement of the Contracting Authority) but can use an interoperable electronic data package containing the requested criteria (Criteria Template). The steps "Understand, Interpret Criteria" and "Select Criteria" of the Economic Operator are therefore no longer necessary;
- ▶▶ the validation of a VCD package can be done automatically by checking the received evidences against the requested criteria instead of a manual check by the user of Contracting Authority. This automated check can not only prove the technical compliance of a VCD package but also the validity of supplied evidences according the common legal rule set (Ontology);
- ▶▶ the breaks in data transmission and data format changes are eliminated and the number of manual steps are reduced to improve the process quality and reduce the process cycle time.

### 1.3.4 Status

Test Pilot		
Production Pilot		
Production		

## 1.4 References

- [PEPPOL] <http://www.peppol.eu/>
- [PEPPOL\_Transp] [http://www.peppol.eu/peppol\\_components/-transport-infrastructure](http://www.peppol.eu/peppol_components/-transport-infrastructure)
- [PEPPOL\_Sign] [http://www.peppol.eu/peppol\\_components/esignature](http://www.peppol.eu/peppol_components/esignature)
- [CEN\_BII] [www.cen.eu/cwa/bii/specs](http://www.cen.eu/cwa/bii/specs)
- [UBL] <http://docs.oasis-open.org/ubl>
- [XML] <http://www.w3.org/XML>
- [Schematron] <http://www.schematron.com>
- [XSLT] <http://www.w3.org/TR/xslt20/>
- [Genericcode] <http://docs.oasis-open.org/codelist/ns/genericcode/1.0/>



## 2 Legal interoperability

In this chapter the legal scope for adopting the PEPPOL Criteria Template (CT) Business Interoperability Specifications (BIS) is described. It applies to VCD Systems supporting Contracting Authorities (Customers) and Economic Operators (Suppliers) who reside in countries whose eProcurement legal frameworks are aligned with requirements as stated in this specification.

The legal scope here defined is based on:

- ▶ European regulation concerning the criteria for qualitative selection of candidates or tenderers in procedures for the award of public works contracts, public supply contracts and public service contracts (EU Directives 2004/18/EC (art.45-52));
- ▶ legal mappings of relevant national procurement regulations and European regulation;
- ▶ specific National requirements.

### 2.1 EU Directive

In the perspective of VCD Systems, the relevant legal reference at European level is the directive 2004/18/EC (art. 45-52): it provides the criteria for qualitative selection of tenders in procedures for the award of public works contracts, public supply contracts and public service contracts.

▶ **Requirement Leg01: art. 45 - Personal situation**

Criterion Group	Legal Reference	Subcriteria
<b>Personal situation: absence of conviction (sec. 45 §1 and §2 (c, d, g))</b>	sec. 45 §1 (a)	has been convicted by final judgment of the participation in a criminal organization
	sec. 45 §1 (b)	has been convicted by final judgment of corruption
	sec. 45 §1 (c)	has been convicted by final judgment of fraud
	sec. 45 §1 (d)	has been convicted by final judgment of money laundering
	sec. 45 §2 (c)	has been convicted by a judgment what has the force of res judicata in accordance with the legal provisions of the country of any offence concerning his professional conduct
	sec. 45 §2 (d)	has been guilty of grave professional misconduct proven by any means which the contracting authorities can demonstrate
	sec 45 §2 (g)	is guilty of serious misinterpretation in supplying the information required under this section or has not supplied such information
<b>Personal situation: non-bankruptcy and suspended business</b>	art. 45 § 2 (a) part 1	is bankrupt
	art. 45 § 2 (a) part 2.1	is being wound up, where his affairs are being administered by the court



<b>activities (sec. 45 §2 (a-b))</b>	art. 45 § 2 (a) part 2.2	is being wound up, where he has entered into an arrangement with creditors
	art. 45 § 2 (a) part 2.3	is being wound up, where he has suspended business activities
	art. 45 § 2 (a) part 3	is in any analogous situation arising from a similar procedure under national laws and regulations
	art. 45 § 2 (b) part 1	is the subject of proceedings for a declaration of bankruptcy
	art. 45 § 2 (b) part 2	is the subject of proceedings for an order for compulsory winding up or administration by the court
	art. 45 § 2 (b) part 3	is the subject of proceedings for an order for compulsory arrangement with creditors
	art. 45 § 2 (b) part 4	is the subject of any other similar proceedings under national laws or regulations
<b>Personal situation: compliance with fiscal and social obligations (sec. 45 § 2 (e-f))</b>	art. 45 § 2 (e)	has not fulfilled obligations relating to the payment of social security contributions
	art. 45 § 2 (f)	has not fulfilled obligations relating to the payment of taxes

► **Requirement Leg02: art. 46 - Suitability to pursue the professional activity**

Criterion Group	Legal Reference	Subcriteria
<b>Suitability to pursue professional activity (sec. 46)</b>	art. 46 paragraph 1	has official enrolment on one of the professional or trade registers in its member state
	art. 46 paragraph 2	is member of a particular organisation in order to perform the service

► **Requirement Leg03: art. 47 - Economic and financial standing**

Criterion Group	Legal Reference	Subcriteria
<b>Economic and financial standing (sec. 47 § 1 - § 5)</b>	art. 47 § 1 (a) part 1	has appropriate statement from bank
	art. 47 § 1 (a) part 2	has evidence of professional risk indemnity insurance
	art. 47 § 1 (b)	balance sheet or extracts from it, where publication of the balance-sheets is required under the law of the country in which the economic operator is established
	art. 47 § 1 (c)	undertakings' overall turnover and where appropriate turnover in the area covered by the contract
	art 47 § 2	An economic operator may, where appropriate and for a particular contract, rely on the capacities of other entities, regardless of the legal nature of the links which it has with them. It must in that case prove to the contracting authority

		that it will have at its disposal the resources necessary, for example, by producing an undertaking by those entities to that effect.
	art 47 § 3	Under the same conditions, a group of economic operators as referred to in Article 4 may rely on the capacities of participants in the group or of other entities.
	art 47 § 4 - dummy criterion	Contracting authorities shall specify, in the contract notice or in the invitation to tender, which reference or references mentioned in § 1 they have chosen and which other references must be provided.

► Requirement Leg04: art. 48 - Technical and/or professional ability

Criterion Group	Legal Reference	Subcriteria
<b>Technical and professional ability (sec. 48 § 1 - § 6)</b>	art. 48 §2 (a)	list of works carried out over last five years; principal deliveries effected and main services provided in the past three years
	art. 48 §2 (b)	indication of the technicians or technical bodies involved, especially those responsible for quality control and, in the case of public works contracts, those upon whom the contractor can call in order to carry out the work
	art. 48 §2 (c)	description of technical facilities and measures used by the supplier or service provider for ensuring quality and the undertaking's study and research facilities
	art. 48 §2 (d)	a check carried out by the contracting authorities or on their behalf by a competent official body of the country in which the supplier or service provider is established, subject to that body's agreement, on the production capacities of the supplier or the technical capacity of the service provider and, if necessary, on the means of study and research which are available to it and the quality control measures it will operate
	art. 48 §2 (e)	educational and professional qualifications of the service provider or contractor and/or those of the undertaking's managerial staff and, in particular, those of the person or persons responsible for providing the services or managing the work;
	art. 48 §2 (f)	an indication of the environmental management measures that the economic operator will be able to apply when performing the contract;
	art. 48 §2 (g)	a statement of the average annual manpower of the service provider or contractor and the number of managerial staff for the last three years;
	art. 48 §2 (h)	a statement of the tools, plant or technical equipment available to the service provider or contractor for carrying out the contract



	art. 48 §2 (i)	an indication of the proportion of the contract which the services provider intends possibly to subcontract
	art. 48 §2 (j) part 1	samples, descriptions and/or photographs, the authenticity of which must be certified if the contracting authority so requests;
	art. 48 §2 (j) part 2	certificates drawn up by official quality control institutes or agencies of recognised competence attesting the conformity of products clearly identified by references to specifications or standards.
	art. 48 §5	In procedures for awarding public contracts having as their object supplies requiring siting or installation work, the provision of services and/or the execution of works, the ability of economic operators to execute the installation or the work may be evaluated in particular with regard to their skills, efficiency, experience and reliability.
	art. 48 § 3	An economic operator may, where appropriate and for a particular contract, rely on the capacities of other entities, regardless of the legal nature of the link which it has with them. It must in that case prove to the contracting authority that it will have at its disposal the resources necessary for the execution of the contract, for example, by producing an undertaking by those entities to place the necessary resources at the disposal of the economic operator.

► **Requirement Leg05: art. 49 - Quality assurance standards**

Criterion Group	Legal Reference	Subcriteria
<b>Quality assurance standards (sec. 49)</b>	art. 49	certificates drawn up by independent bodies attesting the compliance of the economic operator with certain quality assurance standards

► **Requirement Leg06: art. 50 - Environmental management standards**

Criterion Group	Legal Reference	Subcriteria
<b>Environmental management standards (sec. 50)</b>	art. 50	certificates drawn up by independent bodies attesting the compliance of the economic operator with certain environmental management standards

► **Requirement Leg07: art. 51 - Additional documentation and information**

Criterion Group	Legal Reference	Subcriteria
<b>Additional documentation and information (sec. 51)</b>	art. 51	The contracting authority may invite economic operators to supplement or clarify the certificates and documents submitted pursuant to Articles 45 to 50.



**Requirement Leg08: art. 52 - Official lists of approved economic operators and certification by bodies established under public or private law**

Criterion Group	Legal Reference	Subcriteria
<b>Official lists of approved economic operators and certification by bodies established under public or private law (sec. 52)</b>	art. 50 § 2	Economic operators registered on the official lists or having a certificate may, for each contract, submit to the contracting authority a certificate of registration issued by the competent authority or the certificate issued by the competent certification body. The certificates shall state the references which enabled them to be registered in the list/to obtain certification and the classification given in that list.
	art. 50 § 5 part 1	For any registration of economic operators of other Member States in an official list or for their certification by the bodies referred to in paragraph 1, no further proof or statements can be required other than those requested of national economic operators and, in any event, only those provided for under Articles 45 to 49 and, where appropriate, Article 50.

## 2.2 Taxonomy of the term Evidences

In the pre-awarding phase, the Contracting Authority must either specify the documentation that has to be submitted by Economic Operator or the criteria of qualitative selection and exclusion that have to be fulfilled by him.

In order to clarify the criteria editing procedure requirements with regard to evidence types, PEPPOL has made the document "Legal Specification: Clarifying of Evidence types and User stories" (version 0.3, issue date 25.08.2011). This PEPPOL BIS adopts the "Taxonomy of the term evidence" provided by that legal specification **Fehler! Verweisquelle konnte nicht gefunden werden..**

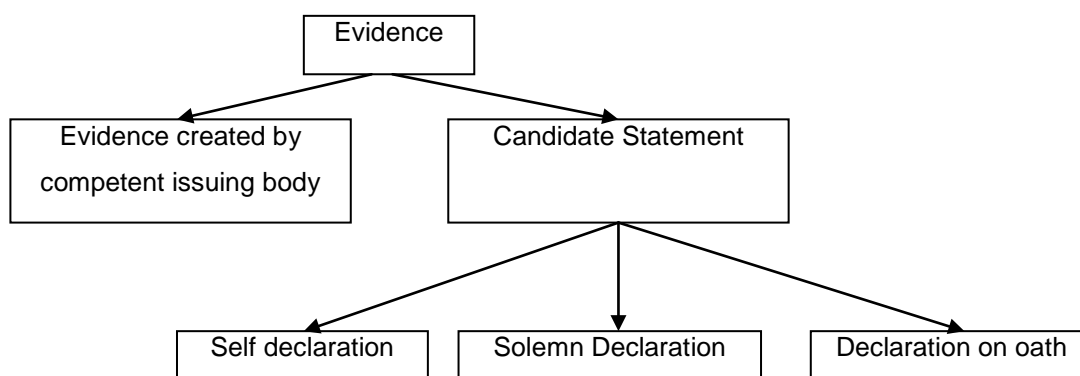


Figure 4 Taxonomy of the term evidence



The taxonomy of the concept “evidence” differentiates between:

- ▶ evidences provided by the candidate himself (e.g. self-declaration, declaration on oath, solemn statement) or

evidence where the issuer is not the candidate (e.g. certified authorities and/or [authorized] third parties).

## 2.3 Legal mappings of relevant national procurement regulations and European regulation requirements

In respect of the directive 2004/18/EC, PEPPOL has defined the legal mappings towards the relevant national procurement regulations. This can be considered the PEPPOL position about how the EU directive should be implemented in the different countries.

The mappings representation is constituted of:

- ▶ European and national ontologies<sup>3</sup> ;;
- ▶ national mapping tables<sup>4</sup> (see an example in Appendix A).

The national mapping tables are based upon a mapping template defined by PEPPOL<sup>5</sup>.

The template reflects rules and principles with regard to mapping between criteria at European and National levels and the corresponding evidences that prove these criteria; it follows the structure indicated in *Figure 5*.

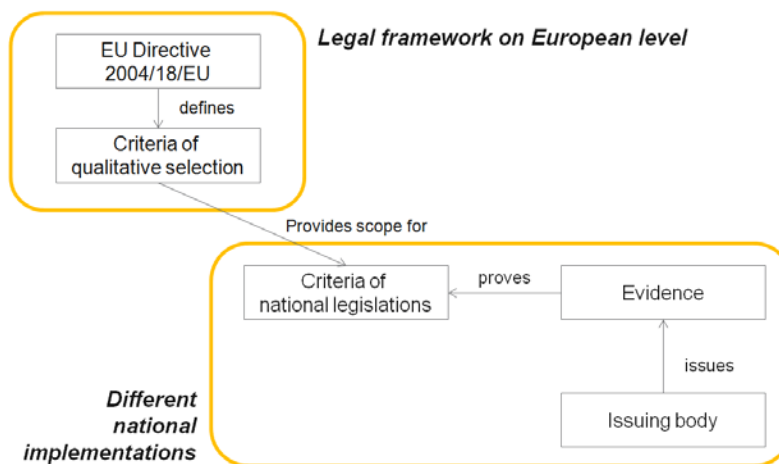


Figure 5 Mapping between different Member State regulations

<sup>3</sup> PEPPOL EIA – PreAward - ICT Components\_EU Ontology and national ontologies with their mappings

<sup>4</sup> [http://www.peppol.eu/peppol\\_components/peppol-eia/eia#ict-architecture/pre-award-e-procurement/models](http://www.peppol.eu/peppol_components/peppol-eia/eia#ict-architecture/pre-award-e-procurement/models)

<sup>5</sup> *Deliverable 2.2, Chapter 3.4: Specification of architecture and components enabling cross-border VCD [D2.2, 2010].*

The mapping template is based upon the European legislation which is interlinked to the national public procurement domains. For every domain a representation of a national index is given; it provides an overview of national criteria demanded in public procurement, and how these are evidenced (i.e. which attestations and/or statements provide what evidence). In this respect, the European criteria of qualitative selection and non-exclusion criteria, which are derived from the European Directive 2004/18/EC, are considered the reference criteria, while the national criteria which are the basis for individual public tenders in respective countries are considered the local criteria. No new legal rules will be created by the mapping procedure. The mapping is solely based on the existing national and European legal framework.

The mapping of criteria and linking to evidences are a comprehensive legal supporting system which can be used according to the requirements described in a call for tender. The interpretation of the Call for Tender (CfT) with regards to criteria is the Economic Operator's responsibility.

## 2.4 National requirements

This PEPPOL BIS specification defines the core set of legal requirements coming from the European and national regulations and the way for mapping them. This ensures a common understanding and enables Economic Operators and VCD Systems to provide all required information in a tendering process.

Nevertheless specific requirements at national level exist but they are out of the scope of this PEPPOL BIS. Here only the normative references are provided. Participants from different countries can develop specific national "extensions" in order to cover their own set of national legal requirements.

An "extension" is a collection of requirements that are not supported by the related BIS and that should be applied in specific context (for example national law). To conform to PEPPOL specifications, an "extension" may not conflict with its BIS, i.e. a message that is valid from the extension perspective must also be valid from the BIS perspective.

### 3 Organizational - Organization/Business Interoperability

Organisational requirements originate from the context of the pre-award phase of public procurement both for national and cross-border procurements in the European Union. The primary scope of the Criteria Template is the tendering phase in which Economic Operators apply for a public contract that is being awarded by a Contracting Authority to purchase certain products or services. Details about actors and their roles as well as the interaction between them will be described in the subsequent sections.

#### 3.1 Organizational scope

The Criteria Template BIS defines the exchange of information about the criteria of qualitative selection being part of a Call For Tender between a Contracting Authority ("*Customer*", acting in the role of a "*Qualifier*") and an Economic Operator ("*Supplier*", acting in the role of an "*Applicant*").

Figure 8 provides a general overview about the use case, involved business partners and their roles.

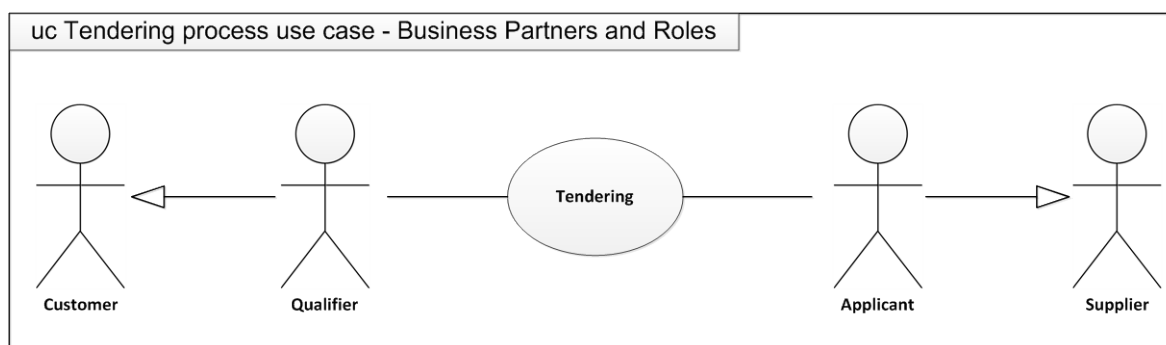


Figure 6 Tendering process use case - Business Partners and Roles

*Table 1* and *Table 2* describe the partners and respective roles in more detail.

<b>Business partner</b>	<b>Description</b>
Customer	The customer is the legal person or organization that demands a product or service. A customer can be any public buyer or contracting authority that wants to purchase certain products or services.
Supplier	The supplier is the legal person or organization that provides a product or service. A supplier can be any economic operator that sells goods or provides services.

*Table 1* Description of Business Partners

<b>Role/Actor</b>	<b>Description</b>
Qualifier/ Contracting Authority	The party that provides the criteria information.
Applicant/ Economic Operator	The party that receives criteria information (as part of a Call for Tender) with the intention to participate in a tender.

*Table 2* Description of Actors/Roles

In addition to this overview, the use case of the tendering phase can be decomposed into a more detailed use case diagram (*Figure 6**Figure 7*). The single use case “Define Criteria” (highlighted with green background color) is the main focus of the VCD and this BIS. The other use cases are only mentioned in order to provide a general picture of the tendering phase.

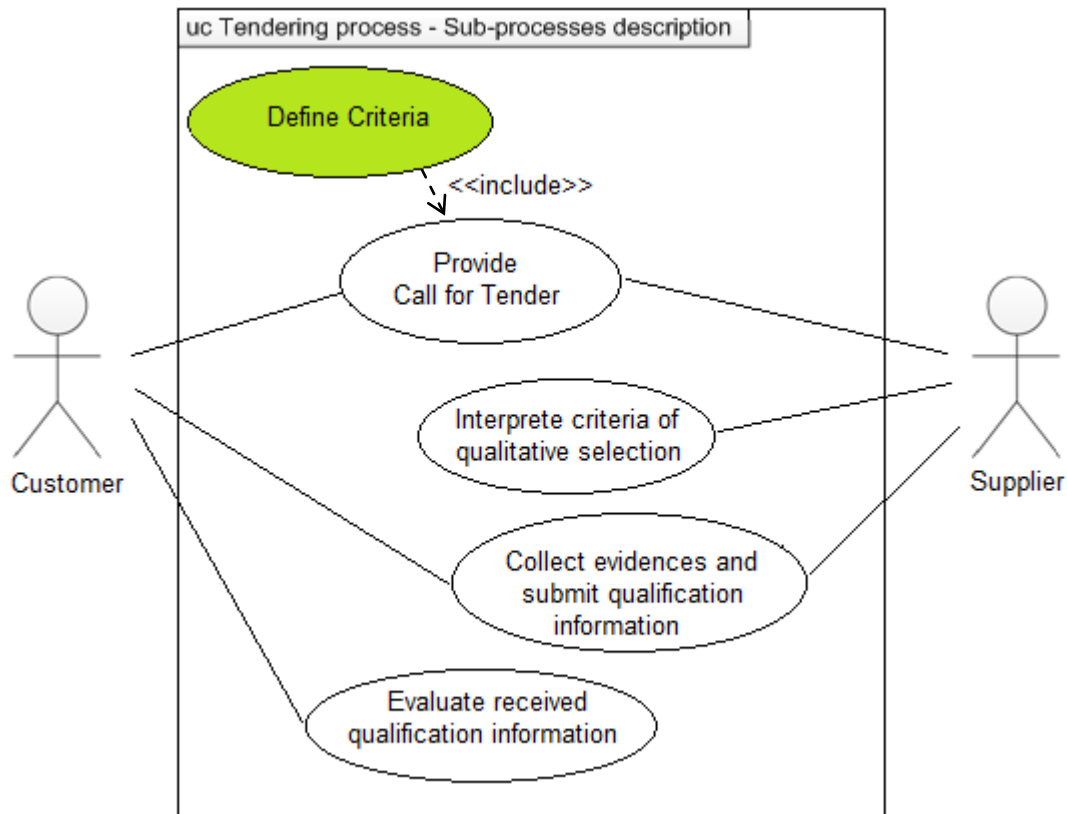


Figure 7 Tendering process use case - Sub-processes description

The specification of criteria of qualitative selection is the part of tendering process during which the Contracting Authority defines the relevant criteria for a specific tender to be proven by Economic Operators that wish to participate in the tender.

The criteria are collected in an interoperable electronic data package (Criteria Template), that can be issued with a Call for Tender (CfT), placed on an eTendering platform, send per mail, etc.

The Economic Operator can use this criteria as a basis for the VCD preparation. Finally, the Contracting Authority can automatically validate a VCD package by checking the received evidences against the requested criteria. This automated check can not only prove the technical compliance of a VCD package but also the validity of supplied evidences according the common legal rule set (Ontology).

### 3.2 Business requirements

PEPPOL has identified the set of business requirements needed to meet legal requirements and common business needs in specifying and exchanging criteria that are relevant for a tender in tendering process in

EU and EEA. This Criteria Template BIS defines how to define relevant qualification criteria electronically satisfying these business requirements.

The business requirements identified, grouped by categories, are the following:

▶ **Criteria Template's content**

▶▶ Org01: Criteria Template identification

The date and time on which the Criteria Template document has been issued must be provided.

▶▶ Org02: Contracting authority (CA)

The CA issuing the Criteria Template document must be specified.

▶▶ Org03: Pre-qualification Body

It should be possible to specify a list of pre-qualification or evidence-delivering agencies that the CA can use to retrieve Evidences for itself.

▶▶ Org04: Legal domain

The legal domain under which legislation it is carried out must be specified.

▶▶ Org05: Call for Tender

It should be possible to provide the Call for Tender reference.

▶ **Call for Tender 's information**

▶▶ Org26: Call for Tender identification

The Call For Tender's name must be provided.

▶ **Contracting authority's information**

▶▶ Org7: Contracting Authority identification

Information needed to identify the Contracting Authority must be provided; they are: name, identification, endpoint id.

▶▶ Org8: Contracting Authority contact information

Information needed to contact a Contracting Authority should be provided; they are: Postal address, telephone number, fax number, eMail address.

▶ **Criteria list**

▶▶ Org09: National criteria

The Criteria Template document should be able to include CA national criteria.

▶▶ Org10: EU criteria

The Criteria Template document should be able to include atomic EU criteria.

▶▶ Org11: Additional criteria

The Criteria Template document should be able to define additional criteria which are not part of the criteria defined in the EVS ontologies and give them a CA national name/description.

▶▶ Org12: Tender role/type

The tender role and the type a list of required criteria is related to must be provided.

▶ **Criterion's information**

▶▶ Org13: European regulation

For each criterion the EU legal reference must be provided.



- ▶▶ Org14: Lots information  
It should be possible to provide relevant information regarding lots for a criterion.
- ▶▶ Org15: General information  
It should be possible to provide annotations, additional information or complementary information for a criterion.
- ▶ **Proving Evidence's information**
  - ▶▶ Org16: Translation  
It should be possible to specify if a translation is required and which translation type, e.g. none, simple translation, certified translation, notarised translation.
  - ▶▶ Org17: Attestation  
It should be possible to specify if a certification of the authenticity is required and which type, e.g. none, Legalization or apostille.
  - ▶▶ Org18: Attestation  
It should be possible to specify what kind of copy is required, e.g. unqualified copy or certified copy.
  - ▶▶ Org19: Candidate statement  
It should be possible to specify a candidate statement.
- ▶ **Candidate statement's information**
  - ▶▶ Org20: Minimal substitute level  
The type of candidate statement is required as the minimal substitute must be specified.
  - ▶▶ Org21: Template document  
It should be possible to define/include a predefined template document for providing the candidate statement.
- ▶ **Digital signature**
  - ▶▶ Org22: Criteria template document signature  
The Criteria template document shall be capable of being signed and containing the signature.
  - ▶▶ Org23: Document signature verification results  
The Criteria template document shall contain information about the validation/verification of signatures of a document that has been attached to it.

## 4 Organizational - Process Interoperability

### 4.1 Process model

The Criteria Template (containing information about the criteria that tenderers are required to provide in a specific tendering process) needs to be provided by Contracting Authority and received by the Economic Operator in a specified process that is understood, agreed and supported by both parties. This Criteria Template PEPPOL BIS specifies this process in terms of collaboration (**Fehler! Verweisquelle konnte nicht gefunden werden.** 6...) and transactions sequence (**Fehler! Verweisquelle konnte nicht gefunden werden.**) happening under a set of pre and post conditions (*Table 3*).

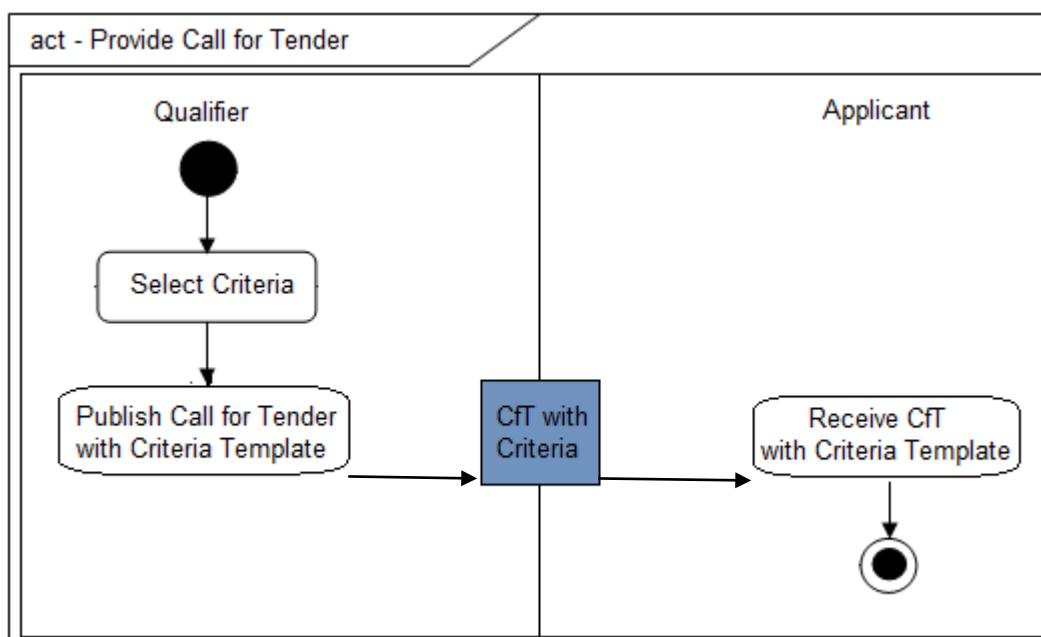


Figure 8 ... Collaboration

<i>Description</i>	<p>The Qualifier collects the criteria in a Call for Tender in an interoperable electronic data package (Criteria Template).</p> <p>The Qualifier publishes the Criteria Template with the related Call for Tender (CfT); this can be done in several way (using an eTendering platform, by mail, etc.). In any case the Applicant receives the CfT with criteria.</p>
<i>Pre-condition</i>	<p>The country and legal domains of the Qualifier are modeled as ontology in the European VCD system.</p> <p>The country and legal domains of the Qualifier are not modelled as ontology in the European VCD system but an European reference ontology, criteria code lists or "initial basic ontology" exists and can be used instead.</p>
<i>Post-condition</i>	<p>The Applicant does not need to interpret the criteria (the VCD Package can be automatically created).</p>



Table 3 Collaboration description

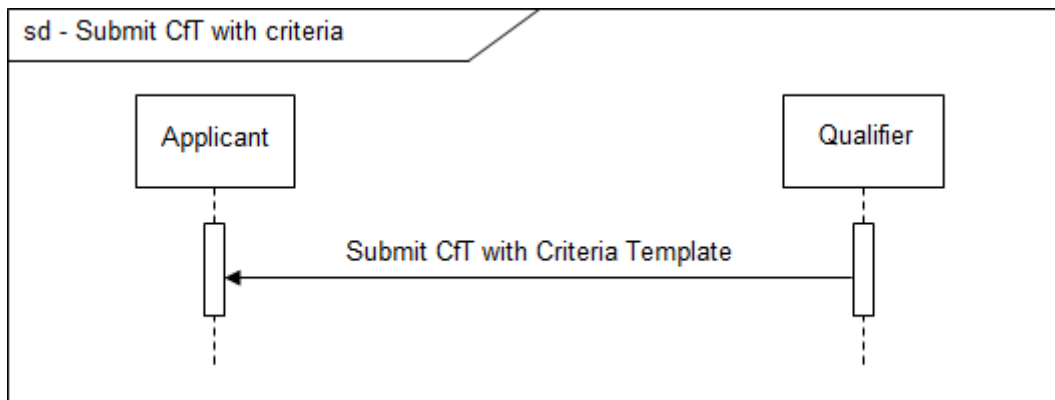


Figure 9 ... Transaction sequence

## 4.2 Collaboration business rules

- ▶ A Criteria Template states selected atomic criteria for a specific tender to be proven by economic operators that wish to participate in the tender.
- ▶ A Criteria Template document is "Call for Tender"-specific but not tenderer-specific.
- ▶ A Criteria Template document can include one or more embedded templates documents, depending on the number of candidate statements defined for each proving evidence.
- ▶ A Criteria Template can be used for automatically validating a VCD package. This automated check can not only prove the technical compliance of a VCD package but also the validity of supplied evidences according the common legal rule set (Ontology).

## 5 Semantic Interoperability

### 5.1 Concept database

All Criteria Template concepts existing in the domain of the VCD System are collected in the VCD concept database. It provides an aggregated list of all concepts that occur in the domain of the Criteria Template and VCD and its software components. Furthermore, it defines each concept and specifies the rules for usage and creation of values. In result, the concept data base provides a common specification and understanding of the VCD information model to facilitate semantic interoperability.

Two different versions of the VCD concept database exist: 1.3.1 and 2.0; only the second one includes the Criteria Template concepts. The transaction data model for Criteria Template described in chapter 5.2 of this PEPPOL BIS is based on the concept data base version 2.0.

### 5.2 Transaction Data Model

This PEPPOL BIS defines the Criteria Template transaction data models (see Appendix A) to have been used by the Contracting Authorities belonging to the PEPPOL Community to provide the suggested and/or requested criteria in a tender in a cross-border context and with stricter adherence to EU directives.

The following table shows how the transaction data model supports the identified business requirements (listed in section 3.2).

Requir. ID	Target	Criteria Template Data Model's Element
Org01	Criteria Template identification	<ul style="list-style-type: none"> <li>- Criteria Template. UUID</li> <li>- Criteria Template. Compilation Date</li> <li>- Criteria Template. Compilation Time</li> </ul>
Org02	Contracting authority	<ul style="list-style-type: none"> <li>- Criteria Template. Contracting Authority Party</li> </ul>
Org03	Pre-qualification Body	<ul style="list-style-type: none"> <li>- Criteria Template. Pre QualificationBody</li> </ul>
Org04	Legal domain	<ul style="list-style-type: none"> <li>- Criteria Template. Legal Domain</li> </ul>
Org05	Call for Tender reference	<ul style="list-style-type: none"> <li>- Criteria Template. Call ForTender</li> </ul>
Org06	Call for Tender identification	<ul style="list-style-type: none"> <li>- Call For Tender. Name</li> </ul>
Org07	Contracting Authority identification	<ul style="list-style-type: none"> <li>- Contracting Authority Party. Endpoint Identifier</li> <li>- Contracting Authority Party. Party Identification</li> <li>- Contracting Authority Party. Party Name</li> </ul>

Org08	Contracting Authority contact information	<ul style="list-style-type: none"> <li>- Contracting Authority Party. Postal Address</li> <li>- Contracting Authority Party. Contact</li> </ul>
Org09	National criteria	<ul style="list-style-type: none"> <li>- Criteria List. Requested Criterion</li> </ul>
Org10	EU criteria	<ul style="list-style-type: none"> <li>- Criteria List. Requested Criterion</li> </ul>
Org11	Additional criteria	<ul style="list-style-type: none"> <li>- Criteria List. Requested Criterion</li> </ul>
Org12	Tender role/type	<ul style="list-style-type: none"> <li>- Criteria List. Tenderer Role Code</li> <li>- Criteria List. Tenderer Type Code</li> </ul>
Org13	European regulation	<ul style="list-style-type: none"> <li>- Requested Criterion. European Regulation</li> </ul>
Org14	Lots information	<ul style="list-style-type: none"> <li>- Requested Criterion. Procurement Lot Name</li> </ul>
Org15	General information	<ul style="list-style-type: none"> <li>- Requested Criterion. Description</li> </ul>
Org16	Translation	<ul style="list-style-type: none"> <li>- Evidence Provision Information. Translation</li> </ul>
Org17	Attestation	<ul style="list-style-type: none"> <li>- Evidence Provision Information. Attestation</li> </ul>
Org18	Attestation	<ul style="list-style-type: none"> <li>- Attestation. Required Document Type Code</li> </ul>
Org19	Candidate statement	<ul style="list-style-type: none"> <li>- Evidence Provision Information. Candidate Statement</li> </ul>
Org20	Minimal substitute level	<ul style="list-style-type: none"> <li>- Candidate Statement. Minimum Substitution Level Code</li> </ul>
Org21	Template document	<ul style="list-style-type: none"> <li>- Criteria Template. Template Document. Proves Criterion</li> </ul>
Org22	Criteria template document signature	<ul style="list-style-type: none"> <li>- Criteria Template. Signature</li> </ul>
Org23	Document signature verification results	<ul style="list-style-type: none"> <li>- Document Reference. Result Of Verification</li> </ul>

The set of information defined in each transaction data model can be restricted or extended depending of the context by adding business rules and/or refining the semantic of information elements. This means define an "extension" of this BIS specification.

Possible business rules that constrain the use or value of an information element include:

- ▶ Restrictions on cardinality.
- ▶ Optional information elements become mandatory.
- ▶ Optional information elements become not permitted.

Possible information element restrictions include:

- ▶ Precision in semantics of information elements.
- ▶ Precision in formats of information elements.
- ▶ Choice of Code lists (where not defined).



- ▶ Restrictions on values in code list.
- ▶ Dependency constraints between values in information elements.

To conform to PEPPOL specifications, an "extension" may not conflict with its BIS, i.e. a message that is valid from the extension perspective must also be valid from the BIS perspective.

## 5.3 Validation rules

In order to facilitate interoperability in cross border trade, sets of validation rules have been defined.

The validation rules are sets of rules that clarify the content of Criteria Template instances by stating mandatory fields, fixed values (like code lists), dependency between fields in the same object and dependency between different objects.

The rules are grouped into two main sections depending on their scope:

- ▶ rules working on a single object (i.e.: a Criteria Template XML document);
  - ▶▶ check mandatory fields, fixed values and dependencies between fields;
  - ▶▶ check the use of mandatory set of values on specific fields (code lists).

Each rule has an error level that can be stated as:

- ▶ *warning*: offering recommendations to improve the quality of the instance or regain full validity
- ▶ *fatal*: the rule point to a major issue of consistency or data correctness.

### 5.3.1 Validation rules from VCD concept database 2.0

The *Table 4* collects the set of validation rules coming from the concept database 2.0 and affecting the Criteria Template document model elements.

RuleID	Rule	Error level
VCD-CT02-R008	The electronic mail address SHOULD have a valid eMail address value.	warning
VCD-CT02-R009	A UUID MUST have the scheme name "UUID Version 4", scheme agency name "ietf" and scheme uri "http://tools.ietf.org/html/rfc4122".	fatal
VCD-CT02-R024	The Legal Text element MUST have the attribute LanguageID in order to define the language.	fatal
VCD-CT02-R027	The Further Information element MUST have the attribute LanguageID in order to define the language.	fatal
VCD-CT02-R029	A Criteria Template SHOULD not contain empty elements.	warning
VCD-CT02-R031	If the Criteria Template refers to the Call For Tender, the Call For Tender's name MUST be provided.	fatal
VCD-CT02-R032	The Evidence Provision Information MUST have either an attestation or a candidate statement.	fatal

VCD-CT02-R033	A translation MUST not be present if the attestation doesn't exist.	fatal
VCD-CT02-R034	If evidence provision information refer to a pre qualification body, the PreQualificationID MUST refer to an existing PreQualificationBody.	fatal
VCD-CT02-R035	If a candidate statement refers to a template document, it MUST exist.	fatal
VCD-CT02-R036	A Template Document MUST refer at least one Criterion.	fatal
VCD-CT02-R037	A Template Document MUST refer existing Criteria.	fatal

Table 5 Validation rules affecting VCD 2.0 instances

The Table 6 collects the set of coded values validation rules coming from the concept database 2.0 and affecting the Criteria Template document model elements.

RuleID	Rule	Error level
VCD-02-R012	The DomainCode MUST have a value that is defined in the DomainCode code list.	fatal
VCD-02-R019	The AddressTypeCode MUST have a value that is defined in the AddressTypeCode code list.	fatal
VCD-02-R022	The LocaleCode of a Language MUST have a value that is defined in the LocaleCode code list.	fatal
VCD-02-R023	The SchemaAgencyName MUST have a value that is defined in the SchemaAgencyCode code list.	fatal
VCD-02-R025	The LanguageID MUST have a value that is defined in the LocaleCode code list.	fatal
VCD-02-R039	The TendererRoleCode MUST have a value that is defined in the TendererRoleCode code list.	fatal
VCD-02-R040	The TendererTypeCode MUST have a value that is defined in the TendererRoleCode code list.	fatal
VCD-02-R041	The RequiredDocumentTypeCode MUST have a value that is defined in the RequiredDocumentTypeCode code list.	fatal
VCD-02-R042	The MinimumSubstitutionLevelCode MUST have a value that is defined in the MinimumSubstitutionLevelCode code list.	fatal

Table 6 Validation rules affecting both VCD and VCD Package 2.0 instances

## 5.4 Identifiers

PEPPOL has defined a "Policy for Use of Identifiers" that describes the specific case for Party Identifiers and principles that should be followed in other cases.

About the specific use of identifiers in VCD and VCD Package this PEPPOL BIS states as follows (Table 7):



Identifier	Constraint
Requested Criterion Identifier	At least the following attributes must be specified: schemeName (default value:"UUID Version 4"); schemeAgencyName (default value: "ietf"), schemeURI (default value: "http://tools.ietf.org/html/rfc4122")
Call For Tender Identifier	No constraints
Document Reference Identifier	At least following attributes must be specified: schemeName, schemeURI, schemeAgencyName.
Party Identifier	POLICY 1, POLICY 2, POLICY 3 from "Peppol Policy for Use of Identifiers"
Signature Identifier	At least following attributes must be specified: schemeName, schemeURI, schemeAgencyName
Endpoint Identifier	POLICY 1, POLICY 2, POLICY 3 from "Peppol Policy for Use of Identifiers"
URI	No constraints
UUID	At least following attributes must be specified: schemeName, schemeURI, schemeAgencyName.

Table 7 Criteria Template

## 5.5 Code lists

A number of information elements values are constrained to be those in a list of codes known as Code Lists; the specific Code Lists used in business transactions must be common between business partners in order to achieve interoperability. *Table 8* lists the code lists identified by PEPPOL to be used in this PEPPOL BIS.

Information elements	Code List	Issuer Agency	Genericcode
AddressTypeCode	Address Type Code	PEPPOL	<a href="#">AddressTypeCode_1.0.0.gc</a>
BinaryObjectMimeCode	Binary Object Mime Code	IANA	<a href="#">BinaryObjectMimeCode_1.0.0.gc</a>
CharacterSetCode	Character Set Code	IANA	<a href="#">CharacterSetCode_1.0.0.gc</a>
CountryIdentificationCode	Country Identification Code	ISO	<a href="#">CountryIdentificationCode_1.0.0.gc</a>
DocumentTypeCode	Document Type Code	PEPPOL	<a href="#">DocumentTypeCode_1.0.0.gc</a>
DomainCode	Domain Code	PEPPOL	<a href="#">DomainCode_1.0.0.gc</a>
HashValidateResultCode	Hash Validate Result Code	PEPPOL	<a href="#">HashValidateResultCode_1.0.0.gc</a>
LocaleCode	Locale Code	UNICODE	<a href="#">LocaleCode_1.0.0.gc</a>



		Consortium	
SubstituteEvidenceCode	Substitute Evidence Code	PEPPOL	<a href="#">SubstituteEvidenceCode_1.0.0.gc</a>
Tenderer Role	Tenderer Role Code	PEPPOL	<a href="#">TendererRoleCode_1.0.0.gc</a>
Tenderer Type	Tenderer Type Code	PEPPOL	<a href="#">TendererTypeCode_1.0.0.gc</a>
ValidateResultCode	Validate Result Code	PEPPOL	<a href="#">ValidateResultCode_1.0.0.gc</a>

Table 8 Criteria Template Code List

## 6 Technical Interaction Interoperability – Process and Semantic Implementation

### 6.1 Example XML Implementation

This section uses a sample of request for qualification, from a Contracting Authority to an Economic Operator, to demonstrate how these information should be provided by a Criteria Template XML document.

#### 6.1.1 A request for qualification example

<b>Contracting authority's information</b>
Ministry of Finance in Austria Hintere Zollamtsstraße 2b, 1030 Vienna <u>Contact point</u> Mr. Sam Sample Telephone: +43 261 788 3424 Email: samsample@bmf.gv.at <u>Legal domain</u> : Bundesvergabegesetz (BVerG) Austria.
<b>Call for Tender's information</b>
<u>Name</u> : egosta <u>Additional requirements</u> : This post-qualification process will be executed electronically. Qualification documents can be submitted as scanned copies and there is no specific signature method required. Qualification documents have to be submitted in German or English language (certified translation are accepted). The issuer of an evidence has to be authenticated through a legalization or apostille.
<b>Qualification criteria</b>
a) National Regulation Name: Wesentliche Leistungen (Referenzen) <u>National Regulation</u> : eine Liste der wesentlichen in den letzten drei Jahren erbrachten Dienstleistungen im Hinblick auf Projekte im Bereich ePartizipation <u>National legal reference</u> : § 75 (7) Z 1 BVerG <u>European regulation name</u> : List of works <u>European regulation</u> : list of works carried out over last five years; principal deliveries effected and main services provided in the past three years in the domain of eParticipation <u>European legal reference</u> : art. 48 §2 (a)



- b) National Regulation Name: Technischen Ausrüstung und Maßnahmen zur Qualitätssicherung  
National Regulation: eine Beschreibung der technischen Ausrüstung, der Maßnahmen des Unternehmers zur Qualitätssicherung;  
National legal reference: § 75 (7) Z 2 BVergG  
European regulation name: Description of technical facilities  
European regulation: description of technical facilities and measures used by the supplier or service provider for ensuring quality  
European legal reference: art. 48 §2 (c)

#### Additional qualification criteria in case of subcontracting

- a) National regulation name: Angabe von Subaufträgen  
National regulation: eine Angabe, welche Teile des Auftrages der Unternehmer unter Umständen als Subaufträge zu vergeben beabsichtigt;  
National legal reference: § 75 (7) Z 9 BVergG  
European regulation name: Proportion to Subcontract  
European regulation: an indication of the proportion of the contract which the services provider intends possibly to subcontract  
European legal reference: art. 48 §2 (i)

- b) The qualifications requested in "Qualification criteria" a) and b)

#### Additional qualification criteria in case of Consortia

- c) National regulation name: Angabe von Subaufträgen  
National regulation: eine Angabe, welche Teile des Auftrages der Unternehmer unter Umständen als Subaufträge zu vergeben beabsichtigt;  
National legal reference: § 75 (7) Z 9 BVergG  
European regulation name: Proportion to Subcontract  
European regulation: an indication of the proportion of the contract which the services provider intends possibly to subcontract  
European legal reference: art. 48 §2 (i)

- d) The qualifications requested in "Qualification criteria" a) and b)

- e) Bidding consortia will be only considered if a declaration/candidate statement signed by all members will be provided including the following elements: A declaration signed by the members of the bidding consortia that includes:
- I. A list of all members of the bidding consortium
  - II. National regulation name: Benennung eines bevollmächtigten Vertreters

National regulation: Name (Firma, Geschäftsbezeichnung) und Geschäftssitz des Bieters; bei Arbeitsgemeinschaften die Nennung eines zum Abschluss und zur Abwicklung des Vergabeverfahrens und des Vertrages bevollmächtigten Vertreters unter Angabe seiner Adresse; schließlich die (elektronische) Adresse jener Stelle, die zum Empfang der Post berechtigt ist;

National legal reference: § 108 (1) Z 1 BVergG

European regulation name: Authorized representative

European regulation: A group of economic operators may be asked to declare an authorized representative of the bidding consortium

European legal reference: not implemented in European Directive

Template document ID: TD001 at <http://www.templatedocument.org>

## 6.1.2 Criteria Template 2.0.0 XML File

Using the information provided in section 1.1.1, the following XML fragments provide an overview and descriptions of the most relevant data elements of a Criteria Template XML file.

First of all, a Criteria Template XML file contains general information and meta-data about the Criteria Template itself (*Table 9*):

```
<CriteriaTemplate xmlns="urn:peppol:wp2:schema:xsd:CriteriaTemplate-2"
  xmlns:cbc="urn:peppol:wp2:schema:xsd:CommonBasicComponents-2"
  xmlns:cac="urn:peppol:wp2:schema:xsd:CommonAggregateComponents-2"
  xmlns:qdt="urn:oasis:names:specification:ubl:schema:xsd:QualifiedDatatypes-2"
  xmlns:udt="urn:un:unece:uncefact:data:specification:UnqualifiedDataTypesSchemaModule:2"
  xmlns:xsi="http://www.w3.org/2001/XMLSchema-instance">
  <cbc:UUID schemeURI="http://tools.ietf.org/html/rfc4122" schemeAgencyName="ietf"
    schemeName="UUID Version 4">8b3f4ae7-3b79-44cd-0854-78f62395745f</cbc:UUID>
  <cbc:CompilationDate>2012-08-01</cbc:CompilationDate>
  <cbc:CompilationTime>15:01:01.001</cbc:CompilationTime>
  ...
</CriteriaTemplate>
```

Element name	Definition
UUID	A universally unique identifier for the Criteria Template.
CompilationDate	The date on which the Criteria Template was issued.
CompilationTime	The time on which the Criteria Template was issued.

Table 9 Criteria Template XML data elements

Additionally to general information, the Criteria Template XML document can provide information about the Call for Tender it is related to ("Call for Tender's information" table from the example). The corresponding XML fragment and definition of each data element is given below (*Table 10*).

```
<cac:CallForTender>
  ...
  <cbc:Name>egosta</cbc:Name>
  <cbc:Description>Qualification documents can be submitted as scanned copies and there is no
    specific signature method required. The issuer of an evidence has to be authenticated through a
    legalization or apostille.</cbc:Description>
</cac:CallForTender>
```

Element name	Definition
CallForTender	Information about the call for tender (identifier, name and description).
CallForTender Name	The name of the Call for Tender. If the Criteria Template refers to the Call For Tender, this information must be provided.
CallForTender Description	<p>Free text description about the Call for Tender.</p> <p>Note that:</p> <ul style="list-style-type: none"> <li>– the information about scanned copies, signature and evidences issuer authentication are here because they apply to all criteria. Alternatively, it is possible to specify the information at "RequiredCriterion" level (using "Description" as well).</li> </ul> <p>Where the Call for Tender required that only specific evidences had a specific requirement, the requirement has to be specified at "Required Criterion" level (using "Description" as well);</p> <ul style="list-style-type: none"> <li>– the information about the required translations are not here, even if they apply to all criteria: they are at "Required Criterion" level where they can be provided as structured information.</li> </ul>

*Table 10* Call for Tender XML data elements

Furthermore the Criteria Template XML document must provide some information about the Contracting Authority and its legal domain ("Contracting authority's information" table from the example). The corresponding XML fragment and definition of each data element are given below (*Table 11 and Table 12*).

```
<cac:ContractingAuthorityParty>
  <cac:PartyName>
    <cbc:Name>Ministry of Finance</cbc:Name>
  </cac:PartyName>
  <cac:PostalAddress>
    ...
    <cbc:StreetName>Hintere Zollamtsstraße</cbc:StreetName>
    ...
    <cbc:BuildingNumber>2b</cbc:BuildingNumber>
```

```

<cbc:CityName>Vienna</cbc:CityName>
<cbc:PostalZone>1030 </cbc:PostalZone>
...
<cac:Country>
  <cbc:IdentificationCode listID="ISO3166-1">AT</cbc:IdentificationCode>
</cac:Country>
</cac:PostalAddress>
<cac:Contact>
  <cbc:Name>Sam Sample</cbc:Name>
  <cbc:Telephone>+43 261 788 3424</cbc:Telephone>
  ...
  <cbc:ElectronicMail>samsample@bmf.gv.at</cbc:ElectronicMail>
  ...
</cac:Contact>
<cac:Person>
  <cbc:FirstName>Sam</cbc:FirstName>
  <cbc:FamilyName>Sample</cbc:FamilyName>
  ...
</cac:Person>
</cac:ContractingAuthorityParty>

```

Element name	Definition
PartyName	The name of the Contracting Authority.
PostalAddress	The Contracting Authority's postal address (street name, building number, city name, ...).
Contact	Information about how a contactable person or organization department can be contacted.
Person	Information (name, job title, ...) about the individual that can be contacted.

Table 11 Contracting Authority XML data elements

```

<cac:LegalDomain>
  ...
  <cbc:DomainCode>at</cbc:DomainCode>
  <cbc:Domain>Bundesvergabegesetz (BVerG) Austria</cbc:Domain>
</cac:LegalDomain>

```

Element name	Definition
LegalDomain	The legal domain of the contracting authority, i.e. the national law that defines the legal rules for criteria and evidences. If an ontology has been used, the ontology domain URI of the country in which the economic operator is established or registered must be provided.
LegalDomain. DomainCode	The legal domain, expressed as code (as defined in Peppol Domain Code code list). In the example: - at= Austria



LegalDomain. Domain	The legal domain, expressed as text.
---------------------	--------------------------------------

Table 12 Contracting Authority's legal domain XML data elements

The Criteria Template provides information about criteria the Economic Operator is required to prove. Several criteria lists can be specified depending on tenderer role and type. For instance, the example above requires three criteria lists.

The first one comes from the "Qualification criteria" table (that collects the criteria for all Economic Operator types and roles); the corresponding XML fragment is:

```
<!-- Qualification criteria list -->
<cac:CriteriaList>
  <cbc:UUID schemeURI="http://tools.ietf.org/html/rfc4122" schemeAgencyName="ietf"
    schemeName="UUID Version 4">0390a883-5e90-4014-913e-aaaed499abcd</cbc:UUID>
  <cbc:TendererRoleCode>any</cbc:TendererRoleCode>
  <cbc:TendererTypeCode>any</cbc:TendererTypeCode>
  <!-- criterion a -->
  <cac:RequestedCriterion>
    <cbc:UUID schemeURI="http://tools.ietf.org/html/rfc4122" schemeAgencyName="ietf"
      schemeName="UUID Version 4">1230a883-5e90-3214-713e-aaaed001abcd</cbc:UUID>
    <cac:ContractingAuthorityNationalRegulation>
      <cbc:Name>Wesentliche Leistungen (Referenzen)</cbc:Name>
      <cbc:LegalReference>§ 75 (7) Z 1 BVergG</cbc:LegalReference>
      ....
      <cbc:LegalText languageID="de-AT">eine Liste der wesentlichen in den letzten drei
        Jahren erbrachten Dienstleistungen im Hinblick auf Projekte im Bereich
        ePartizipation</cbc:LegalText>
      ....
    </cac:ContractingAuthorityNationalRegulation>
    <cac:EuropeanRegulation>
      <cbc:Name>List of works</cbc:Name>
      <cbc:LegalReference>art. 48 §2 (a)</cbc:LegalReference>
      ....
      <cbc:LegalText languageID="en-GB">list of works carried out over last five years;
        principal deliveries effected and main services provided in the past three years
        in the domain of eParticipation</cbc:LegalText>
      ....
    </cac:EuropeanRegulation>
    <cac:EvidenceProvisionInformation>
      <cbc:NationalEvidenceExistingIndicator>true</cbc:NationalEvidenceExistingIndicator>
      <cac:Attestation>
        <cbc:RequiredDocumentTypeCode>leg</cbc:RequiredDocumentTypeCode>
        <cbc:RequiredDocumentTypeCode>apo</cbc:RequiredDocumentTypeCode>
      </cac:Attestation>
      <cac:Translation>
        <cbc:RequiredDocumentTypeCode>ctrn</cbc:RequiredDocumentTypeCode>
      <cac:Language>
        <cbc:LocaleCode>de-DE</cbc:LocaleCode>
```

```
</cac:Language>
<cac:Language>
  <cbc:LocaleCode>en-GB</cbc:LocaleCode>
</cac:Language>
</cac:Translation>
</cac:EvidenceProvisionInformation>
</cac:RequestedCriterion>
<!-- criterion b) -->
<cac:RequestedCriterion>
  <cbc:UUID schemeURI="http://tools.ietf.org/html/rfc4122" schemeAgencyName="ietf"
    schemeName="UUID Version 4">1230a9999-5e90-3214-713e-aaaed002abcd</cbc:UUID>
  <cac:ContractingAuthorityNationalRegulation>
    <cbc:Name>Technischen Ausrüstung und Maßnahmen zur Qualitätssicherung</cbc:Name>
    ....
    <cbc:LegalReference>§ 75 (7) Z 2 BVergG</cbc:LegalReference>
    <cbc:LegalText languageID="de-AT">eine Beschreibung der technischen Ausrüstung, der
      Maßnahmen des Unternehmers zur Qualitätssicherung</cbc:LegalText>
    ....
  </cac:ContractingAuthorityNationalRegulation>
  <cac:EuropeanRegulation>
    <cbc:Name>Description of technical facilities</cbc:Name>
    <cbc:LegalReference>art. 48 §2 (a)</cbc:LegalReference>
    ....
    <cbc:LegalText languageID="en-GB">description of technical facilities and measures
      used by the supplier or service provider for ensuring quality </cbc:LegalText>
    ....
  </cac:EuropeanRegulation>
  <cac:EvidenceProvisionInformation>
    <cbc:NationalEvidenceExistingIndicator>true</cbc:NationalEvidenceExistingIndicator>
    <cac:Attestation>
      <cbc:RequiredDocumentTypeCode>leg</cbc:RequiredDocumentTypeCode>
      <cbc:RequiredDocumentTypeCode>apo</cbc:RequiredDocumentTypeCode>
    </cac:Attestation>
    <cac:Translation>
      <cbc:RequiredDocumentTypeCode>ctrn</cbc:RequiredDocumentTypeCode>
      <cac:Language>
        <cbc:LocaleCode>de-DE</cbc:LocaleCode>
      </cac:Language>
      <cac:Language>
        <cbc:LocaleCode>en-GB</cbc:LocaleCode>
      </cac:Language>
    </cac:Translation>
  </cac:EvidenceProvisionInformation>
</cac:RequestedCriterion>
</cac:CriteriaList>
```

The second one comes from the "Additional qualification criteria in case of subcontracting" table (that collects one additional criterion for subcontractor); the corresponding XML fragment:



```

<!-- Additional qualification criteria in case of subcontracting -->
<cac:CriteriaList>
  <cbc:UUID schemeURI="http://tools.ietf.org/html/rfc4122" schemeAgencyName="ietf"
    schemeName="UUID Version 4">0390a883-5e90-4014-913e-zxcded459abbv</cbc:UUID>
  <cbc:TendererRoleCode>sc</cbc:TendererRoleCode>
  <cbc:TendererTypeCode>any</cbc:TendererTypeCode>
  <!-- a) -->
  <cac:RequestedCriterion>
    <cbc:UUID schemeURI="http://tools.ietf.org/html/rfc4122" schemeAgencyName="ietf"
      schemeName="UUID Version 4">7609a9999-5e90-3214-713e-ahged002ybcd</cbc:UUID>
    <cac:ContractingAuthorityNationalRegulation>
      <cbc:Name>Angabe von Subaufträgen</cbc:Name>
      <cbc:LegalReference>§ 75 (7) Z 9 BVergG</cbc:LegalReference>
      <cbc:LegalText languageID="de-AT">eine Angabe, welche Teile des Auftrages der
        Unternehmer unter Umständen als Subaufträge zu vergeben
        beabsichtigt</cbc:LegalText>
    </cac:ContractingAuthorityNationalRegulation>
    <cac:EuropeanRegulation>
      <cbc:Name>Proportion to Subcontract</cbc:Name>
      <cbc:LegalReference>art. 48 §2 (i)</cbc:LegalReference>
      ....
      <cbc:LegalText languageID="en-GB">an indication of the proportion of the contract
        which the services provider intends possibly to subcontract </cbc:LegalText>
      ....
    </cac:EuropeanRegulation>
    <cac:EvidenceProvisionInformation>
      <cbc:NationalEvidenceExistingIndicator>true</cbc:NationalEvidenceExistingIndicator>
      ....
    <cac:Attestation>
      <cbc:RequiredDocumentTypeCode>leg</cbc:RequiredDocumentTypeCode>
      <cbc:RequiredDocumentTypeCode>apo</cbc:RequiredDocumentTypeCode>
    </cac:Attestation>
    <cac:Translation>
      <cbc:RequiredDocumentTypeCode>ctrn</cbc:RequiredDocumentTypeCode>
      <cac:Language>
        <cbc:LocaleCode>de-DE</cbc:LocaleCode>
      </cac:Language>
      <cac:Language>
        <cbc:LocaleCode>en-GB</cbc:LocaleCode>
      </cac:Language>
    </cac:Translation>
    </cac:EvidenceProvisionInformation>
  </cac:RequestedCriterion>
</cac:CriteriaList>

```

The last one comes from the "Additional qualification criteria in case of consortia" table (that collects one additional criteria for consortia); the corresponding XML fragment is:





```
<!-- Additional qualification criteria in case of Consortia -->
<cac:CriteriaList>
  <cbc:UUID schemeURI="http://tools.ietf.org/html/rfc4122" schemeAgencyName="ietf"
    schemeName="UUID Version 4">0390a883-5e90-4014-913e-zxcded459abbv</cbc:UUID>
  <cbc:TendererRoleCode>any</cbc:TendererRoleCode>
  <cbc:TendererTypeCode>con</cbc:TendererTypeCode>
  <!-- c) -->
  <cac:RequestedCriterion>
    <cbc:UUID schemeURI="http://tools.ietf.org/html/rfc4122" schemeAgencyName="ietf"
      schemeName="UUID Version 4">7609a9999-5e90-3214-713e-ahged002ybcd</cbc:UUID>
    <cac:ContractingAuthorityNationalRegulation>
      <cbc:Name>Angabe von Subaufträgen</cbc:Name>
      <cbc:LegalReference>§ 75 (7) Z 9 BVergG</cbc:LegalReference>
      ....
      <cbc:LegalText languageID="de-AT">eine Angabe, welche Teile des Auftrages der
        Unternehmer unter Umständen als Subaufträge zu vergeben
        beabsichtigt</cbc:LegalText>
      ....
    </cac:ContractingAuthorityNationalRegulation>
    <cac:EuropeanRegulation>
      <cbc:Name>Proportion to Subcontract</cbc:Name>
      <cbc:LegalReference>art. 48 §2 (i)</cbc:LegalReference>
      ....
      <cbc:LegalText languageID="en-GB">an indication of the proportion of the contract
        which the services provider intends possibly to subcontract </cbc:LegalText>
      ....
    </cac:EuropeanRegulation>
    <cac:EvidenceProvisionInformation>
      <cbc:NationalEvidenceExistingIndicator>true</cbc:NationalEvidenceExistingIndicator>
      ....
      <cac:Attestation>
        <cbc:RequiredDocumentTypeCode>leg</cbc:RequiredDocumentTypeCode>
        <cbc:RequiredDocumentTypeCode>apo</cbc:RequiredDocumentTypeCode>
      </cac:Attestation>
      <cac:Translation>
        <cbc:RequiredDocumentTypeCode>ctrn</cbc:RequiredDocumentTypeCode>
        <cac:Language>
          <cbc:LocaleCode>de-DE</cbc:LocaleCode>
        </cac:Language>
        <cac:Language>
          <cbc:LocaleCode>en-GB</cbc:LocaleCode>
        </cac:Language>
      </cac:Translation>
    </cac:EvidenceProvisionInformation>
  </cac:RequestedCriterion>
  <!-- e) -->
  <cac:RequestedCriterion>
    <cbc:UUID schemeURI="http://tools.ietf.org/html/rfc4122" schemeAgencyName="ietf"
      schemeName="UUID Version 4">7609a9999-5e90-3214-713e-ahged003pocd</cbc:UUID>
    ....
  </cac:RequestedCriterion>
</cac:CriteriaList>
```



```

<cbc:Description>Bidding consortia will be only considered if a declaration/candidate
statement signed by all members will be provided including a list of all members of
the bidding consortium.</cbc:Description>
<cac:ContractingAuthorityNationalRegulation>
  <cbc:Name>....</cbc:Name>
  <cbc:LegalReference>§ 108 (1) Z 1 BVergG</cbc:LegalReference>
  ....
  <cbc:LegalText languageID="de-AT">Name (Firma, Geschäftsbezeichnung) und
  Geschäftssitz des Bieters; bei Arbeitsgemeinschaften die Nennung eines zum
  Abschluss und zur Abwicklung des Vergabeverfahrens und des Vertrages
  bevollmächtigten Vertreters unter Angabe seiner Adresse; schließlich die
  (elektronische) Adresse jener Stelle, die zum Empfang der Post berechtigt
  ist</cbc:LegalText>
  ....
</cac:ContractingAuthorityNationalRegulation>
<cac:EuropeanRegulation>
  <cbc:Name>Authorized representative</cbc:Name>
  <cbc:LegalReference>art. 48 §2 (i)</cbc:LegalReference>
  <cbc:LegalText languageID="en-GB">A group of economic operators may be asked to
  declare an authorized representative of the bidding consortium</cbc:LegalText>
</cac:EuropeanRegulation>
<cac:EvidenceProvisionInformation>
  <cbc:NationalEvidenceExistingIndicator>>true</cbc:NationalEvidenceExistingIndicator>
  ....
  <cac:CandidateStatement>
    <cbc:MinimumSubstitutionLevelCode>sub-selfDec</cbc:MinimumSubstitutionLevelCode>
    <cbc:TemplateDocumentID>7609a9999-5e90-3214-713e-
ahged9988bvcx</cbc:TemplateDocumentID>
  </cac:CandidateStatement>
</cac:EvidenceProvisionInformation>
</cac:RequestedCriterion>
</cac:CriteriaList>

```

The definition of the main data elements used in the XML fragments above are given in *Table 13* and *Table 14*:

Element name	Definition
UUID	The unique identifier for this set of criteria. It MUST have the scheme name "UUID Version 4", scheme agency name "ietf" and scheme uri "http://tools.ietf.org/html/rfc4122".
TendererRoleCode	The specific role of a tenderer for which this list of criteria applies. Values from Peppol Tenderer Role Code code list must be used. In the example: <ul style="list-style-type: none"> <li>- any = any role</li> <li>- sc = subcontractor</li> </ul>
TendererTypeCode	The legal form of the tenderer for which this list of criteria applies. Values from Peppol Tenderer Type Code code list must be used. In the example:



	<ul style="list-style-type: none"> <li>- any = any type</li> <li>- con = consortium</li> </ul>
RequestedCriterion	Information about a requested criterion. More than one criterion can be present.
RequestedCriterion. UUID	The unique identifier for this criterion. It MUST have the scheme name "UUID Version 4", scheme agency name "ietf" and scheme uri "http://tools.ietf.org/html/rfc4122".
RequestedCriterion. Description	Free text to provide a description about this criterion and related requirements (for example, requirements that cannot be specified in the Call for Tender description because they apply to this criterion only) .
RequestedCriterion. ContractingAuthorityNationalRegulation	Information (name, legal reference, legal text, ...) about the regulation of the Contracting Authority.
RequestedCriterion. EuropeanRegulation	Information (name, legal reference, legal text, ...) about the legal regulation on EU level.
RequestedCriterion. EvidenceProvisionInformation	Information (required attestation, translation, candidate statement, ... ) about the provision of evidences.

Table 13 Criteria List XML data elements

Element name	Definition
National Evidence Existing Indicator	This value = "true" indicates that the CA, within its legal domain, can directly retrieve a national evidence/attestation; otherwise this value must be "false".
Attestation	If a copy of the evidence issued by a competent issuing body is required, then further information about the provision of this can be specified here.
Attestation. Required Document Type Code	The type of document (expressed as code) is required to be provided. More than one document type can be specified. Values from Peppol Document Type Code code list must be used. In the example: <ul style="list-style-type: none"> <li>- leg = Legalisation</li> <li>- apo = Apostille</li> </ul> according to the Call for Tender requirements.
Attestation. Translation	If a translation of the attestation is requested, then further information about the provision of this can be specified here. They are: accepted document type (certified or notarized translation) and languages. In the example, values from following Peppol code list have been used. Document Type Code code list : <ul style="list-style-type: none"> <li>- ctrn = certified translation</li> </ul> Locale Code code list: <ul style="list-style-type: none"> <li>- de-DE = German (Germany)</li> <li>- en-GB = English (United Kingdom)</li> </ul> according to the Call for Tender requirements.
Attestation. Candidate Statement	Information about a candidate statement. They are: the type (expressed as code) of candidate statement is required as the minimal substitute, in case cascading rules are applied, and references to a template that should be used to provide this candidate statement. Values from Peppol Substitute Evidence Code code list has to be used. In



	<p>the example:</p> <ul style="list-style-type: none"> <li>- sub-selfDec = Self-Declaration</li> </ul>
--	--

Table 14 Evidence Provision Information XML data elements

If the Criteria Template provides information about candidate statements for a requested criterion, it can specify a template document too. The corresponding XML fragment is (Table 15):

```

<cac:TemplateDocument>
  <cbc:UUID schemeURI="http://tools.ietf.org/html/rfc4122" schemeAgencyName="ietf"
    schemeName="UUID Version 4">7609a9999-5e90-3214-713e-ahged9988bvcx</cbc:UUID>
  <cbc:ProvesCriterionID>7609a9999-5e90-3214-713e-ahged003pocd</cbc:ProvesCriterionID>
  <cbc:Title>Template Document for Self-Declaration</cbc:Title>
  ....
  <cac:DocumentReference>
    <cbc:ID>TD001</cbc:ID>
    ....
    <cac:Attachment>
      <cac:ExternalReference>
        ....
        <cbc:URI>http://www.templatedocument.org</cbc:URI>
        ....
      </cac:ExternalReference>
    </cac:Attachment>
  </cac:DocumentReference>
</cac:TemplateDocument>

```

Element name	Definition
UUID	The unique identifier for the template document. It MUST have the scheme name "UUID Version 4", scheme agency name "ietf" and scheme uri "http://tools.ietf.org/html/rfc4122".
ProvesCriterionID	Reference to one or more criteria that can be proven by this template as well.
Title	The document template title.
DocumentReference	Information to identify and access to the template document.

Table 15 Template document Information XML data elements



## 6.2 Technical validation artefacts

Criteria Template XML document conforms to this PEPPOL BIS if:

- ▶ it is valid against the Criteria Template XML Schema (part of VCD 2.0 XML Schemas)  
*and*
- ▶ it is valid against all validation rules provided in this BIS.

In order to perform these validations following artefact are available:

- ▶ VCD 2.0 XML Schemas;
- ▶ VCD 2.0 Schematrons (including schematron artefacts for checking validation rules on Criteria Template XML documents).
- ▶

Artefact Type	File name	Location
<i>XML Schema</i>	WP2-CriteriaTemplate-2.xsd	<b>ICT PreAward VCD Components - VCD Schemas_V200</b> <a href="http://bscw.uni-koblenz.de/bscw/bscw.cgi/d2196510/ICT%20PreAward%20VCD%20Components%20-%20VCD%20Schemas_V200.zip">http://bscw.uni-koblenz.de/bscw/bscw.cgi/d2196510/ICT%20PreAward%20VCD%20Components%20-%20VCD%20Schemas_V200.zip</a>
<i>Schematron</i>	WP2-VCD-UBL-CT02.sch	<b>ICT PreAward VCD Components - VCD Schematrons_V200</b> <a href="http://bscw.uni-koblenz.de/bscw/bscw.cgi/d2193175/ICT%20PreAward%20VCD%20Components%20-%20VCD%20Schematrons_V200.zip">http://bscw.uni-koblenz.de/bscw/bscw.cgi/d2193175/ICT%20PreAward%20VCD%20Components%20-%20VCD%20Schematrons_V200.zip</a>

Table 16 Technical validation artefacts references

## 7 Technical Interaction Interoperability – eSignature Validation

PEPPOL doesn't require the application of digital signatures on the PEPPOL documents, neither this is in the scope of this PEPPOL BIS.

Here only a recommendation is given: use what is already existing in PEPPOL if documents must be signed.

What is available on signature:

- ▶ PEPPOL eSignature Validation Infrastructure [PEPPOL\_Sign]
- ▶ the use of the Signature inside XML document, as defined by UBL 2.0.

## 8 Technical Interaction Interoperability - Transport

PEPPOL has defined a transport infrastructure based on a set of standardised communication protocols, known as BusDox (Business Document Exchange), which ensures the interoperable, secure and reliable exchange of electronic documents between Economic Operators and Contracting Authorities within the EU.

PEPPOL requires all post-award business documents to be transported using the PEPPOL Transport Infrastructure, while in the pre-award tendering phase Economic Operators and Contracting Authorities can use their own methods of communication.

If they want to use the PEPPOL Transport Infrastructure to exchange pre-awarding documents complying with this PEPPOL BIS, they must fulfil the approach defined in chapter 8.1 of this PEPPOL BIS.

### 8.1 Sending Criteria Template through PEPPOL Transport Infrastructure

All information about PEPPOL Transport Infrastructure and its use can be found on [PEPPOL\_Transp].

The present paragraph defines the further requirements that are necessary to exchange through the PEPPOL Transport Infrastructure the electronic qualification documents defined according with this PEPPOL BIS.

Currently the PEPPOL Transport Infrastructure supports the exchange of messages as transactions having one XML document as payload.

On the other side, as stated in this PEPPOL BIS, the Criteria Template can enclose one or more template document template usually used for self-declarations.

In order to solve the problem, this PEPPOL BIS states that all template document instances must be embedded in the Criteria Template as "Base64 encoded data".

## A. Transactions data models

### i. Criteria Template

. The **Fehler! Verweisquelle konnte nicht gefunden werden.** shows the elements in a Criteria Template version 2.0. Columns description:

- ▶ First two columns show the Cardinality of the element.
- ▶ The element name (element preceded with a "+" sign is a class, the rest are simple elements. Element followed by a "⦿" sign an element having the same structure of one of its ancestor; its structure is not showed, take the ancestor's structure as reference).
- ▶ the third column states business requirements, business rules or code list that may apply to the field;
- ▶ the last column states if the element is part of the core data model or not (the core data model is the set of elements that the receiver must be able to process). Elements in core data model are marked with "x".

NOTE: the order of elements when used in Criteria Template must follow the order stated in the below list.

Min	Max	Criteria Template elements	Business Requirements/ Rules	Core
1	1	Criteria Template. UUID. Identifier	Org01 VCD-CT02-R009	x
0	1	Criteria Template. Ontology Version Identifier. Identifier		x
1	1	Criteria Template. Compilation Date. Date	Org01	x
1	1	Criteria Template. Compilation Time. Time	Org01	x
0	1	+ <i>Criteria Template. Call For Tender</i>	Org05	x
0	1	Call For Tender. Identifier		x
0	1	Call For Tender. Name	Org06 VCD-CT02-R031	x
0	1	Call For Tender. Description. Text		x
1	1	+ <i>Criteria Template. Contracting Authority Party. Party</i>	Org02	x
0	1	Party. Endpoint Identifier. Identifier	Org07	
0	n	+ <i>Party. Party Identification</i>	Org07	x
1	1	Party Identification. Identifier		x
0	n	+ <i>Party. Party Name</i>	Org07	x
1	1	Party Name. Name		x

0	1		+ <i>Party. Postal Address. Address</i>	Org08	X
0	1		Address. Address Type Code. Code	VCD-02-R019	X
0	1		Address. Room. Text		X
0	1		Address. Street Name. Name		X
0	1		Address. Building Name. Name		X
0	1		Address. Building Number. Text		X
0	1		Address. City Name. Name		X
0	1		Address. Postal Zone. Text		X
0	1		Address. Country Subentity. Text		X
0	1		Address. Country Subentity Code. Code		X
0	n		+ <i>Address. Address Line</i>		X
1	1		Address Line. Line. Text		X
0	1		+ <i>Address. Country</i>		X
0	1		Country. Identification Code. Code		X
0	1		Country. Name		X
0	1		+ <i>Party. Contact</i>	Org08	X
1	1		Contact. Name		X
0	1		Contact. Telephone. Text		X
0	1		Contact. Telefax. Text		X
0	1		Contact. Electronic Mail. Text		X
0	n		Contact. Note. Text		X
0	n		+ <i>Party. Person</i>		X
0	1		Person. First Name. Name		X
0	1		Person. Family Name. Name		X
0	1		Person. Middle Name. Name		X
0	1		Person. Job Title. Text		X
0	1		+ <i>Criteria Template. Issuing Service. Issuing Service</i>		X
1	1		Issuing Service. Endpoint Identifier. Identifier		X
1	1		Issuing Service. Name. Text		X
1	1		+ <i>Issuing Service. Providing Party. Party</i>		X




0	1		Party. Endpoint Identifier. Identifier		
0	n		+ Party. Party Identification		X
1	1		Party Identification. Identifier		X
0	n		+ Party. Party Name		X
1	1		Party Name. Name		X
0	1		+ Party. Postal Address. Address		X
0	1		Address. Address Type Code. Code	VCD-02-R019	X
0	1		Address. Room. Text		X
0	1		Address. Street Name. Name		X
0	1		Address. Building Name. Name		X
0	1		Address. Building Number. Text		X
0	1		Address. City Name. Name		X
0	1		Address. Postal Zone. Text		X
0	1		Address. Country Subentity. Text		X
0	1		Address. Country Subentity Code. Code		X
0	n		+ Address. Address Line		X
1	1		Address Line. Line. Text		X
0	1		+ Address. Country		X
0	1		Country. Identification Code. Code		X
0	1		Country. Name		X
0	1		+ Party. Contact		X
1	1		Contact. Name		X
0	1		Contact. Telephone. Text		X
0	1		Contact. Telefax. Text		X
0	1		Contact. Electronic Mail. Text	VCD-CT02-R008	X
0	n		Contact. Note. Text		X
0	n		+ Party. Person		X
0	1		Person. First Name. Name		X
0	1		Person. Family Name. Name		X
0	1		Person. Middle Name. Name		

0	1			Person. Job Title. Text		
0	1			+ Issuing Service. Policy Document. Document		X
1	1			Document. Document Group Identifier. Identifier		X
1	1			Document. Title. Text		X
1	n			+ Document. Document Reference		X
1	1			Document Reference. Identifier		X
0	1			Document Reference. Issue Date. Date		X
0	1			Document Reference. Issue Time. Time		X
0	1			Document Reference. Document Type Code. Code		X
0	1			Document Reference. Document Type. Text		X
0	1			+ Document Reference. Attachment		X
0	1			Attachment. Embedded Document. Binary Object		
0	1			+ Attachment. External Reference		X
0	1			External Reference. URI. Identifier		X
0	1			External Reference. Document Hash. Text		X
0	n			External Reference. Hash Algorithm Method. Text		X
0	1			External Reference. Expiry Date. Date		X
0	1			External Reference. Expiry Time. Time		X
0	1			External Reference. Mime Code. Code		
0	1			External Reference. Format Code. Code		
0	1			External Reference. Encoding Code. Code		
0	1			External Reference. Character Set Code. Code		
0	1			External Reference. File Name. Name		X
0	n			External Reference. Description. Text		X
0	n			+ Document Reference. Result Of Verification		X
0	1			Result Of Verification. Validator Identifier. Identifier		X
1	1			Result Of Verification. Validate Result Code. Code		X
0	1			Result Of Verification. Validation Date. Date		X
0	1			Result Of Verification. Validation Time. Time		X
0	1			Result Of Verification. Validate Process. Text		X

0	1					Result Of Verification. Validate Tool. Text			X
0	1					Result Of Verification. Validate Tool Version. Text			X
0	1					+ <i>Result Of Verification. Signatory Party. Party</i>			X
0	1					Party. Endpoint Identifier. Identifier			X
0	n					+ <i>Party. Party Identification</i>			X
1	1					Party Identification. Identifier			X
0	n					+ <i>Party. Party Name</i>			X
1	1					Party Name. Name			X
0	1					+ <i>Party. Postal Address. Address</i>			
0	1					Address. Address Type Code. Code	VCD-02-R019		
0	1					Address. Room. Text			
0	1					Address. Street Name. Name			
0	1					Address. Building Name. Name			
0	1					Address. Building Number. Text			
0	1					Address. City Name. Name			
0	1					Address. Postal Zone. Text			
0	1					Address. Country Subentity. Text			
0	1					Address. Country Subentity Code. Code			
0	n					+ <i>Address. Address Line</i>			
1	1					Address Line. Line. Text			
0	1					+ <i>Address. Country</i>			
0	1					Country. Identification Code. Code			
0	1					Country. Name			
0	1					+ <i>Party. Contact</i>			X
1	1					Contact. Name			X
0	1					Contact. Telephone. Text			X
0	1					Contact. Telefax. Text			X
0	1					Contact. Electronic Mail. Text	VCD-CT02-R008		X
0	n					Contact. Note. Text			X
0	n					+ <i>Party. Person</i>			X

0	1					Person. First Name. Name			X
0	1					Person. Family Name. Name			X
0	1					Person. Middle Name. Name			
0	1					Person. Job Title. Text			
0	1					+ Document Reference. Issuer Party. Party			X
0	1					Party. Endpoint Identifier. Identifier			
0	n					+ Party. Party Identification			X
1	1					Party Identification. Identifier			X
0	n					+ Party. Party Name			X
1	1					Party Name. Name			X
0	1					+ Party. Postal Address. Address			
0	1					Address. Address Type Code. Code	VCD-02-R019		
0	1					Address. Room. Text			
0	1					Address. Street Name. Name			
0	1					Address. Building Name. Name			
0	1					Address. Building Number. Text			
0	1					Address. City Name. Name			
0	1					Address. Postal Zone. Text			
0	1					Address. Country Subentity. Text			
0	1					Address. Country Subentity Code. Code			
0	n					+ Address. Address Line			
1	1					Address Line. Line. Text			
0	1					+ Address. Country			
0	1					Country. Identification Code. Code			
0	1					Country. Name			
0	1					+ Party. Contact			
1	1					Contact. Name			
0	1					Contact. Telephone. Text			
0	1					Contact. Telefax. Text			
0	1					Contact. Electronic Mail. Text	VCD-CT02-R008		

0	n				Contact. Note. Text		
0	n				+ Party. Person		
0	1				Person. First Name. Name		
0	1				Person. Family Name. Name		
0	1				Person. Middle Name. Name		
0	1				Person. Job Title. Text		
0	1				+ Document Reference. Issuing Service 		
0	n				+ Document Reference. Language		x
0	1				Language. Name		x
0	1				Language. Locale Code. Code	VCD-02-R022	x
1	1				+ Criteria Template. Legal Domain	Org04	x
0	1				Legal Domain. Ontology URI. Identifier		x
1	1				Legal Domain. Domain Code. Code	VCD-02-R012	x
1	1				Legal Domain. Domain. Text		x
1	n				+ Criteria Template. Criteria List		x
1	1				Criteria List. UUID. Identifier	VCD-CT02-R009	x
1	1				Criteria List. Tenderer Role Code. Code	Org12 VCD-02-R039	x
1	1				Criteria List. Tenderer Type Code.Code	Org12 VCD-02-R040	x
1	n				+ Criteria List. Requested Criterion	Org09, Org10, Org11	x
1	1				Requested Criterion. UUID. Identifier	VCD-CT02-R009	x
0	n				Requested Criterion. Procurement Lot Name. Name	Org14	x
0	1				Requested Criterion. Description. Text	Org15	x
0	1				+ Requested Criterion. Contracting Authority National Regulation. Regulation		x
1	n				Regulation. Name. Text		x
0	1				Regulation. Legal Reference. Text		x
0	1				Regulation. URI. Identifier		x
0	n				Regulation. Legal Text. Text	VCD-CT02-R024	x
0	n				Regulation. Further Information. Text	VCD-CT02-R027	x

0	1			Regulation. Requirement Description.Text		x
0	1			Regulation. Minimum Substitute Evidence Level. Code	VCD-02-R042	x
0	1			Regulation. Substitute Evidence Description.Text		x
1	1			<i>+ Requested Criterion. European Regulation. Regulation</i>	Org13	x
1	n			Regulation. Name. Text		x
0	1			Regulation. Legal Reference. Text		x
0	1			Regulation. URI. Identifier		x
0	n			Regulation. Legal Text. Text	VCD-CT02-R024	x
0	n			Regulation. Further Information. Text	VCD-CT02-R027	x
0	1			Regulation. Requirement Description.Text		x
0	1			Regulation. Minimum Substitute Evidence Level. Code	VCD-02-R042	x
0	1			Regulation. Substitute Evidence Description.Text		x
0	1			<i>+ Requested Criterion. Evidence Provision Information</i>	VCD-CT02-R032 VCD-CT02-R033	x
1	1			Evidence Provision Information. National Evidence Existing Indicator. Indicator		x
0	n			Evidence Provision Information. Pre Qualification Identifier. Identifier	VCD-CT02-R034	x
0	1			<i>+ Evidence Provision Information. Attestation</i>	Org17	x
1	n			Attestation. Required Document Type Code. Code	Org18 VCD-02-R041	x
0	1			<i>+ Evidence Provision Information. Translation</i>	Org16	x
1	1			Translation. Required Document Type Code. Code	VCD-02-R041	x
1	n			<i>+ Translation. Language</i>		x
0	1			Language. Name		x
0	1			Language. Locale Code. Code	VCD-02-R022	x
0	1			<i>+ Evidence Provision Information. Candidate Statement</i>	Org19 VCD-CT02-R035	x
1	1			Candidate Statement. Minimum Substitution Level Code. Code	Org20 VCD-02-R042	x
0	1			Candidate Statement. Template Document Identifier. Identifier		x
0	n			<i>+ Criteria Template. Pre Qualification Body</i>	Org03	x
0	1			Pre Qualification Body. UUID. Identifier	VCD-CT02-R009	x
0	1			Pre Qualification Body. Name		x


0	1		Pre Qualification Body. Description. Text		X
1	1		Pre Qualification Body. National Relevance Indicator. Indicator		X
0	n		+ <i>Criteria Template. Template Document</i>	VCD-CT02-R036	X
1	1		Template Document. UUID. Identifier	VCD-CT02-R009	X
0	n		Template Document. Proves Criterion. Identifier	Org21 VCD-CT02-R037	X
1	1		Template Document. Title. Text		X
0	1		Template Document. Additional Information. Text		X
1	1		+ <i>Template Document. Document Reference</i>		X
1	1		Document Reference. Identifier		X
0	1		Document Reference. Issue Date. Date		X
0	1		Document Reference. Issue Time. Time		X
0	1		Document Reference. Document Type Code. Code		X
0	1		Document Reference. Document Type. Text		X
0	1		+ <i>Document Reference. Attachment</i>		X
0	1		Attachment. Embedded Document. Binary Object		
0	1		+ <i>Attachment. External Reference</i>		X
0	1		External Reference. URI. Identifier		X
0	1		External Reference. Document Hash. Text		X
0	n		External Reference. Hash Algorithm Method. Text		X
0	1		External Reference. Expiry Date. Date		X
0	1		External Reference. Expiry Time. Time		X
0	1		External Reference. Mime Code. Code		
0	1		External Reference. Format Code. Code		
0	1		External Reference. Encoding Code. Code		
0	1		External Reference. Character Set Code. Code		
0	1		External Reference. File Name. Name		X
0	n		External Reference. Description. Text		X
0	n		+ <i>Document Reference. Result Of Verification</i>		X
0	1		Result Of Verification. Validator Identifier. Identifier		X
1	1		Result Of Verification. Validate Result Code. Code		X

0	1				Result Of Verification. Validation Date. Date		X
0	1				Result Of Verification. Validation Time. Time		X
0	1				Result Of Verification. Validate Process. Text		X
0	1				Result Of Verification. Validate Tool. Text		X
0	1				Result Of Verification. Validate Tool Version. Text		X
0	1				<i>+ Result Of Verification. Signatory Party. Party</i>		X
0	1				Party. Endpoint Identifier. Identifier		
0	n				<i>+ Party. Party Identification</i>		X
1	1				Party Identification. Identifier		X
0	n				<i>+ Party. Party Name</i>		X
1	1				Party Name. Name		X
0	1				<i>+ Party. Postal Address. Address</i>		
0	1				Address. Address Type Code. Code	VCD-02-R019	
0	1				Address. Room. Text		
0	1				Address. Street Name. Name		
0	1				Address. Building Name. Name		
0	1				Address. Building Number. Text		
0	1				Address. City Name. Name		
0	1				Address. Postal Zone. Text		
0	1				Address. Country Subentity. Text		
0	1				Address. Country Subentity Code. Code		
0	n				<i>+ Address. Address Line</i>		
1	1				Address Line. Line. Text		
0	1				<i>+ Address. Country</i>		
0	1				Country. Identification Code. Code		
0	1				Country. Name		
0	1				<i>+ Party. Contact</i>		X
1	1				Contact. Name		X
0	1				Contact. Telephone. Text		X
0	1				Contact. Telefax. Text		X



0	1				Contact. Electronic Mail. Text	VCD-CT02-R008	X
0	n				Contact. Note. Text		X
0	n				+ Party. Person		X
0	1				Person. First Name. Name		X
0	1				Person. Family Name. Name		X
0	1				Person. Middle Name. Name		
0	1				Person. Job Title. Text		
0	1				+ Document Reference. Issuer Party. Party		X
0	1				Party. Endpoint Identifier. Identifier		
0	n				+ Party. Party Identification		X
1	1				Party Identification. Identifier		X
0	n				+ Party. Party Name		X
1	1				Party Name. Name		X
0	1				+ Party. Postal Address. Address		X
0	1				Address. Address Type Code. Code	VCD-02-R019	X
0	1				Address. Room. Text		X
0	1				Address. Street Name. Name		X
0	1				Address. Building Name. Name		X
0	1				Address. Building Number. Text		X
0	1				Address. City Name. Name		X
0	1				Address. Postal Zone. Text		X
0	1				Address. Country Subentity. Text		X
0	1				Address. Country Subentity Code. Code		X
0	n				+ Address. Address Line		X
1	1				Address Line. Line. Text		X
0	1				+ Address. Country		X
0	1				Country. Identification Code. Code		X
0	1				Country. Name		X
0	1				+ Party. Contact		X
1	1				Contact. Name		X

0	1				Contact. Telephone. Text		X
0	1				Contact. Telefax. Text		X
0	1				Contact. Electronic Mail. Text	VCD-CT02-R008	X
0	n				Contact. Note. Text		X
0	n				+ <i>Party. Person</i>		X
0	1				Person. First Name. Name		X
0	1				Person. Family Name. Name		X
0	1				Person. Middle Name. Name		
0	1				Person. Job Title. Text		
0	1				+ <i>Document Reference. Issuing Service</i>		
1	1				Issuing Service. Endpoint Identifier.Identifier		
1	1				Issuing Service. Name. Text		
1	1				+ <i>Issuing Service. Providing Party.Party</i>		
0	1				Party. Endpoint Identifier.Identifier		
0	n				+ <i>Party. Party Identification</i>		
1	1				Party Identification. Identifier		
0	n				+ <i>Party. Party Name</i>		
1	1				Party Name. Name		
0	1				+ <i>Party. Postal Address. Address</i>		
0	1				Address. Address Type Code. Code	VCD-02-R019	
0	1				Address. Room. Text		
0	1				Address. Street Name. Name		
0	1				Address. Building Name. Name		
0	1				Address. Building Number. Text		
0	1				Address. City Name. Name		
0	1				Address. Postal_ Zone. Text		
0	1				Address. Country Subentity. Text		
0	1				Address. Country Subentity Code.Code		
0	n				+ <i>Address. Address Line</i>		
1	1				Address Line. Line. Text		

0	1								+ Address. Country		
0	1								Country. Identification Code.Code		
0	1								Country. Name		
0	1								+ Party. Contact		
1	1								Contact. Name		
0	1								Contact. Telephone. Text		
0	1								Contact. Telefax. Text		
0	1								Contact. Electronic Mail. Text	VCD-CT02-R008	
0	n								Contact. Note. Text		
0	n								+ Party. Person		
0	1								Person. First Name. Name		
0	1								Person. Family Name. Name		
0	1								Person. Middle Name. Name		
0	1								Person. Job Title. Text		
0	1								+ Issuing Service. Policy Document.Document		
1	1								Document. Document Group Identifier.Identifier		
1	1								Document. Title. Text		
1	n								+ Document. Document Reference 		
0	n								+ Document Reference. Language		
0	1								Language. Name		
0	1								Language. Locale Code. Code	VCD-02-R022	
0	1								+ Criteria Template. Signature	Org22	X
1	1								Signature. Identifier		X
0	1								Signature. Note. Text		X
0	1								Signature. Canonicalization Method. Text		X
0	1								Signature. Signature Method. Text		X
1	1								+ Signature. Signatory Party. Party		X
0	1								Party. Endpoint Identifier. Identifier		X
0	n								+ Party. Party Identification		X

1	1			Party Identification. Identifier		X
0	n			+ Party. Party Name		X
1	1			Party Name. Name		X
0	1			+ Party. Postal Address. Address		
0	1			Address. Address Type Code. Code	VCD-02-R019	
0	1			Address. Room. Text		
0	1			Address. Street Name. Name		
0	1			Address. Building Name. Name		
0	1			Address. Building Number. Text		
0	1			Address. City Name. Name		
0	1			Address. Postal Zone. Text		
0	1			Address. Country Subentity. Text		
0	1			Address. Country Subentity Code. Code		
0	n			+ Address. Address Line		
1	1			Address Line. Line. Text		
0	1			+ Address. Country		
0	1			Country. Identification Code. Code		
0	1			Country. Name		
0	1			+ Party. Contact		X
1	1			Contact. Name		X
0	1			Contact. Telephone. Text		X
0	1			Contact. Telefax. Text		X
0	1			Contact. Electronic Mail. Text	VCD-CT02-R008	X
0	n			Contact. Note. Text		X
0	n			+ Party. Person		X
0	1			Person. First Name. Name		X
0	1			Person. Family Name. Name		X
0	1			Person. Middle Name. Name		
0	1			Person. Job Title. Text		
0	1			+ Signature. Digital Signature Attachment. Attachment		X

0	1			Attachment. Embedded Document. Binary Object		
0	1			+ <i>Attachment. External Reference</i>		X
0	1			External Reference. URI. Identifier		X
0	1			External Reference. Document Hash. Text		X
0	n			External Reference. Hash Algorithm Method. Text		X
0	1			External Reference. Expiry Date. Date		X
0	1			External Reference. Expiry Time. Time		X
0	1			External Reference. Mime Code. Code		
0	1			External Reference. Format Code. Code		
0	1			External Reference. Encoding Code. Code		
0	1			External Reference. Character Set Code. Code		
0	1			External Reference. File Name. Name		X
0	n			External Reference. Description. Text		X
0	1			+ <i>Signature. Original Document Reference. Document Reference</i>		
1	1			Document Reference. Identifier		
0	1			Document Reference. Issue Date. Date		
0	1			Document Reference. Issue Time. Time		
0	1			Document Reference. Document Type Code. Code		
0	1			Document Reference. Document Type. Text		
0	1			+ <i>Document Reference. Attachment</i>		
0	1			Attachment. Embedded Document. Binary Object		
0	1			+ <i>Attachment. External Reference</i>		
0	1			External Reference. URI. Identifier		
0	1			External Reference. Document Hash. Text		
0	n			External Reference. Hash Algorithm Method. Text		
0	1			External Reference. Expiry Date. Date		
0	1			External Reference. Expiry Time. Time		
0	1			External Reference. Mime Code. Code		
0	1			External Reference. Format Code. Code		
0	1			External Reference. Encoding Code. Code		

0	1				External Reference. Character Set Code. Code		
0	1				External Reference. File Name. Name		
0	n				External Reference. Description. Text		
0	n				<i>+ Document Reference. Result Of Verification</i>	Org23	
0	1				Result Of Verification. Validator Identifier. Identifier		
1	1				Result Of Verification. Validate Result Code. Code		
0	1				Result Of Verification. Validation Date. Date		
0	1				Result Of Verification. Validation Time. Time		
0	1				Result Of Verification. Validate Process. Text		
0	1				Result Of Verification. Validate Tool. Text		
0	1				Result Of Verification. Validate Tool Version. Text		
0	1				<i>+ Result Of Verification. Signatory Party. Party</i>		
0	1				Party. Endpoint Identifier. Identifier		
0	n				<i>+ Party. Party Identification</i>		
1	1				Party Identification. Identifier		
0	n				<i>+ Party. Party Name</i>		
1	1				Party Name. Name		
0	1				<i>+ Party. Postal Address. Address</i>		
0	1				Address. Address Type Code. Code	VCD-02-R019	
0	1				Address. Room. Text		
0	1				Address. Street Name. Name		
0	1				Address. Building Name. Name		
0	1				Address. Building Number. Text		
0	1				Address. City Name. Name		
0	1				Address. Postal_ Zone. Text		
0	1				Address. Country Subentity. Text		
0	1				Address. Country Subentity Code. Code		
0	n				<i>+ Address. Address Line</i>		
1	1				Address Line. Line. Text		
0	1				<i>+ Address. Country</i>		

0	1						Country. Identification Code. Code		
0	1						Country. Name		
0	1						<i>+ Party. Contact</i>		
1	1						Contact. Name		
0	1						Contact. Telephone. Text		
0	1						Contact. Telefax. Text		
0	1						Contact. Electronic Mail. Text	VCD-CT02-R008	
0	n						Contact. Note. Text		
0	n						<i>+ Party. Person</i>		
0	1						Person. First Name. Name		
0	1						Person. Family Name. Name		
0	1						Person. Middle Name. Name		
0	1						Person. Job Title. Text		
0	1						<i>+ Document Reference. Issuer Party. Party</i>		
0	1						Party. Endpoint Identifier. Identifier		
0	n						<i>+ Party. Party Identification</i>		
1	1						Party Identification. Identifier		
0	n						<i>+ Party. Party Name</i>		
1	1						Party Name. Name		
0	1						<i>+ Party. Postal Address. Address</i>		
0	1						Address. Address Type Code. Code	VCD-02-R019	
0	1						Address. Room. Text		
0	1						Address. Street Name. Name		
0	1						Address. Building Name. Name		
0	1						Address. Building Number. Text		
0	1						Address. City Name. Name		
0	1						Address. Postal Zone. Text		
0	1						Address. Country Subentity. Text		
0	1						Address. Country Subentity Code. Code		
0	n						<i>+ Address. Address Line</i>		

1	1					Address Line. Line. Text		
0	1					+ Address. Country		
0	1					Country. Identification Code. Code		
0	1					Country. Name		
0	1					+ Party. Contact		
1	1					Contact. Name		
0	1					Contact. Telephone. Text		
0	1					Contact. Telefax. Text		
0	1					Contact. Electronic Mail. Text	VCD-CT02-R008	
0	n					Contact. Note. Text		
0	n					+ Party. Person		
0	1					Person. First Name. Name		
0	1					Person. Family Name. Name		
0	1					Person. Middle Name. Name		
0	1					Person. Job Title. Text		
0	1					+ Document Reference. Issuing Service		
1	1					Issuing Service. Endpoint Identifier.Identifier		
1	1					Issuing Service. Name. Text		
1	1					+ Issuing Service. Providing Party.Party		
0	1					Party. Endpoint Identifier.Identifier		
0	n					+ Party. Party Identification		
1	1					Party Identification. Identifier		
0	n					+ Party. Party Name		
1	1					Party Name. Name		
0	1					+ Party. Postal Address. Address		
0	1					Address. Address Type Code. Code	VCD-02-R019	
0	1					Address. Room. Text		
0	1					Address. Street Name. Name		
0	1					Address. Building Name. Name		
0	1					Address. Building Number. Text		



0	1					Address. City Name. Name		
0	1					Address. Postal Zone. Text		
0	1					Address. Country Subentity. Text		
0	1					Address. Country Subentity Code.Code		
0	n					<b>+ Address. Address Line</b>		
1	1					Address Line. Line. Text		
0	1					<b>+ Address. Country</b>		
0	1					Country. Identification Code.Code		
0	1					Country. Name		
0	1					<b>+ Party. Contact</b>		
1	1					Contact. Name		
0	1					Contact. Telephone. Text		
0	1					Contact. Telefax. Text		
0	1					Contact. Electronic Mail. Text	VCD-CT02-R008	
0	n					Contact. Note. Text		
0	n					<b>+ Party. Person</b>		
0	1					Person. First Name. Name		
0	1					Person. Family Name. Name		
0	1					Person. Middle Name. Name		
0	1					Person. Job Title. Text		
0	1					<b>+ Issuing Service. Policy Document.Document</b>		
1	1					Document. Document Group Identifier.Identifier		
1	1					Document. Title. Text		
1	n					<b>+ Document. Document Reference 6</b>		
0	n					<b>+ Document Reference. Language</b>		
0	1					Language. Name		
0	1					Language. Locale Code. Code	VCD-02-R022	